

À des fins de recherche uniquement

Anticorps Polyclonal de lapin anti-RFC5



Numéro de catalogue: 10385-1-AP

2 Publications

Informations de base

Numéro de catalogue:
10385-1-AP

Taille:
150ul, Concentration: 350 µg/ml by Nanodrop and 247 µg/ml by Bradford method using BSA as the standard;

Hôte:
Lapin

Isotype:
IgG

Immunogen Catalog Number:
AG0584

Numéro d'acquisition GenBank:
BC001866

Identification du gène (NCBI):
5985

Nom complet:
replication factor C (activator 1) 5,
36.5kDa

MW calculé
36 aa, 5 kDa

Méthode de purification:
Purification par affinité contre
l'antigène

Dilutions recommandées:
WB 1:200-1:1000
IP 0.5-4.0 ug for IP and 1:200-1:1000
for WB

Applications

Applications testées:
IP, WB, ELISA

Demandes citées:
WB

Spécificité de l'espèce:
Humain, rat, souris

Espèces citées:
Humain

Contrôles positifs:

WB : cellules HeLa,

IP : cellules HeLa,

Informations générales

The elongation of primed DNA templates by DNA polymerase delta and DNA polymerase epsilon requires the accessory proteins proliferating cell nuclear antigen (PCNA) and replication factor C (RFC). RFC, also named activator 1, is a protein complex consisting of five distinct subunits of 140, 40, 38, 37, and 36 kD. Replication factor C5 (RFC5, synonyms: RFC36, MGC1155) is the 36 kD subunit. This subunit can interact with the C-terminal region of PCNA and form a core complex with the 38 and 40 kDa subunits. The core complex possesses DNA-dependent ATPase activity, which was found to be stimulated by PCNA in an in vitro system.

Publications notables

Autrice	Pubmed ID	Journal	Application
Yi-Chang Wang	36961817	Cell Rep	WB
Yi-Chang Wang	36778247	bioRxiv	WB

Stockage

Stockage:

Stocker à -20°C. Stable pendant un an après l'expédition.

Tampon de stockage:

PBS avec azoture de sodium à 0,02 % et glycérol à 50 % pH 7,3

L'aliquotage n'est pas nécessaire pour le stockage à -20C

*** Les 20ul contiennent 0,1% de BSA.

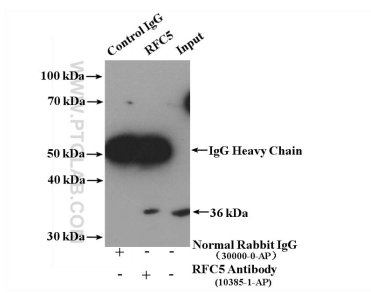
For technical support and original validation data for this product please contact:

T: 1 (888) 4PTGLAB (1-888-478-4522) (toll free
in USA), or 1(312) 455-8498 (outside USA)

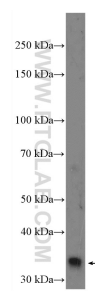
E: proteintech@ptglab.com
W: ptglab.com

This product is exclusively available under Proteintech Group brand and is not available to purchase from any other manufacturer.

Données de validation sélectionnées



IP result of anti-RFC5 (IP:10385-1-AP, 4ug; Detection:10385-1-AP 1:300) with HeLa cells lysate 3000 ug.



HeLa cells were subjected to SDS PAGE followed by western blot with 10385-1-AP (RFC5 Antibody) at dilution of 1:300 incubated at room temperature for 1.5 hours.