

À des fins de recherche uniquement

# Anticorps Polyclonal de lapin anti-COMMD5



Numéro de catalogue: 10393-1-AP

Phare

8 Publications

## Informations de base

Numéro de catalogue:  
10393-1-AP

Taille:  
150ul, Concentration: 700 µg/ml by Nanodrop and 340 µg/ml by Bradford method using BSA as the standard;

Hôte:  
Lapin

Isotype:  
IgG

Immunogen Catalog Number:  
AG0592

Numéro d'acquisition GenBank:  
BC003055

Identification du gène (NCBI):  
28991

Nom complet:  
COMM domain containing 5

MW calculé  
25 kDa

MW observés:  
25 kDa

Méthode de purification:  
Purification par affinité contre l'antigène

Dilutions recommandées:  
WB 1:500-1:2000  
IP 0.5-4.0 ug for IP and 1:500-1:1000 for WB  
IF 1:50-1:500

## Applications

Applications testées:  
IF, IP, WB, ELISA

Demandes citées:  
CoIP, IF, IHC, WB

Spécificité de l'espèce:  
Humain, souris

Espèces citées:  
Humain, souris

Contrôles positifs:

WB : tissu rénal de souris, cellules HEK-293, cellules MCF-7, tissu cardiaque de souris, tissu cardiaque humain, tissu d'estomac de souris, tissu d'estomac humain, tissu placentaire humain

IP : tissu cardiaque de souris,

IF : cellules HeLa,

## Informations générales

COMM domain containing 5 (COMMD5, synonyms: HCARG, HT002) is a hypertension-related calcium-regulated gene. COMMD5 is negatively regulated by extracellular calcium concentration, and its basal mRNA levels were higher in hypertensive animals. Tissue distribution of COMMD5 shows a preponderance in the heart, stomach, jejunum, kidney (tubular fraction), liver, and adrenal gland (mainly in the medulla). COMMD5 mRNA is significantly more expressed in adult than in fetal organs, and its levels are decreased in tumors and cancerous cell lines. COMMD5 protein has no transmembrane domain, but contains 67% -helix content, a calcium-binding site, four putative "leucine zipper" motifs, and a nuclear receptor-binding domain. At the subcellular level, COMMD5 shows a nuclear localization.

## Publications notables

Autrice	Pubmed ID	Journal	Application
Hiroyuki Matsuda	21921141	J Am Soc Nephrol	IHC
Chen Bai-Li BL	18949406	Oncol Rep	IHC
Hiroyuki Matsuda	29050225	Oncotarget	IHC

## Stockage

Stockage:

Stocker à -20°C. Stable pendant un an après l'expédition.

Tampon de stockage:

PBS avec azoture de sodium à 0,02 % et glycérol à 50 % pH 7,3

L'aliquotage n'est pas nécessaire pour le stockage à -20C

\*\*\* Les 20ul contiennent 0,1% de BSA.

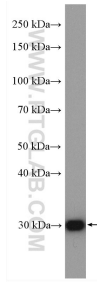
For technical support and original validation data for this product please contact:

T: 1 (888) 4PTGLAB (1-888-478-4522) (toll free in USA), or 1(312) 455-8498 (outside USA)

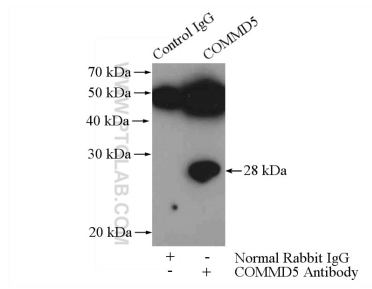
E: proteintech@ptglab.com  
W: ptglab.com

This product is exclusively available under Proteintech Group brand and is not available to purchase from any other manufacturer.

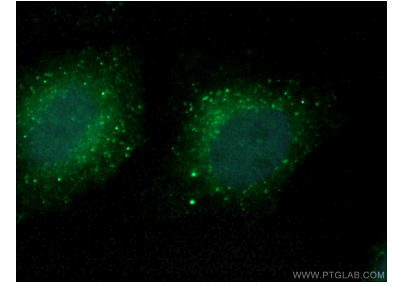
## Données de validation sélectionnées



mouse kidney tissue were subjected to SDS PAGE followed by western blot with 10393-1-AP (COMMD5 antibody) at dilution of 1:1000 incubated at room temperature for 1.5 hours.



IP Result of anti-COMMD5 (IP:10393-1-AP, 4ug; Detection:10393-1-AP 1:500) with mouse heart tissue lysate 3200ug.



Immunofluorescent analysis of (4% PFA) fixed HeLa cells using 10393-1-AP (COMMD5 antibody) at dilution of 1:50 and Alexa Fluor 488-Conjugated AffiniPure Goat Anti-Rabbit IgG(H+L).