

À des fins de recherche uniquement

Anticorps Polyclonal de lapin anti-FMNL1



Numéro de catalogue: 10395-1-AP

Informations de base

Numéro de catalogue: 10395-1-AP	Numéro d'acquisition GenBank: BC001710	Méthode de purification: Purification par affinité contre l'antigène
Taille: 150ul , Concentration: 245 µg/ml by Nanodrop;	Identification du gène (NCBI): 752	Dilutions recommandées: WB 1:200-1:500 IHC 1:50-1:500 IF 1:200-1:800
Hôte: Lapin	Nom complet: formin-like 1	
Isotype: IgG	MW calculé 160 kDa	
Immunogen Catalog Number: AG0594	MW observés: 150-160 kDa	

Applications

Applications testées: IF, IHC, WB, ELISA	Contrôles positifs: WB : cellules Raji, cellules HeLa, cellules Jurkat IHC : tissu d'intestin grêle humain, IF : cellules U2OS, Saos-2 cells
Spécificité de l'espèce: Humain	
Remarque-IHC: il est suggéré de démasquer l'antigène avec un tampon de TE buffer pH 9,0; (*) À défaut, 'le démasquage de l'antigène peut être effectué avec un tampon citrate pH 6,0.	

Informations générales

FMNL1, also named as C17orf1, C17orf1B and FMNL, belongs to the formin homology family. It may play a role in the control of cell motility and survival of macrophages. FMNL1 protein may be involved in anti-apoptosis mechanisms. It is overexpressed in lymphoid malignancies and is found associated with Akt. The MW of FMNL1 is about 150-160 kDa. (PMID: 16494944)

Stockage

Stockage:
Stocker à -20°C. Stable pendant un an après l'expédition.
Tampon de stockage:
PBS avec azoture de sodium à 0,02 % et glycérol à 50 % pH 7,3
L'aliquotage n'est pas nécessaire pour le stockage à -20C

*** Les 20ul contiennent 0,1% de BSA.

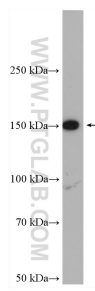
For technical support and original validation data for this product please contact:

T: 1 (888) 4PTGLAB (1-888-478-4522) (toll free in USA), or 1(312) 455-8498 (outside USA)

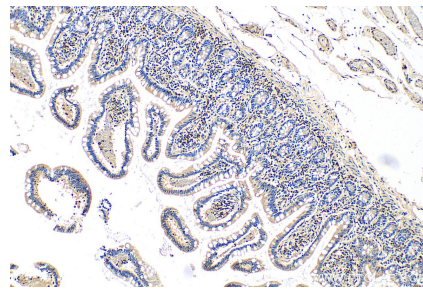
E: proteintech@ptglab.com
W: ptglab.com

This product is exclusively available under Proteintech Group brand and is not available to purchase from any other manufacturer.

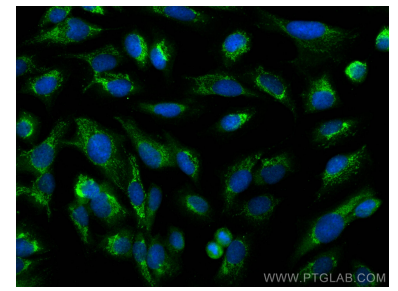
Données de validation sélectionnées



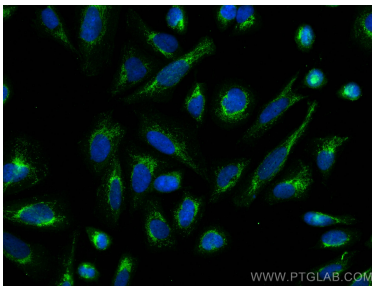
Raji cells were subjected to SDS PAGE followed by western blot with 10395-1-AP (FMNL1 antibody) at dilution of 1:300 incubated at room temperature for 1.5 hours.



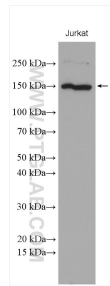
Immunohistochemical analysis of paraffin-embedded human small intestine tissue slide using 10395-1-AP (FMNL1 antibody) at dilution of 1:200 (under 10x lens).



Immunofluorescent analysis of (-20°C Methanol) fixed U2OS cells using FMNL1 antibody (10395-1-AP) at dilution of 1:400 and CoraLite®488-Conjugated AffiniPure Goat Anti-Rabbit IgG(H+L).



Immunofluorescent analysis of (-20°C Methanol) fixed Saos-2 cells using FMNL1 antibody (10395-1-AP) at dilution of 1:400 and CoraLite®488-Conjugated AffiniPure Goat Anti-Rabbit IgG(H+L).



Jurkat cells were subjected to SDS PAGE followed by western blot with 10395-1-AP (FMNL1 antibody) at dilution of 1:800 incubated at room temperature for 1.5 hours.