

À des fins de recherche uniquement

Anticorps Polyclonal de lapin anti-CARD14



Numéro de catalogue: 10400-1-AP

3 Publications

Informations de base

| | | |
|--|---|--|
| Numéro de catalogue: 10400-1-AP | Numéro d'acquisition GenBank: BC018142 | Méthode de purification: Purification par affinité contre l'antigène |
| Taille: 150ul, Concentration: 287 µg/ml by Nanodrop and 1333 µg/ml by Bradford method using BSA as the standard; | Identification du gène (NCBI): 79092 | Dilutions recommandées: WB 1:500-1:1000 |
| Hôte: Lapin | Nom complet: caspase recruitment domain family, member 14 | |
| Isotype: IgG | MW calculé: 113 kDa | |
| Immunogen Catalog Number: AG0628 | MW observés: 113-140 kDa | |

Applications

| | |
|--|---|
| Applications testées: WB, ELISA | Contrôles positifs: WB : cellules HeLa, |
| Demandes citées: WB | |
| Spécificité de l'espèce: Humain, rat, souris | |
| Espèces citées: Humain, souris | |

Informations générales

CARD14/CARMA2 is a novel caspase recruitment domain-containing protein 14 and is also a membrane-associated guanylate kinase (MAGUK) family member. CARD domain is a protein-binding element that mediates the assembly of CARD-containing proteins into apoptosis and NF-kappaB signaling complexes, which has been implicated in inflammatory disorders. CARD14 activates NF-kappaB signaling via interaction with BCL10. Defects in CARD14 are the cause of susceptibility to psoriasis type 2 (PSORS2), which is a common inflammatory disorder of the skin and other organs caused by abnormal keratinocyte proliferation and infiltration of inflammatory cells into the dermis and epidermis.

Publications notables

| Autrice | Pubmed ID | Journal | Application |
|-------------------|-----------|--------------|-------------|
| Domien Vanneste | 36009554 | Biomedicines | WB |
| J Randall McAuley | 31420608 | Oncogene | WB |
| Elien Van Nuffel | 32343482 | EMBO Rep | WB |

Stockage

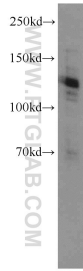
Stockage:
Stocker à -20°C. Stable pendant un an après l'expédition.
Tampon de stockage:
PBS avec azoture de sodium à 0,02 % et glycérol à 50 % pH 7,3
L'aliquotage n'est pas nécessaire pour le stockage à -20C

*** Les 20ul contiennent 0,1% de BSA.

For technical support and original validation data for this product please contact:
T: 1 (888) 4PTGLAB (1-888-478-4522) (toll free in USA), or 1(312) 455-8498 (outside USA)
E: proteintech@ptglab.com
W: ptglab.com

This product is exclusively available under Proteintech Group brand and is not available to purchase from any other manufacturer.

Données de validation sélectionnées



HeLa cells were subjected to SDS PAGE followed by western blot with 10400-1-AP (CARD14 antibody) at dilution of 1:500 incubated at room temperature for 1.5 hours.