

À des fins de recherche uniquement

Anticorps Polyclonal de lapin anti-Cytohesin 2



Numéro de catalogue: 10405-1-AP

Phare

4 Publications

Informations de base

Numéro de catalogue:

10405-1-AP

Taille:

150ul, Concentration: 800 µg/ml by Nanodrop and 380 µg/ml by Bradford method using BSA as the standard;

Hôte:

Lapin

Isotype:

IgG

Immunogen Catalog Number:

AG0687

Numéro d'acquisition GenBank:

BC004361

Identification du gène (NCBI):

9266

Nom complet:

cytohesin 2

MW calculé

47 kDa

MW observés:

47 kDa

Méthode de purification:

Purification par affinité contre l'antigène

Dilutions recommandées:

WB 1:500-1:2000

IP 0.5-4.0 ug for IP and 1:500-1:1000 for WB

IHC 1:50-1:500

Applications

Applications testées:

IHC, IP, WB, ELISA

Demandes citées:

IF, IHC, IP, WB

Spécificité de l'espèce:

Humain, souris

Espèces citées:

Humain, rat, souris

Remarque-IHC: il est suggéré de démasquer l'antigène avec un tampon de TE buffer pH 9.0; (*) A défaut, le démasquage de l'antigène peut être effectué avec un tampon citrate pH 6,0.

Contrôles positifs:

WB : tissu cardiaque de souris,

IP : tissu cardiaque de souris,

IHC : tissu de côlon humain, tissu d'estomac humain

Informations générales

Pleckstrin homology, Sec7 and coiled/coil domains 2 (PSCD2) is a member of the PSCD family. Members of this family have identical structural organization that consists of an N-terminal coiled-coil motif, a central Sec7 domain, and a C-terminal pleckstrin homology (PH) domain. The coiled-coil motif is involved in homodimerization, the Sec7 domain contains guanine-nucleotide exchange protein (GEP) activity, and the PH domain interacts with phospholipids and is responsible for association of PSCDs with membranes. Members of this family appear to mediate the regulation of protein sorting and membrane trafficking. PSCD2 exhibits GEP activity in vitro with small G proteins ARF1, ARF3, and ARF6.

Publications notables

Autrice	Pubmed ID	Journal	Application
Yuqi Zhai	36168805	Open Biol	WB,IP
Hidenori Ito	34800437	J Biol Chem	WB,IHC
Jinbin Zhai	26085633	J Neurosci	WB, IF

Stockage

Stockage:

Stocker à -20°C. Stable pendant un an après l'expédition.

Tampon de stockage:

PBS avec azoture de sodium à 0,02 % et glycérol à 50 % pH 7,3

L'aliquoteage n'est pas nécessaire pour le stockage à -20C

*** Les 20ul contiennent 0,1% de BSA.

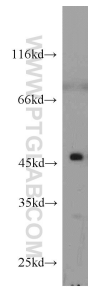
For technical support and original validation data for this product please contact:

T: 1 (888) 4PTGLAB (1-888-478-4522) (toll free in USA), or 1(312) 455-8498 (outside USA)

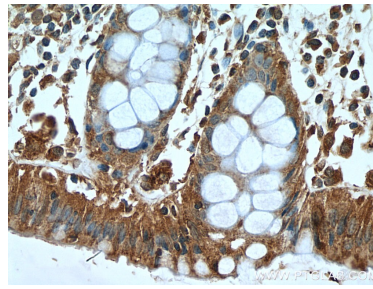
E: proteintech@ptglab.com
W: ptglab.com

This product is exclusively available under Proteintech Group brand and is not available to purchase from any other manufacturer.

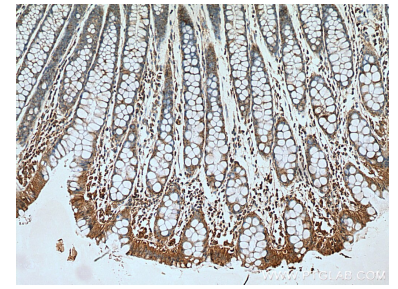
Données de validation sélectionnées



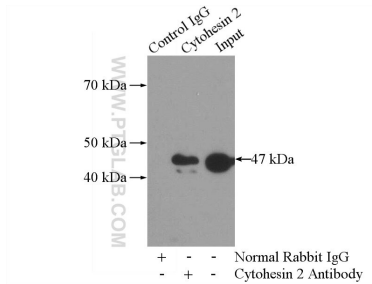
mouse heart tissue were subjected to SDS PAGE followed by western blot with 10405-1-AP (Cytohesin 2 antibody) at dilution of 1:1000 incubated at room temperature for 1.5 hours.



Immunohistochemical analysis of paraffin-embedded human colon tissue slide using 10405-1-AP (Cytohesin 2 antibody) at dilution of 1:200 (under 40x lens). Heat mediated antigen retrieval with Tris-EDTA buffer (pH 9.0).



Immunohistochemical analysis of paraffin-embedded human colon tissue slide using 10405-1-AP (Cytohesin 2 antibody) at dilution of 1:200 (under 10x lens). Heat mediated antigen retrieval with Tris-EDTA buffer (pH 9.0).



IP Result of anti-Cytohesin 2 (IP:10405-1-AP, 4ug; Detection:10405-1-AP 1:500) with mouse heart tissue lysate 4000ug.