

À des fins de recherche uniquement

Anticorps Polyclonal de lapin anti-RFC2



Numéro de catalogue: 10410-1-AP

5 Publications

Informations de base

Numéro de catalogue:
10410-1-AP

Taille:
150ul , Concentration: 240 µg/ml by Nanodrop and 153 µg/ml by Bradford method using BSA as the standard;

Hôte:
Lapin

Isotype:
IgG

Immunogen Catalog Number:
AG0663

Numéro d'acquisition GenBank:
BC002813

Identification du gène (NCBI):
5982

Nom complet:
replication factor C (activator 1) 2,
40kDa

MW calculé
40 kDa

MW observés:
35-40 kDa

Méthode de purification:
Purification par affinité contre l'antigène

Dilutions recommandées:
WB 1:500-1:1000
IP 0.5-4.0 ug for IP and 1:500-1:1000 for WB
IF 1:50-1:500

Applications

Applications testées:
IF, IP, WB, ELISA

Demandes citées:
WB

Spécificité de l'espèce:
Humain, rat, souris

Espèces citées:
Humain, souris

Contrôles positifs:

WB : cellules HeLa, cellules MCF-7, cellules Raji

IP : cellules HeLa,

IF : cellules HeLa,

Informations générales

RFC2, also named as RFC40, belongs to the activator 1 small subunits family. It is a 40kd Activator 1 subunit. It binds ATP. The elongation of primed DNA templates by DNA polymerase delta and epsilon requires the action of the accessory proteins proliferating cell nuclear antigen (PCNA) and activator 1. RFC2 is a constitutively expressed protein essential for both DNA repair and replication. (PMID: 20660762).

Publications notables

Autrice	Pubmed ID	Journal	Application
Caron Etienne E	21952136	Mol Syst Biol	WB
Chiang Po-Min PM	20660762	Proc Natl Acad Sci U S A	WB
Xu Zhao	35210438	Sci Rep	WB

Stockage

Stockage:

Stocker à -20°C. Stable pendant un an après l'expédition.

Tampon de stockage:

PBS avec azoture de sodium à 0,02 % et glycérol à 50 % pH 7,3

L'aliquotage n'est pas nécessaire pour le stockage à -20C

*** Les 20ul contiennent 0,1% de BSA.

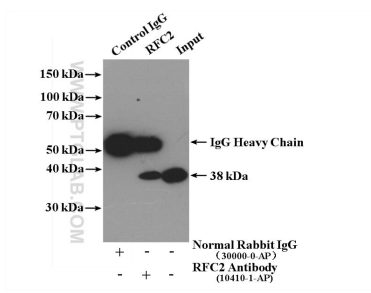
For technical support and original validation data for this product please contact:

T: 1 (888) 4PTGLAB (1-888-478-4522) (toll free in USA), or 1(312) 455-8498 (outside USA)

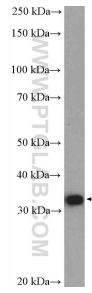
E: proteintech@ptglab.com
W: ptglab.com

This product is exclusively available under Proteintech Group brand and is not available to purchase from any other manufacturer.

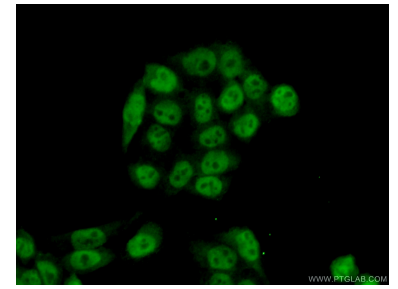
Données de validation sélectionnées



IP result of anti-RFC2 (IP:10410-1-AP, 4 μ g; Detection:10410-1-AP 1:500) with HeLa cells lysate 3000 μ g.



HeLa cells were subjected to SDS PAGE followed by western blot with 10410-1-AP (RFC2 Antibody) at dilution of 1:600 incubated at room temperature for 1.5 hours.



Immunofluorescent analysis of (10% Formaldehyde) fixed HeLa cells using 10410-1-AP (RFC2 antibody) at dilution of 1:50 and Alexa Fluor 488-conjugated AffiniPure Goat Anti-Rabbit IgG(H+L).