

À des fins de recherche uniquement

# Anticorps Polyclonal de lapin anti-RPA2



Numéro de catalogue: 10412-1-AP

12 Publications

## Informations de base

Numéro de catalogue:  
10412-1-AP

Taille:  
150ul, Concentration: 600 µg/ml by Nanodrop and 293 µg/ml by Bradford method using BSA as the standard;

Hôte:  
Lapin

Isotype:  
IgG

Immunogen Catalog Number:  
AG0690

Numéro d'acquisition GenBank:  
BC001630

Identification du gène (NCBI):  
6118

Nom complet:  
replication protein A2, 32kDa

MW calculé  
29 kDa

MW observés:  
32 kDa

Méthode de purification:  
Purification par affinité contre l'antigène

Dilutions recommandées:  
WB 1:1000-1:6000  
IP 0.5-4.0 ug for IP and 1:500-1:2000 for WB  
IHC 1:20-1:200  
IF 1:50-1:500

## Applications

Applications testées:  
IF, IHC, IP, WB, ELISA

Demandes citées:  
ChIP, IF, IHC, IP, WB

Spécificité de l'espèce:  
Humain, rat, souris

Espèces citées:  
Humain, souris

**Remarque-IHC: il est suggéré de démasquer l'antigène avec un tampon de TE buffer pH 9,0; (\*) A défaut, 'le démasquage de l'antigène peut être 'effectué avec un tampon citrate pH 6,0.**

Contrôles positifs:

WB : cellules HEK-293, cellules HeLa, cellules SH-SY5Y, tissu cérébral de souris

IP : tissu rénal de souris,

IHC : tissu de gliome humain,

IF : cellules HeLa,

## Informations générales

RPA2, a subunit of the heterotrimeric replication protein A (RPA) complex, is overexpressed in various cancers. RPA2 is a major target for upstream kinases, including CDKs and the three PIKKs (ATR, ataxia-telangiectasia mutated [ATM], and DNA-PK). RPA2 comprises multiple critical Ser/Tr residues that are phosphorylated in sequential order in response to genotoxic stress.

## Publications notables

| Autrice   | Pubmed ID | Journal          | Application |
|-----------|-----------|------------------|-------------|
| Tao Zhang | 36050397  | Nat Commun       | WB          |
| Jiao Zhao | 35597237  | Mol Cell         | WB          |
| Yushan Li | 35341968  | J Genet Genomics | IF          |

## Stockage

Stockage:

Stocker à -20°C. Stable pendant un an après l'expédition.

Tampon de stockage:

PBS avec azoture de sodium à 0,02 % et glycérol à 50 % pH 7,3

L'aliquotage n'est pas nécessaire pour le stockage à -20C

\*\*\* Les 20ul contiennent 0,1% de BSA.

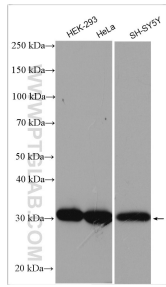
For technical support and original validation data for this product please contact:

T: 1 (888) 4PTGLAB (1-888-478-4522) (toll free in USA), or 1(312) 455-8498 (outside USA)

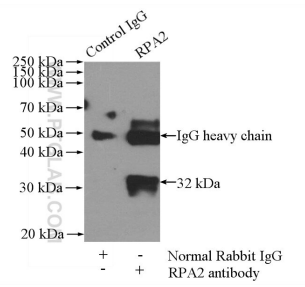
E: proteintech@ptglab.com  
W: ptglab.com

This product is exclusively available under Proteintech Group brand and is not available to purchase from any other manufacturer.

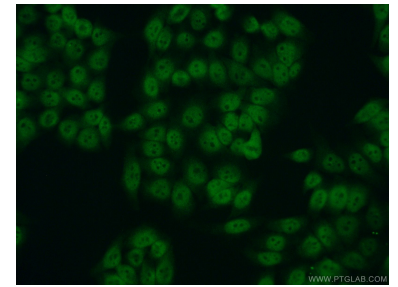
## Données de validation sélectionnées



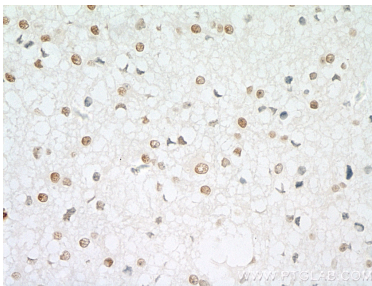
Various lysates were subjected to SDS PAGE followed by western blot with 10412-1-Ap (RPA2 antibody) at dilution of 1:3000 incubated at room temperature for 1.5 hours.



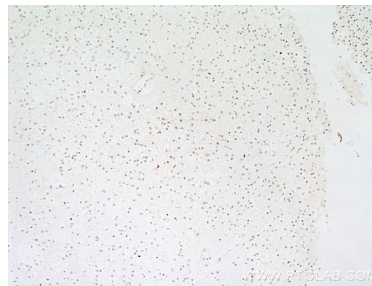
IP Result of anti-RPA2 (IP:10412-1-Ap, 4 $\mu$ g; Detection:10412-1-Ap 1:1000) with mouse kidney tissue lysate 4000 $\mu$ g.



Immunofluorescent analysis of (10% Formaldehyde) fixed HeLa cells using 10412-1-Ap (RPA2 antibody) at dilution of 1:50 and CoraLite488-Conjugated AffiniPure Goat Anti-Rabbit IgG(H+L).



Immunohistochemical analysis of paraffin-embedded human gliomas tissue slide using 10412-1-Ap (RPA2 antibody) at dilution of 1:100 (under 40x lens)..



Immunohistochemical analysis of paraffin-embedded human gliomas tissue slide using 10412-1-Ap (RPA2 antibody) at dilution of 1:100 (under 10x lens)..