

À des fins de recherche uniquement

Anticorps Polyclonal de lapin anti-CEA



Numéro de catalogue: 10421-1-AP

Phare

6 Publications

Informations de base

Numéro de catalogue: 10421-1-AP	Numéro d'acquisition GenBank: BC034671	Méthode de purification: Purification par affinité contre l'antigène
Taille: 150ul , Concentration: 450 µg/ml by Nanodrop and 307 µg/ml by Bradford method using BSA as the standard;	Identification du gène (NCBI): 1048	Dilutions recommandées: WB 1:500-1:2000 IHC 1:200-1:800 IF 1:50-1:500
Hôte: Lapin	Nom complet: carcinoembryonic antigen-related cell adhesion molecule 5	
Isotype: IgG	MW calculé 77 kDa	
Immunogen Catalog Number: AG0672	MW observés: 180-200 kDa, 77 kDa	

Applications

Applications testées:

IF, IHC, WB, ELISA

Demandes citées:

ChIP, IHC, WB

Spécificité de l'espèce:

Humain

Espèces citées:

Humain, souris

Remarque-IHC: il est suggéré de démasquer l'antigène avec un tampon de TE buffer pH 9,0; (*) A défaut, 'le démasquage de l'antigène peut être 'effectué avec un tampon citrate pH 6,0.

Contrôles positifs:

WB : cellules HT-29, cellules MCF-7, salive humain, salive humaine

IHC : tissu de cancer du côlon humain, tissu d'appendicite humain, tissu de cancer de l'estomac humain, tissu de cancer du poumon humain

IF : tissu de cancer du côlon humain,

Informations générales

Carcinoembryonic antigen (CEA), also known as CEACAM5 or CD66e, is a cell surface glycoprotein belonging to the immunoglobulin superfamily, mainly serving as a cell adhesion molecule mediating intercellular contact by both homophilic and heterophilic binding (PMID: 21731662). CEA inhibits anoikis and plays a role in tumorigenesis and metastasis. CEA has been found to be overexpressed in a wide variety of human cancers, including colon, breast, and lung (PMID: 17167768). CEA is a tumor marker and is routinely exploited for diagnosis.

Publications notables

Autrice	Pubmed ID	Journal	Application
Jorge Lascano	36084115	PLoS One	WB
Ina Rudloff	31734267	Transl Res	WB
P-H Zhou	26005859	Gene Ther	IHC

Stockage

Stockage:

Stocker à -20°C. Stable pendant un an après l'expédition.

Tampon de stockage:

PBS avec azoture de sodium à 0,02 % et glycérol à 50 % pH 7,3

L'aliquotage n'est pas nécessaire pour le stockage à -20C

*** Les 20ul contiennent 0,1% de BSA.

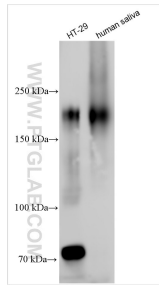
For technical support and original validation data for this product please contact:

T: 1 (888) 4PTGLAB (1-888-478-4522) (toll free in USA), or 1(312) 455-8498 (outside USA)

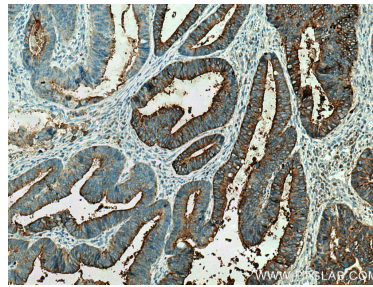
E: proteintech@ptglab.com
W: ptglab.com

This product is exclusively available under Proteintech Group brand and is not available to purchase from any other manufacturer.

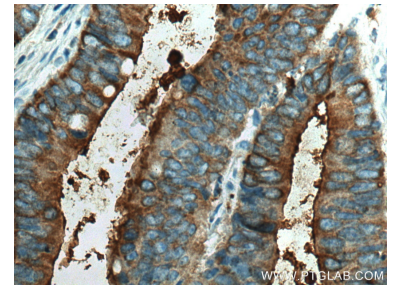
Données de validation sélectionnées



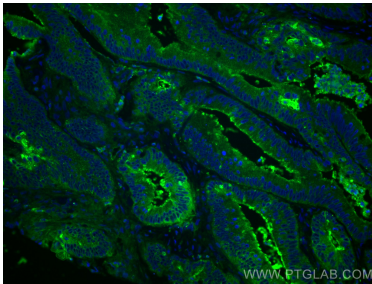
Various lysates were subjected to SDS PAGE followed by western blot with 10421-1-AP (CEA antibody) at dilution of 1:1000 incubated at room temperature for 1.5 hours.



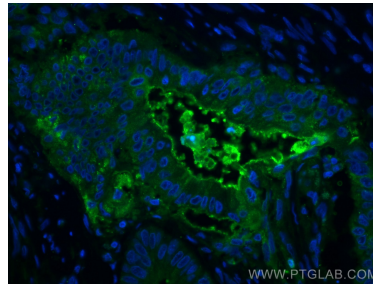
Immunohistochemical analysis of paraffin-embedded human colon cancer tissue slide using 10421-1-AP (CEA antibody) at dilution of 1:400 (under 10x lens). Heat mediated antigen retrieval with Tris-EDTA buffer (pH 9.0).



Immunohistochemical analysis of paraffin-embedded human colon cancer tissue slide using 10421-1-AP (CEA antibody) at dilution of 1:400 (under 40x lens). Heat mediated antigen retrieval with Tris-EDTA buffer (pH 9.0).



Immunofluorescent analysis of (4% PFA) fixed human colon cancer tissue using CEA antibody (10421-1-AP) at dilution of 1:200 and CoraLite®488-Conjugated AffiniPure Goat Anti-Rabbit IgG(H+L).



Immunofluorescent analysis of (4% PFA) fixed human colon cancer tissue using CEA antibody (10421-1-AP) at dilution of 1:200 and CoraLite®488-Conjugated AffiniPure Goat Anti-Rabbit IgG(H+L).