

À des fins de recherche uniquement

Anticorps Polyclonal de lapin anti-JTV1



Numéro de catalogue: 10424-1-AP

Phare

21 Publications

Informations de base

Numéro de catalogue:

10424-1-AP

Taille:

150ul, Concentration: 600 µg/ml by Nanodrop;

Hôte:

Lapin

Isotype:

IgG

Immunogen Catalog Number:

AG0675

Numéro d'acquisition GenBank:

BC002853

Identification du gène (NCBI):

7965

Nom complet:

JTV1 gene

MW calculé

36 kDa

MW observés:

35 kDa

Méthode de purification:

Purification par affinité contre l'antigène

Dilutions recommandées:

WB 1:500-1:1000

IP 0.5-4.0 ug for IP and 1:500-1:2000 for WB

IHC 1:20-1:200

IF 1:10-1:100

Applications

Applications testées:

IF, IHC, IP, WB, ELISA

Demandes citées:

IF, WB

Spécificité de l'espèce:

Humain, rat, souris

Espèces citées:

Humain, rat, souris

Remarque-IHC: il est suggéré de démasquer l'antigène avec un tampon de TE buffer pH 9,0; (*) À défaut, le démasquage de l'antigène peut être effectué avec un tampon citrate pH 6,0.

Contrôles positifs:

WB : cellules HeLa, cellules HepG2, cellules K-562, cellules L02, cellules NIH/3T3, tissu hépatique de rat, tissu hépatique de souris

IP : cellules HeLa,

IHC : tissu testiculaire humain, tissu de cervelet de souris, tissu de cervelet humain, tissu rénal humain, tissu testiculaire de souris

IF : cellules HeLa, cellules HepG2

Informations générales

JTV1, also named p38, AIMP2, was first known as a factor associated with macromolecular protein complex, which consists several different aminoacyl-tRNA synthetases. JTV1 is a scaffold protein required for the assembly and stability of the multi-tRNA synthetase complex. JTV1 could act as a mediator of TGF-beta signaling and its functional importance in the control of MYC during lung differentiation. Blocks MDM2-mediated ubiquitination and degradation of p53/TP53. Functions as a proapoptotic factor. This is a rabbit polyclonal antibody raised against full-length of JTV1. There're two isoforms of JTV1 with MW about 27 kDa and 35 kDa,

Publications notables

Autrice	Pubmed ID	Journal	Application
Ko Han Seok HS	20823226	Proc Natl Acad Sci U S A	WB
Krishnendu Khan	36037331	Proc Natl Acad Sci U S A	WB
Hyojung Kim	28972555	Int J Mol Sci	WB

Stockage

Stockage:

Stocker à -20°C. Stable pendant un an après l'expédition.

Tampon de stockage:

PBS avec azoture de sodium à 0,02 % et glycérol à 50 % pH 7,3

L'aliquotage n'est pas nécessaire pour le stockage à -20C

*** Les 20ul contiennent 0,1% de BSA.

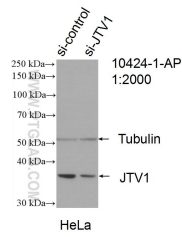
For technical support and original validation data for this product please contact:

T: 1 (888) 4PTGLAB (1-888-478-4522) (toll free in USA), or 1(312) 455-8498 (outside USA)

E: proteintech@ptglab.com
W: ptglab.com

This product is exclusively available under Proteintech Group brand and is not available to purchase from any other manufacturer.

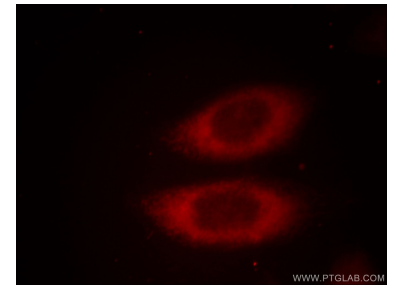
Données de validation sélectionnées



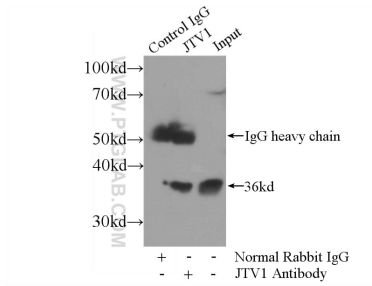
WB result of JTV1 antibody (10424-1-AP; 1:2000; incubated at room temperature for 1.5 hours) with sh-Control and sh-JTV1 transfected HeLa cells.



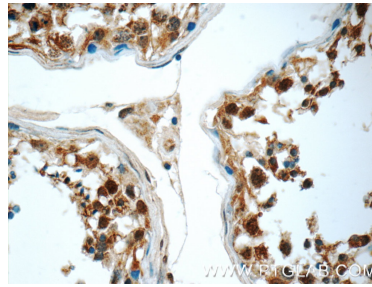
HeLa cells were subjected to SDS PAGE followed by western blot with 10424-1-AP (JTV1 antibody) at dilution of 1:1000 incubated at room temperature for 1.5 hours.



Immunofluorescent analysis of HeLa cells, using JTV1 antibody 10424-1-AP at 1:25 dilution and Rhodamine-labeled goat anti-rabbit IgG (red).



IP Result of anti-JTV1 (IP:10424-1-AP, 3ug; Detection:10424-1-AP 1:1000) with HeLa cells lysate 800ug.



Immunohistochemical analysis of paraffin-embedded human testis tissue slide using 10424-1-AP (JTV1 Antibody) at dilution of 1:50 (under 40x lens).