

À des fins de recherche uniquement

Anticorps Polyclonal de lapin anti-YY1AP1



Numéro de catalogue: 10425-1-AP

2 Publications

Informations de base

Numéro de catalogue:
10425-1-AP

Taille:
150ul, Concentration: 350 µg/ml by
Nanodrop and 150 µg/ml by Bradford
method using BSA as the standard;

Hôte:
Lapin

Isotype:
IgG

Immunogen Catalog Number:
AG0692

Numéro d'acquisition GenBank:
BC003500

Identification du gène (NCBI):
55249

Nom complet:
YY1 associated protein 1

MW calculé
75 kDa

MW observés:
75 kDa and 50 kDa

Méthode de purification:
Purification par affinité contre
l'antigène

Dilutions recommandées:
WB 1:500-1:1000
IF 1:10-1:100

Applications

Applications testées:
IF, WB, ELISA

Demandes citées:
IF, WB

Spécificité de l'espèce:
Humain, souris

Espèces citées:
Humain, souris

Contrôles positifs:

WB : cellules MDA-MB-231,

IF : cellules HepG2,

Informations générales

YY1AP1 (YY1 associated protein 1), also known as HCCA2 (hepatocellular carcinoma-associated protein 2) or YY1AP, is a 796 amino acid protein that localizes to both the nucleus and the cytoplasm and exists as seven alternatively spliced isoforms. We detected 75 kDa and 50 kDa two isoforms. YY1AP1 is expressed ubiquitously with notable expression in lung, brain, spleen, pancreas, small intestine, heart, colon and skeletal muscle, YY1AP1 interacts with and enhances the transcriptional activation activity of YY1. YY1AP1 is expressed at high levels in liver carcinomas, suggesting a role in tumor transformation and metastasis. YY1AP1 may play a role in cell cycle regulation.

Publications notables

Autrice	Pubmed ID	Journal	Application
Jing Huang	33110216	Cell Death Differ	WB,IF
Emily Schoenhofen Sharp	20230128	Psychol Aging	WB,IF

Stockage

Stockage:

Stocker à -20°C. Stable pendant un an après l'expédition.

Tampon de stockage:

PBS avec azoture de sodium à 0,02 % et glycérol à 50 % pH 7,3

L'aliquotage n'est pas nécessaire pour le stockage à -20C

*** Les 20ul contiennent 0,1% de BSA.

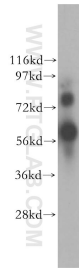
For technical support and original validation data for this product please contact:

T: 1 (888) 4PTGLAB (1-888-478-4522) (toll free
in USA), or 1(312) 455-8498 (outside USA)

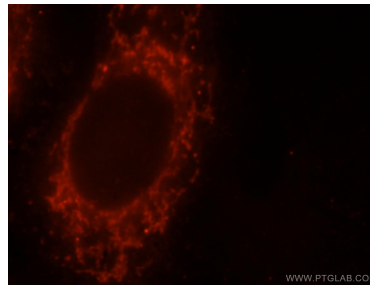
E: proteintech@ptglab.com
W: ptglab.com

This product is exclusively available under Proteintech Group brand and is not available to purchase from any other manufacturer.

Données de validation sélectionnées



MDA-MB-231 cells were subjected to SDS PAGE followed by western blot with 10425-1-AP (YY1AP1 antibody) at dilution of 1:800 incubated at room temperature for 1.5 hours.



Immunofluorescent analysis of HepG2 cells, using YY1AP1 antibody 10425-1-AP at 1:25 dilution and Rhodamine-labeled goat anti-rabbit IgG (red).