

À des fins de recherche uniquement

Anticorps Polyclonal de lapin anti-Calnexin



Numéro de catalogue: 10427-2-AP

271 Publications

Informations de base

Numéro de catalogue: 10427-2-AP	Numéro d'acquisition GenBank: BC003552	Méthode de purification: Purification par affinité contre l'antigène
Taille: 150ul, Concentration: 500 µg/ml by Nanodrop;	Identification du gène (NCBI): 821	Dilutions recommandées: WB 1:5000-1:50000 IHC 1:50-1:500 IF 1:50-1:500
Hôte: Lapin	Nom complet: calnexin	
Isotype: IgG	MW calculé: 90 kDa	
Immunogen Catalog Number: AG0697	MW observés: 90 kDa	

Applications

Applications testées:
FC, IF, IHC, WB, ELISA

Demandes citées:
ELISA, IF, IHC, WB

Spécificité de l'espèce:
Humain, rat, souris

Espèces citées:
Chèvre, Humain, porc, rat, singe, souris, Hamster

Remarque-IHC: il est suggéré de démasquer l'antigène avec un tampon de TE buffer pH 9,0; (*) À défaut, le démasquage de l'antigène peut être effectué avec un tampon citrate pH 6,0.

Contrôles positifs:

WB : cellules HEK-293, cellules HeLa, cellules HepG2, cellules K-562, cellules MCF-7, cellules NIH/3T3, cellules RAW 264.7, cellules U2OS

IHC : tissu de cancer du sein humain, tissu de cancer du col de l'utérus humain

IF : cellules HepG2, cellules SKOV-3

Informations générales

Calnexin is a molecular chaperone that resides in the endoplasmic reticulum (ER) and participates in the folding and assembly of newly synthesized proteins. Calnexin is highly abundant in ER and is frequently used as an ER marker.

Publications notables

Autrice	Pubmed ID	Journal	Application
Chih-Hang Anthony Tang	32999453	Cell Mol Immunol	WB
Xuedan Li	32999434	Sci Rep	WB
Yinghua Zhao	36238596	Front Microbiol	WB,IF

Stockage

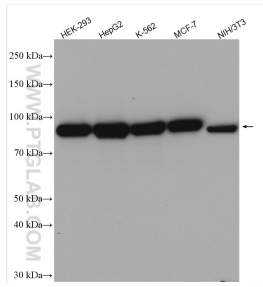
Stockage:
Stocker à -20°C. Stable pendant un an après l'expédition.
Tampon de stockage:
PBS avec azoture de sodium à 0,02 % et glycérol à 50 % pH 7,3
L'aliquotage n'est pas nécessaire pour le stockage à -20C

*** Les 20ul contiennent 0,1% de BSA.

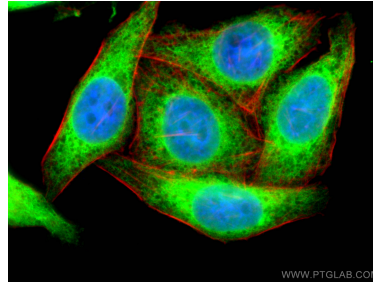
For technical support and original validation data for this product please contact:
T: 1 (888) 4PTGLAB (1-888-478-4522) (toll free in USA), or 1(312) 455-8498 (outside USA)
E: proteintech@ptglab.com
W: ptglab.com

This product is exclusively available under Proteintech Group brand and is not available to purchase from any other manufacturer.

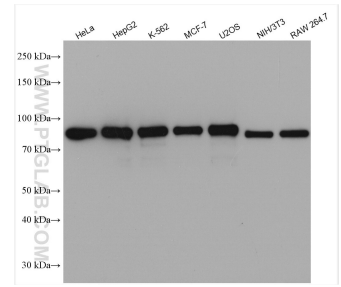
Données de validation sélectionnées



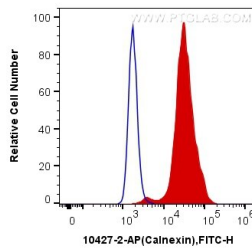
Various lysates were subjected to SDS PAGE followed by western blot with 10427-2-AP (Calnexin antibody) at dilution of 1:20000 incubated at room temperature for 1.5 hours.



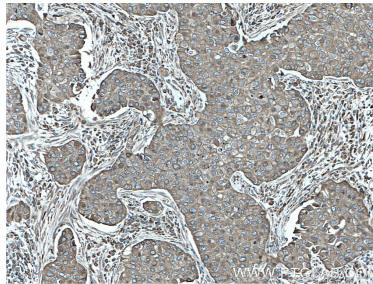
Immunofluorescent analysis of (10% Formaldehyde) fixed HepG2 cells using Calnexin antibody (10427-2-AP) at dilution of 1:200 and CoraLite®488-Conjugated AffiniPure Goat Anti-Rabbit IgG(H+L). The cytoskeleton was stained with CL594-Phalloidin (red).



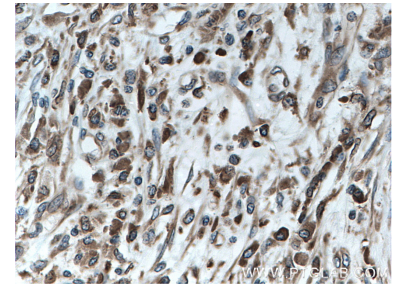
Various lysates were subjected to SDS PAGE followed by western blot with 10427-2-AP (Calnexin antibody) at dilution of 1:10000 incubated at room temperature for 1.5 hours.



1X10⁶ HeLa cells were intracellularly stained with 0.2 ug Anti-Human Calnexin (10427-2-AP) and CoraLite®488-Conjugated AffiniPure Goat Anti-Rabbit IgG(H+L) at dilution 1:1000 (red), or 0.2 ug Control Antibody. Cells were fixed with 4% PFA and permeabilized with Flow Cytometry Perm Buffer (PF00011-C).



Immunohistochemical analysis of paraffin-embedded human breast cancer tissue slide using 10427-2-AP (Calnexin antibody) at dilution of 1:200 (under 10x lens. Heat mediated antigen retrieval with Tris-EDTA buffer (pH 9.0).



Immunohistochemical analysis of paraffin-embedded human breast cancer tissue slide using 10427-2-AP (Calnexin antibody) at dilution of 1:200 (under 10x lens. Heat mediated antigen retrieval with Tris-EDTA buffer (pH 9.0).