

À des fins de recherche uniquement

Anticorps Polyclonal de lapin anti-SMAD1



Numéro de catalogue: 10429-1-AP

22 Publications

Informations de base

Numéro de catalogue:

10429-1-AP

Taille:

150ul, Concentration: 850 µg/ml by Nanodrop;

Hôte:

Lapin

Isotype:

IgG

Immunogen Catalog Number:

AG0701

Numéro d'acquisition GenBank:

BC001878

Identification du gène (NCBI):

4086

Nom complet:

SMAD family member 1

MW calculé

52 kDa

MW observés:

52 kDa

Méthode de purification:

Purification par affinité contre l'antigène

Dilutions recommandées:

WB 1:1000-1:8000

IP 0.5-4.0 µg for IP and 1:500-1:1000 for WB

IF 1:10-1:100

Applications

Applications testées:

IF, IP, WB, ELISA

Demandes citées:

WB

Spécificité de l'espèce:

Humain, souris

Espèces citées:

Humain, rat, souris

Contrôles positifs:

WB : cellules HT-1080, cellules HeLa, cellules HepG2, tissu cardiaque de souris

IP : tissu cardiaque de souris,

IF : cellules HeLa, cellules HepG2

Informations générales

Transforming growth factor- β (TGF- β) superfamily is recognized as one of the largest families of secreted multifunctional peptides exerting different biological effects on a large variety of cell types, such as regulation of hormone secretion, stimulation of extracellular matrix formation, the inhibition of proliferation of many cell types, cell survival, bone formation, and chemotaxis for inflammatory cells. One of the most important proteins that modulate TGF- β ligand activity is the SMAD family proteins. SMAD1 is one of the receptor-activated Smads. It's also a signal transducers of BMP signaling and binds to several proteins involved in ubiquitin-proteasome system (UPS). Transcriptional modulator activated by BMP (bone morphogenetic proteins) type 1 receptor kinase

Publications notables

Autrice	Pubmed ID	Journal	Application
Xiangrong Cui	28983616	Mol Med Rep	WB
Xueni Wang	32879393	Sci Rep	WB
Tianmiao Huang	34743989	Biochim Biophys Acta Gen Subj	WB

Stockage

Stockage:

Stocker à -20°C. Stable pendant un an après l'expédition.

Tampon de stockage:

PBS avec azoture de sodium à 0,02 % et glycérol à 50 % pH 7,3

L'aliquotage n'est pas nécessaire pour le stockage à -20C

*** Les 20ul contiennent 0,1% de BSA.

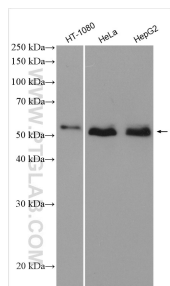
For technical support and original validation data for this product please contact:

T: 1 (888) 4PTGLAB (1-888-478-4522) (toll free in USA), or 1(312) 455-8498 (outside USA)

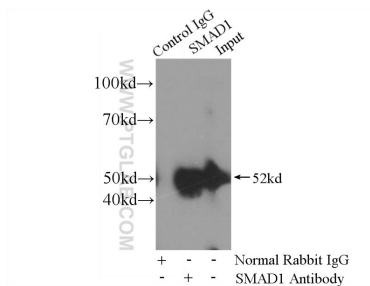
E: proteintech@ptglab.com
W: ptglab.com

This product is exclusively available under Proteintech Group brand and is not available to purchase from any other manufacturer.

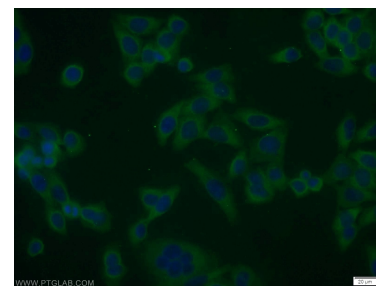
Données de validation sélectionnées



Various lysates were subjected to SDS PAGE followed by western blot with 10429-1-AP (SMAD1 antibody) at dilution of 1:4000 incubated at room temperature for 1.5 hours.



IP Result of anti-SMAD1 (IP:10429-1-AP, 4ug; Detection:10429-1-AP 1:500) with mouse heart tissue lysate 8000ug.



Immunofluorescent analysis of HeLa cells using 10429-1-AP (SMAD1 antibody) at dilution of 1:25 and Alexa Fluor 488-conjugated AffiniPure Goat Anti-Rabbit IgG(H+L).