

À des fins de recherche uniquement

# Anticorps Polyclonal de lapin anti-DIABLO



Numéro de catalogue: 10434-1-AP

Phare

12 Publications

## Informations de base

Numéro de catalogue:

10434-1-AP

Taille:

150ul, Concentration: 400 µg/ml by Nanodrop and 267 µg/ml by Bradford method using BSA as the standard;

Hôte:

Lapin

Isotype:

IgG

Immunogen Catalog Number:

AG0696

Numéro d'acquisition GenBank:

BC011909

Identification du gène (NCBI):

56616

Nom complet:

diablo homolog (*Drosophila*)

MW calculé

27 kDa

MW observés:

20 kDa

Méthode de purification:

Purification par affinité contre l'antigène

Dilutions recommandées:

WB 1:2000-1:16000

IP 0.5-4.0 ug for IP and 1:1000-1:4000 for WB

IHC 1:20-1:200

IF 1:50-1:500

## Applications

Applications testées:

FC, IF, IHC, IP, WB, ELISA

Demandes citées:

IF, IHC, WB

Spécificité de l'espèce:

Humain, rat, souris

Espèces citées:

Humain, rat, souris, Hamster

**Remarque-IHC: il est suggéré de démasquer l'antigène avec un tampon de TE buffer pH 9,0; (\*) A défaut, le démasquage de l'antigène peut être effectué avec un tampon citrate pH 6,0.**

Contrôles positifs:

WB : cellules HEK-293, cellules HeLa, cellules HepG2, tissu testiculaire de rat, tissu testiculaire de souris

IP : cellules HepG2,

IHC : tissu testiculaire humain,

IF : cellules HeLa,

## Informations générales

DIABLO, also named as SMAC, promotes apoptosis by activating caspases in the cytochrome c/Apaf-1/caspase-9 pathway. DIABLO inhibits the activity of BIRC6/bruce by inhibiting its binding to caspases. This antibody recognizes all the three isoforms (27 kDa and 22 kDa) of DIABLO. The highest expression was in the testis, adrenal gland, and ears.

## Publications notables

Autrice	Pubmed ID	Journal	Application
Hongtao Duan	29151915	Oncol Lett	WB
Tao Zhang	30187480	J Cell Physiol	WB
Yucong Xue	33173965	Mol Med Rep	IHC

## Stockage

Stockage:

Stocker à -20°C. Stable pendant un an après l'expédition.

Tampon de stockage:

PBS avec azoture de sodium à 0,02 % et glycérol à 50 % pH 7,3

L'aliquotage n'est pas nécessaire pour le stockage à -20C

\*\*\* Les 20ul contiennent 0,1% de BSA.

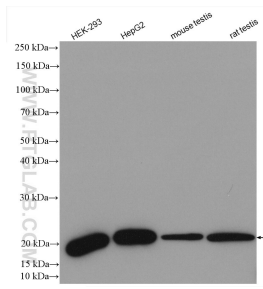
For technical support and original validation data for this product please contact:

T: 1 (888) 4PTGLAB (1-888-478-4522) (toll free in USA), or 1(312) 455-8498 (outside USA)

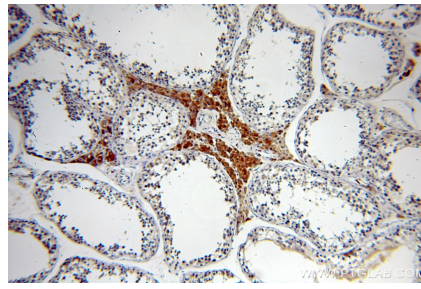
E: [proteintech@ptglab.com](mailto:proteintech@ptglab.com)  
W: [ptglab.com](http://ptglab.com)

This product is exclusively available under Proteintech Group brand and is not available to purchase from any other manufacturer.

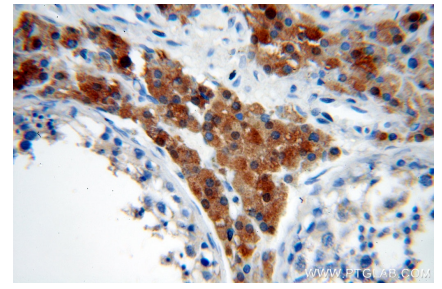
## Données de validation sélectionnées



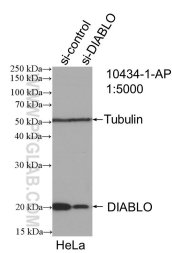
Various lysates were subjected to SDS PAGE followed by western blot with 10434-1-AP (DIABLO antibody) at dilution of 1:8000 incubated at room temperature for 1.5 hours.



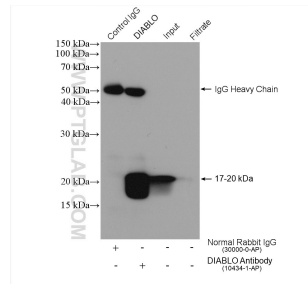
Immunohistochemical analysis of paraffin-embedded human testis using 10434-1-AP (DIABLO antibody) at dilution of 1:50 (under 10x lens).



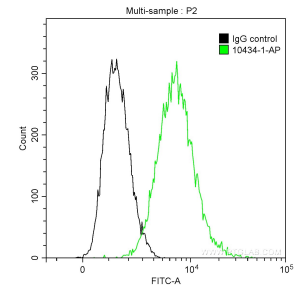
Immunohistochemical analysis of paraffin-embedded human testis using 10434-1-AP (DIABLO antibody) at dilution of 1:50 (under 40x lens).



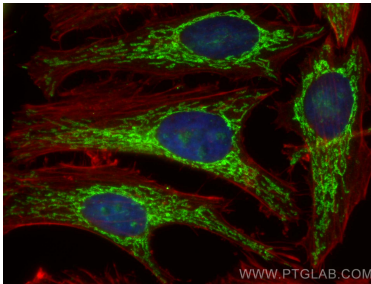
WB result of DIABLO antibody (10434-1-AP; 1:5000; incubated at room temperature for 1.5 hours) with sh-Control and sh-DIABLO transfected HeLa cells.



IP result of anti-DIABLO (IP:10434-1-AP, 4ug; Detection:10434-1-AP 1:2000) with HepG2 cells lysate 880 ug.



$1 \times 10^6$  Jurkat cells were intracellularly stained with 0.2 ug Anti-Human DIABLO (10434-1-AP) and CoraLite®488-Conjugated AffiniPure Goat Anti-Rabbit IgG(H+L) at dilution 1:1000 (green), and 0.2 ug Control Antibody. Cells were fixed with 90% MeOH.



Immunofluorescent analysis of (4% PFA) fixed HeLa cells using DIABLO antibody (10434-1-AP) at dilution of 1:200 and CoraLite®488-Conjugated AffiniPure Goat Anti-Rabbit IgG(H+L), CL594-Phalloidin (red).