

À des fins de recherche uniquement

Anticorps Polyclonal de lapin anti-BAD



Numéro de catalogue: 10435-1-AP

80 Publications

Informations de base

Numéro de catalogue: 10435-1-AP	Numéro d'acquisition GenBank: BC001901	Méthode de purification: Purification par affinité contre l'antigène
Taille: 150ul , Concentration: 387 µg/ml by Nanodrop and 387 µg/ml by Bradford method using BSA as the standard;	Identification du gène (NCBI): 572	Dilutions recommandées: WB 1:500-1:3000 IHC 1:100-1:500
Hôte: Lapin	Nom complet: BCL2-associated agonist of cell death	
Isotype: IgG	MW calculé 18 kDa	
Immunogen Catalog Number: AG0688	MW observés: 18-25 kDa	

Applications

Applications testées:

FC, IHC, WB, ELISA

Demandes citées:

IHC, WB

Spécificité de l'espèce:

Humain

Espèces citées:

Humain, rat

Remarque-IHC: il est suggéré de démasquer l'antigène avec un tampon de TE buffer pH 9,0; (*) A défaut, 'le démasquage de l'antigène peut être effectué avec un tampon citrate pH 6,0.

Contrôles positifs:

WB : cellules HeLa, cellules HepG2, cellules Jurkat, cellules Neuro-2a

IHC : tissu d'hyperplasie de la prostate humaine, tissu de cancer de la prostate humaine, tissu de lymphome humaine, tissu hépatique de souris

Informations générales

BAD, also named as BBC6 and BCL2L8, promotes cell death. It successfully competes for the binding to Bcl-X(L), Bcl-2 and Bcl-W, thereby affecting the level of heterodimerization of these proteins with BAX. BAD can reverse the death repressor activity of Bcl-X(L), but not that of Bcl-2. It appears to act as a link between growth factor receptor signaling and the apoptotic pathways.

Publications notables

Autrice	Pubmed ID	Journal	Application
Yanan Li	27663303	BMC Microbiol	WB
Xuan Zhou	36150222	Chemosphere	WB
Minjing Li	31546831	Biomolecules	WB

Stockage

Stockage:

Stocker à -20°C. Stable pendant un an après l'expédition.

Tampon de stockage:

PBS avec azoture de sodium à 0,02 % et glycérol à 50 % pH 7,3

L'aliquotage n'est pas nécessaire pour le stockage à -20C

*** Les 20ul contiennent 0,1% de BSA.

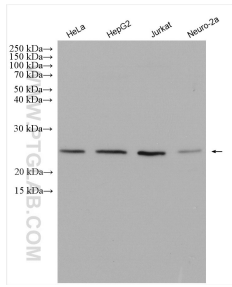
For technical support and original validation data for this product please contact:

T: 1 (888) 4PTGLAB (1-888-478-4522) (toll free in USA), or 1(312) 455-8498 (outside USA)

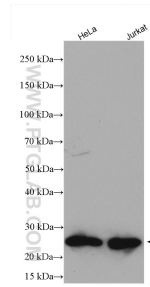
E: proteintech@ptglab.com
W: ptglab.com

This product is exclusively available under Proteintech Group brand and is not available to purchase from any other manufacturer.

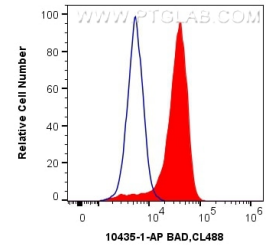
Données de validation sélectionnées



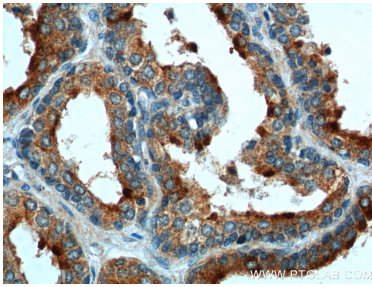
Various lysates were subjected to SDS PAGE followed by western blot with 10435-1-AP (BAD antibody) at dilution of 1:1500 incubated at room temperature for 1.5 hours.



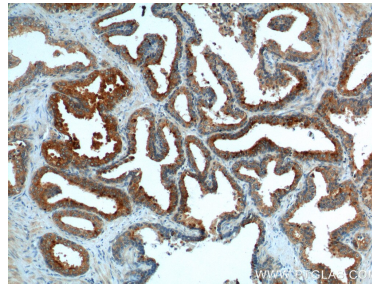
Various lysates were subjected to SDS PAGE followed by western blot with 10435-1-AP (BAD antibody) at dilution of 1:1000 incubated at room temperature for 1.5 hours.



1X10⁶ Jurkat cells were intracellularly stained with 0.4 ug Anti-Human BAD (10435-1-AP) and CoraLite@488-Conjugated AffiniPure Goat Anti-Rabbit IgG(H+L) at dilution 1:1000 (red), or 0.4 ug Isotype Control. Cells were fixed with 4% PFA and permeabilized with Flow Cytometry Perm Buffer (PF00011-C).



Immunohistochemical analysis of paraffin-embedded human prostate hyperplasia tissue slide using 10435-1-AP (BAD Antibody) at dilution of 1:200 (under 40x lens).



Immunohistochemical analysis of paraffin-embedded human prostate hyperplasia tissue slide using 10435-1-AP (BAD Antibody) at dilution of 1:200 (under 10x lens).