

À des fins de recherche uniquement

# Anticorps Polyclonal de lapin anti-CLTB



Numéro de catalogue: 10455-1-AP

Phare

3 Publications

## Informations de base

Numéro de catalogue:  
10455-1-AP

Taille:  
150ul, Concentration: 1000 µg/ml by  
Nanodrop and 300 µg/ml by Bradford  
method using BSA as the standard;

Hôte:  
Lapin

Isotype:  
IgG

Immunogen Catalog Number:  
AG0707

Numéro d'acquisition GenBank:  
BC006457

Identification du gène (NCBI):

1212  
Nom complet:  
clathrin, light chain (Lcb)

MW calculé  
23 kDa

MW observés:  
32-38 kDa

Méthode de purification:  
Purification par affinité contre  
l'antigène

Dilutions recommandées:  
WB 1:500-1:2000  
IP 0.5-4.0 ug for IP and 1:500-1:1000  
for WB  
IF 1:50-1:500

## Applications

Applications testées:  
IF, IP, WB, ELISA

Demandes citées:  
WB

Spécificité de l'espèce:  
Humain, rat, souris

Espèces citées:  
Humain, souris

Contrôles positifs:

WB : tissu de thymus de souris, cellules PC-3, tissu  
cérébral de souris, tissu cérébral humain

IP : tissu cérébral de souris,

IF : cellules HeLa, cellules HEK-293

## Informations générales

Clathrin is the major protein of the polyhedral coat of coated pits and vesicles which entrap specific macromolecules during receptor-mediated endocytosis. The clathrin molecule has a triskelion shape. Each clathrin triskelion is composed of three identical heavy chains (180 kDa) and three light chains of two types, LCA (CLTA) and LCB (CLTB) (30-40 kDa). The light chain subunits are thought to regulate the formation or disassembly of clathrin coats. (PMID: 2445759; 8374173; 3563513)

## Publications notables

Autrice	Pubmed ID	Journal	Application
Lisa Redlingshöfer	32907943	Proc Natl Acad Sci U S A	WB
Hongyun Liu	35862701	J Virol	WB
Shuang Wu	27540116	Proc Natl Acad Sci U S A	WB

## Stockage

Stockage:

Stocker à -20°C. Stable pendant un an après l'expédition.

Tampon de stockage:

PBS avec azoture de sodium à 0,02 % et glycérol à 50 % pH 7,3

L'aliquotage n'est pas nécessaire pour le stockage à -20C

\*\*\* Les 20ul contiennent 0,1% de BSA.

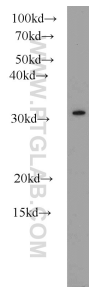
For technical support and original validation data for this product please contact:

T: 1 (888) 4PTGLAB (1-888-478-4522) (toll free  
in USA), or 1(312) 455-8498 (outside USA)

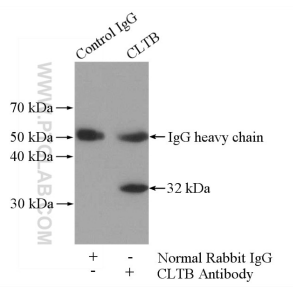
E: proteintech@ptglab.com  
W: ptglab.com

This product is exclusively available under Proteintech Group brand and is not available to purchase from any other manufacturer.

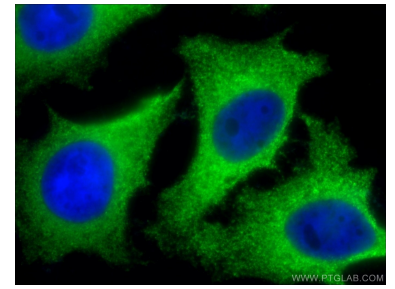
## Données de validation sélectionnées



mouse thymus tissue were subjected to SDS PAGE followed by western blot with 10455-1-AP (CLTB antibody) at dilution of 1:1000 incubated at room temperature for 1.5 hours.



IP Result of anti-CLTB (IP:10455-1-AP, 4ug; Detection:10455-1-AP 1:500) with mouse brain tissue lysate 4000ug.



Immunofluorescent analysis of (10% Formaldehyde) fixed HeLa cells using 10455-1-AP (CLTB antibody) at dilution of 1:100 and Alexa Fluor 488-conjugated AffiniPure Goat Anti-Rabbit IgG(H+L).