

À des fins de recherche uniquement

# Anticorps Polyclonal de lapin anti-NELF-A



Numéro de catalogue: 10456-1-AP

Phare

4 Publications

## Informations de base

Numéro de catalogue:

10456-1-AP

Taille:

150ul, Concentration: 700 µg/ml by Nanodrop;

Hôte:

Lapin

Isotype:

IgG

Immunogen Catalog Number:

AG0708

Numéro d'acquisition GenBank:

BC002764

Identification du gène (NCBI):

7469

Nom complet:

Wolf-Hirschhorn syndrome candidate 2

MW calculé

57 kDa

MW observés:

57 kDa

Méthode de purification:

Purification par affinité contre l'antigène

Dilutions recommandées:

WB 1:500-1:2000

IP 0.5-4.0 ug for IP and 1:500-1:1000 for WB

IF 1:10-1:100

## Applications

Applications testées:

IF, IP, WB, ELISA

Demandes citées:

WB

Spécificité de l'espèce:

Humain, souris

Espèces citées:

Humain, souris

Contrôles positifs:

WB : cellules HeLa, cellules Jurkat, tissu cérébral de souris, tissu hépatique de souris

IP : tissu cérébral de souris,

IF : cellules HeLa,

## Informations générales

WHSC2, also known as NELF-A, is a component of the Negative ELongation Factor complex, which inhibits RNA polymerase II progression early during elongation (a process referred to as 'promoter proximal pausing'), thereby altering expression of its target genes in a positive and negative manner [PMID:19245807]. This complex acts with DRB sensitivity-inducing factor (DSIF), a heterodimer of SPT4 and SPT5, to cause transcriptional pausing of RNA polymerase II [PMID:12612062].

## Publications notables

Autrice	Pubmed ID	Journal	Application
Seina Ohe	36463234	Nat Commun	WB
Yuki Aoi	34480849	Mol Cell	
Xiaodong Lu	27353326	Nucleic Acids Res	WB

## Stockage

Stockage:

Stocker à -20°C. Stable pendant un an après l'expédition.

Tampon de stockage:

PBS avec azoture de sodium à 0,02 % et glycérol à 50 % pH 7,3

L'aliquotage n'est pas nécessaire pour le stockage à -20C

\*\*\* Les 20ul contiennent 0,1% de BSA.

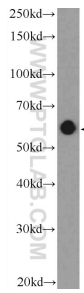
For technical support and original validation data for this product please contact:

T: 1 (888) 4PTGLAB (1-888-478-4522) (toll free in USA), or 1(312) 455-8498 (outside USA)

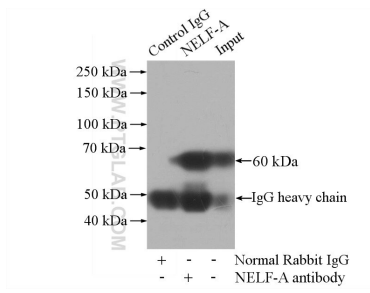
E: proteintech@ptglab.com  
W: ptglab.com

This product is exclusively available under Proteintech Group brand and is not available to purchase from any other manufacturer.

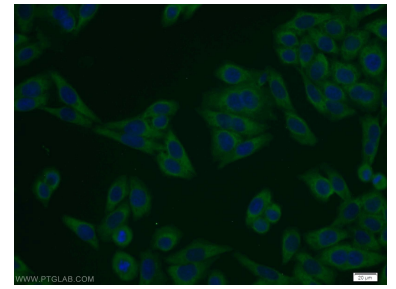
## Données de validation sélectionnées



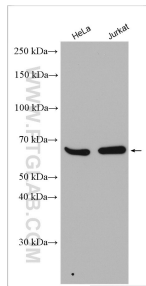
HeLa cells were subjected to SDS PAGE followed by western blot with 10456-1-AP (NELF-A Antibody) at dilution of 1:1000 incubated at room temperature for 1.5 hours.



IP Result of anti-NELF-A (IP:10456-1-AP, 4ug; Detection:10456-1-AP 1:500) with mouse brain tissue lysate 3440ug.



Immunofluorescent analysis of HeLa cells using 10456-1-AP (NELF-A antibody) at dilution of 1:25 and Alexa Fluor 488-conjugated AffiniPure Goat Anti-Rabbit IgG(H+L).



Various lysates were subjected to SDS PAGE followed by western blot with 10456-1-AP (NELF-A antibody) at dilution of 1:8000 incubated at room temperature for 1.5 hours.