

À des fins de recherche uniquement

Anticorps Polyclonal de lapin anti-CLINT1



Numéro de catalogue: 10470-1-AP

Informations de base

Numéro de catalogue:
10470-1-AP

Taille:
150ul, Concentration: 600 µg/ml by
Nanodrop and 347 µg/ml by Bradford
method using BSA as the standard;

Hôte:
Lapin

Isotype:
IgG

Immunogen Catalog Number:
AG0754

Numéro d'acquisition GenBank:
BC004467

Identification du gène (NCBI):
9685

Nom complet:
clathrin interactor 1

MW calculé
68 kDa

MW observés:
68 kDa, 80 kDa

Méthode de purification:
Purification par affinité contre
l'antigène

Dilutions recommandées:
WB 1:500-1:2000
IP 0.5-4.0 ug for IP and 1:500-1:2000
for WB
IHC 1:50-1:500
IF 1:10-1:100

Applications

Applications testées:
FC, IF, IHC, IP, WB, ELISA

Spécificité de l'espèce:
Humain, rat, souris

**Remarque-IHC: il est suggéré de démasquer
l'antigène avec un tampon de TE buffer pH
9.0; (*) À défaut, 'le démasquage de
l'antigène peut être 'effectué avec un
tampon citrate pH 6,0.**

Contrôles positifs:

WB : cellules HeLa, cellules HEK-293, cellules HepG2,
tissu cérébral de souris

IP : cellules HeLa,

IHC : tissu de cancer du sein humain,

IF : cellules HepG2,

Informations générales

Clathrin interactor 1 (CLINT1), also known as enthoprotin or epsin-4, belongs to the epsin family of endocytic adapter proteins. CLINT1 interacts with clathrin, the adapter protein AP-1 and phosphoinositides. It may have a role in the formation of clathrin coated vesicles and trafficking between the trans-Golgi network and endosomes. Mutations in the gene of CLINT1 are associated with a susceptibility to schizophrenia and psychotic disorders. Calculated molecular weight of CLINT1 is 68 kDa. The migration of endogenous CLINT1 at 80 kDa has also been reported (PMID: 12213833; 15811338).

Stockage

Stockage:

Stocker à -20°C. Stable pendant un an après l'expédition.

Tampon de stockage:

PBS avec azoture de sodium à 0,02 % et glycérol à 50 % pH 7,3

L'aliquotage n'est pas nécessaire pour le stockage à -20C

*** Les 20ul contiennent 0,1% de BSA.

For technical support and original validation data for this product please contact:

T: 1 (888) 4PTGLAB (1-888-478-4522) (toll free
in USA), or 1(312) 455-8498 (outside USA)

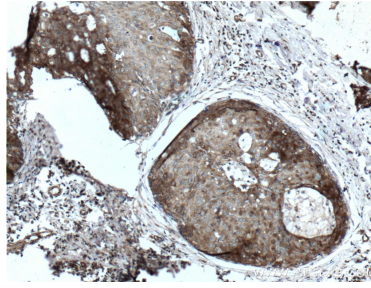
E: proteintech@ptglab.com
W: ptglab.com

This product is exclusively available under Proteintech Group brand and is not available to purchase from any other manufacturer.

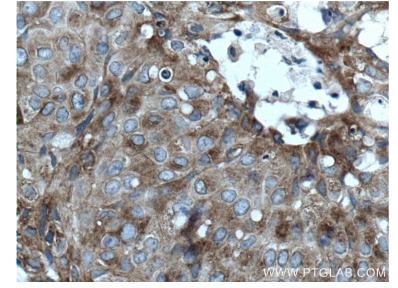
Données de validation sélectionnées



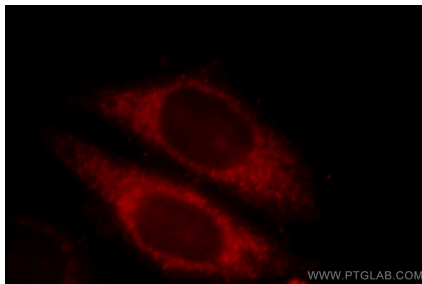
HeLa cells were subjected to SDS PAGE followed by western blot with 10470-1-AP (CLINT1 antibody) at dilution of 1:1000 incubated at room temperature for 1.5 hours.



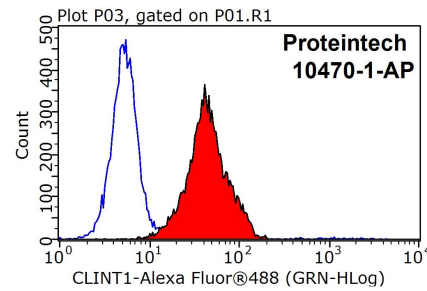
Immunohistochemical analysis of paraffin-embedded human breast cancer tissue slide using 10470-1-AP (CLINT1 Antibody) at dilution of 1:200 (under 10x lens). Heat mediated antigen retrieval with Tris-EDTA buffer (pH 9.0).



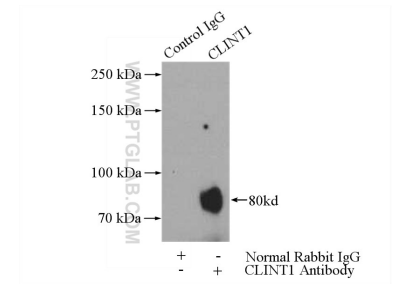
Immunohistochemical analysis of paraffin-embedded human breast cancer tissue slide using 10470-1-AP (CLINT1 Antibody) at dilution of 1:200 (under 40x lens). Heat mediated antigen retrieval with Tris-EDTA buffer (pH 9.0).



Immunofluorescent analysis of HepG2 cells, using CLINT1 antibody 10470-1-AP at 1:25 dilution and Rhodamine-labeled goat anti-rabbit IgG (red).



1×10^6 HepG2 cells were stained with 0.2 μ g CLINT1 antibody (10470-1-AP, red) and control antibody (blue). Fixed with 90% MeOH blocked with 3% BSA (30 min). Alexa Fluor 488-conjugated AffiniPure Goat Anti-Rabbit IgG(H+L) with dilution 1:1000.



IP Result of anti-CLINT1 (IP:10470-1-AP, 4 μ g; Detection:10470-1-AP 1:1000) with HeLa cells lysate 2800 μ g.