

À des fins de recherche uniquement

Anticorps Polyclonal de lapin anti-transgeline/SM22



Numéro de catalogue: 10493-1-AP

Phare

100 Publications

Informations de base

Numéro de catalogue:
10493-1-AP

Taille:
150ul, Concentration: 750 µg/ml by Nanodrop and 227 µg/ml by Bradford method using BSA as the standard;

Hôte:
Lapin

Isotype:
IgG

Immunogen Catalog Number:
AG0764

Numéro d'acquisition GenBank:
BC004927

Identification du gène (NCBI):
6876

Nom complet:
transgeline

MW calculé
22 kDa

MW observés:
19-22 kDa

Méthode de purification:
Purification par affinité contre l'antigène

Dilutions recommandées:
WB 1:5000-1:50000
IHC 1:50-1:500
IF 1:200-1:800

Applications

Applications testées:
IF, IHC, WB, ELISA

Demandes citées:
FC, IF, IHC, WB

Spécificité de l'espèce:
Humain, rat, souris

Espèces citées:
canin, Humain, rat, souris

Remarque-IHC: il est suggéré de démasquer l'antigène avec un tampon de TE buffer pH 9,0; (*) À défaut, le démasquage de l'antigène peut être effectué avec un tampon citrate pH 6,0.

Contrôles positifs:

WB : tissu de côlon de souris, cellules Caco-2, tissu de côlon de rat, tissu de côlon humain, tissu d'estomac de souris

IHC : tissu cardiaque de souris, tissu cardiaque humain, tissu de cancer du côlon humain

IF : tissu cardiaque de souris,

Informations générales

The transgeline family is a group of proteins that belong to 22kd actin-related calponin superfamily. Of all three isoforms, transgeline 1 is the best characterized. Transgeline 1, also known as SM22alpha, is a specific marker for differentiated smooth muscle cells. Transgeline 2, also known as SM22 beta, is expressed by both smooth muscle and non-smooth muscle cells in a temporally and spatially regulated pattern. Transgeline 3, also known as NP25, is only found in highly differentiated neuronal cells. This antibody was generated against full length transgeline 1 protein. It can cross-react with other two transgelins based on the sequence similarity.

Publications notables

Autrice	Pubmed ID	Journal	Application
Zhuqing Li	34607159	Redox Biol	IF
Yan Yan	36068532	Reprod Biol Endocrinol	IHC,IF
Tao Li	31499136	Neurosci Lett	WB

Stockage

Stockage:

Stocker à -20°C. Stable pendant un an après l'expédition.

Tampon de stockage:

PBS avec azoture de sodium à 0,02 % et glycérol à 50 % pH 7,3

L'aliquotage n'est pas nécessaire pour le stockage à -20C

*** Les 20ul contiennent 0,1% de BSA.

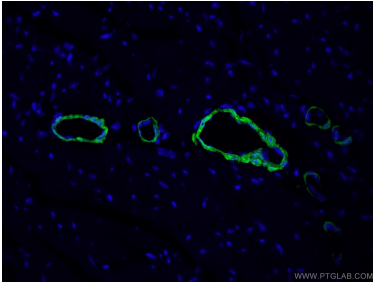
For technical support and original validation data for this product please contact:

T: 1 (888) 4PTGLAB (1-888-478-4522) (toll free in USA), or 1(312) 455-8498 (outside USA)

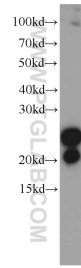
E: proteintech@ptglab.com
W: ptglab.com

This product is exclusively available under Proteintech Group brand and is not available to purchase from any other manufacturer.

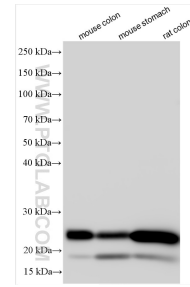
Données de validation sélectionnées



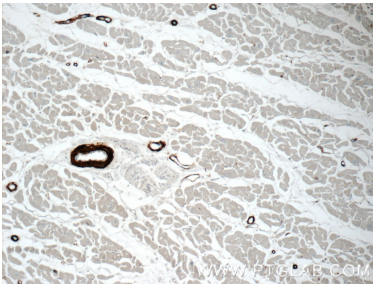
Immunofluorescent analysis of (4% PFA) fixed mouse heart tissue using 10493-1-AP (transgelin/SM22 antibody) at dilution of 1:50 and Alexa Fluor 488-Conjugated AffiniPure Goat Anti-Rabbit IgG(H+L).



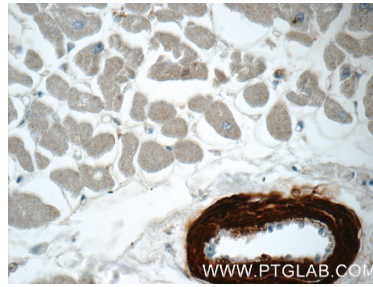
mouse colon tissue were subjected to SDS PAGE followed by western blot with 10493-1-AP (transgelin/SM22 antibody) at dilution of 1:1000 incubated at room temperature for 1.5 hours.



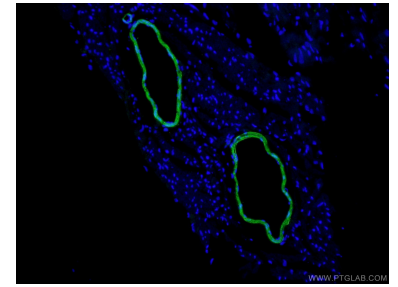
Various lysates were subjected to SDS PAGE followed by western blot with 10493-1-AP (transgelin/SM22 antibody) at dilution of 1:10000 incubated at room temperature for 1.5 hours.



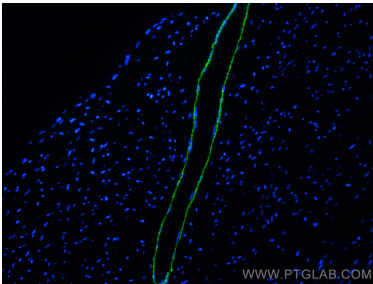
Immunohistochemical analysis of paraffin-embedded human heart tissue slide using 10493-1-AP (transgelin/SM22 antibody) at dilution of 1:50 (under 10x lens).



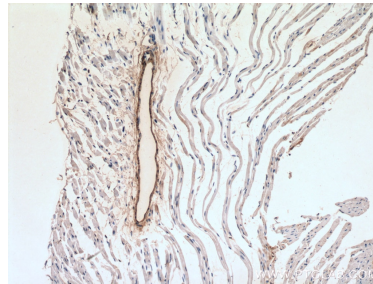
Immunohistochemical analysis of paraffin-embedded human heart tissue slide using 10493-1-AP (transgelin/SM22 antibody) at dilution of 1:50 (under 40x lens).



Immunofluorescent analysis of (4% PFA) fixed mouse heart tissue using 10493-1-AP (transgelin/SM22 antibody) at dilution of 1:50 and Alexa Fluor 488-conjugated AffiniPure Goat Anti-Rabbit IgG(H+L).



Immunofluorescent analysis of (4% PFA) fixed mouse heart tissue using transgelin/SM22 antibody (10493-1-AP) at dilution of 1:400 and CoraLite®488-Conjugated AffiniPure Goat Anti-Rabbit IgG(H+L).



Immunohistochemical analysis of paraffin-embedded mouse heart tissue slide using 10493-1-AP (transgelin/SM22 antibody) at dilution of 1:200 (under 10x lens. Heat mediated antigen retrieval with Tris-EDTA buffer (pH 9.0).