

À des fins de recherche uniquement

# Anticorps Polyclonal de lapin anti-GAPDH



Numéro de catalogue: 10494-1-AP

5141 Publications

## Informations de base

Numéro de catalogue:

10494-1-AP

Taille:

150ul, Concentration: 333 µg/ml by Bradford method using BSA as the standard;

Hôte:

Lapin

Isotype:

IgG

Immunogen Catalog Number:

AG0766

Numéro d'acquisition GenBank:

BC004109

Identification du gène (NCBI):

2597

Nom complet:

glyceraldehyde-3-phosphate dehydrogenase

MW calculé

36 kDa

MW observés:

36 kDa

Méthode de purification:

Purification par affinité contre l'antigène

Dilutions recommandées:

WB 1:5000-1:40000

IP 0.5-4.0 µg for IP and 1:1000-1:6000 for WB

IHC 1:200-1:800

IF 1:500-1:2000

## Applications

Applications testées:

FC, IF, IHC, IP, WB, ELISA

Demandes citées:

CoIP, ELISA, IF, IHC, IP, RIP, WB

Spécificité de l'espèce:

chou, Humain, porc, rat, riz, souris, arabidopsis, maïs

Espèces citées:

Chèvre, Humain, levure, poulet, rat, arabidopsis

**Remarque-IHC: il est suggéré de démasquer l'antigène avec un tampon de TE buffer pH 9,0; (\*) A défaut, le démasquage de l'antigène peut être effectué avec un tampon citrate pH 6,0.**

Contrôles positifs:

WB : tissu placentaire humain, cellules C6, cellules HEK-293, cellules HeLa, cellules HepG2, cellules Jurkat, cellules K-562, cellules NIH/3T3, cellules PC-13, cellules Raji, cellules RAW 264.7, tissu cardiaque de souris, tissu cérébral de rat, tissu cérébral de souris, tissu cutané de souris, tissu végétal entier d'arabidopsis, tissu végétal entier de maïs

IP : cellules A549,

IHC : tissu de cancer du sein humain, tissu de cancer du poumon humain

IF : cellules HeLa, cellules HepG2

## Informations générales

Glyceraldehyde-3-phosphate dehydrogenase (GAPDH) catalyzes the phosphorylation of glyceraldehyde-3-phosphate during glycolysis. GAPDH participates in nuclear events including transcription, binding RNA, RNA transportation, DNA replication, DNA repair and apoptosis. Being stably and constitutively expressed at high levels in most tissues and cells, GAPDH is considered a housekeeping protein. It is widely used as a control for RT-PCR and also loading control in electrophoresis and Western blotting. GAPDH is normally expressed in cellular cytoplasm or membrane, but can occasionally translocate to the nucleus after the addition of post-translational modifications such as S-nitrosylation. This antibody is raised against full length GAPDH of human origin. It can recognize the 36 kDa GAPDH protein in most cells/tissues. In addition, a band below 36 kDa can always be detected as the isoform or spliced product of GAPDH (PMID: 23885286, 23877755, 19368702). Please note that some physiological factors, such as hypoxia and diabetes, increase GAPDH expression in certain cell types.

## Publications notables

Autrice	Pubmed ID	Journal	Application
Xin Xu	36178722	Environ Toxicol	WB
Xingxing Wang	36249810	Front Pharmacol	WB
Xin Wen	36249018	Front Oncol	WB

## Stockage

Stockage:

Stocker à -20°C. Stable pendant un an après l'expédition.

Tampon de stockage:

PBS avec azoture de sodium à 0,02 % et glycérol à 50 % pH 7,3

L'aliquotage n'est pas nécessaire pour le stockage à -20C

\*\*\* Les 20ul contiennent 0,1% de BSA

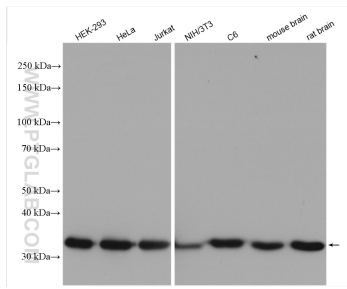
For technical support and original validation data for this product please contact:

T: 1 (888) 4PTGLAB (1-888-478-4522) (toll free in USA), or 1(312) 455-8498 (outside USA)

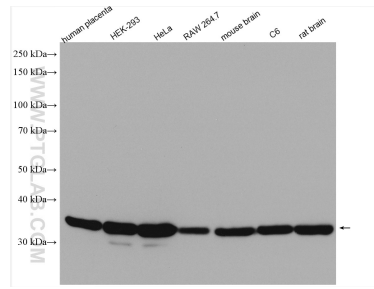
E: proteintech@ptglab.com  
W: ptglab.com

This product is exclusively available under Proteintech Group brand and is not available to purchase from any other manufacturer.

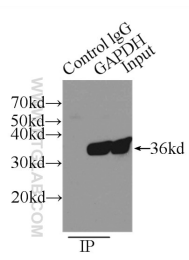
## Données de validation sélectionnées



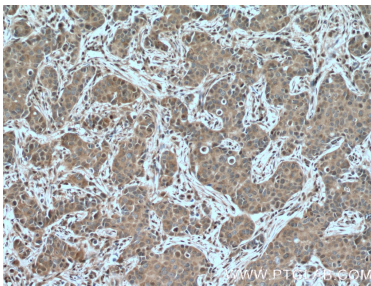
Various lysates were subjected to SDS PAGE followed by western blot with 10494-1-AP (GAPDH antibody) at dilution of 1:20000 incubated at room temperature for 1.5 hours.



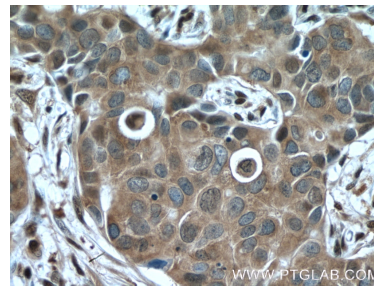
Various lysates were subjected to SDS PAGE followed by western blot with 10494-1-AP (GAPDH antibody) at dilution of 1:20000 incubated at room temperature for 1.5 hours.



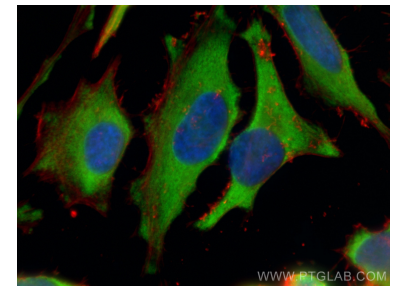
IP Result of anti-GAPDH (IP:10494-1-AP, 3ug; Detection:10494-1-AP 1:3000) with A549 cells lysate 3500ug.



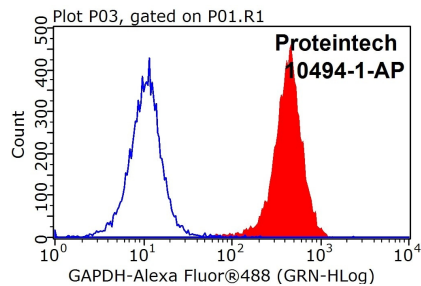
Immunohistochemical analysis of paraffin-embedded human breast cancer tissue slide using 10494-1-AP (GAPDH antibody) at dilution of 1:400 (under 10x lens). Heat mediated antigen retrieval with Tris-EDTA buffer (pH 9.0).



Immunohistochemical analysis of paraffin-embedded human breast cancer tissue slide using 10494-1-AP (GAPDH antibody) at dilution of 1:400 (under 40x lens). Heat mediated antigen retrieval with Tris-EDTA buffer (pH 9.0).



Immunofluorescent analysis of (-20°C Methanol) fixed HeLa cells using GAPDH antibody (10494-1-AP) at dilution of 1:1000 and CoraLite®488-Conjugated AffiniPure Goat Anti-Rabbit IgG(H+L), CoraLite®594 Beta Actin antibody (CL594-66009, Clone: 2D4H5, red).



1X10<sup>6</sup> HEK-293 cells were stained with .2ug GAPDH antibody (10494-1-AP, red) and control antibody (blue). Fixed with 90% MeOH blocked with 3% BSA (30 min). Alexa Fluor 488-Goat anti-Rabbit IgG with dilution 1:100.