

À des fins de recherche uniquement

# Anticorps Polyclonal de lapin anti-PIN1



Numéro de catalogue: 10495-1-AP

Phare

28 Publications

## Informations de base

Numéro de catalogue:

10495-1-AP

Taille:

150ul, Concentration: 600 µg/ml by Nanodrop;

Hôte:

Lapin

Isotype:

IgG

Immunogen Catalog Number:

AG0767

Numéro d'acquisition GenBank:

BC002899

Identification du gène (NCBI):

5300

Nom complet:

peptidylprolyl cis/trans isomerase, NIMA-interacting 1

MW calculé

18 kDa

MW observés:

18 kDa

Méthode de purification:

Purification par affinité contre l'antigène

Dilutions recommandées:

WB 1:2000-1:10000

IP 0.5-4.0 ug for IP and 1:500-1:1000 for WB

IHC 1:500-1:2000

IF 1:50-1:500

## Applications

Applications testées:

IF, IHC, IP, WB, ELISA

Demandes citées:

IF, IHC, IP, WB

Spécificité de l'espèce:

Humain, rat, souris

Espèces citées:

Humain, rat, souris

**Remarque-IHC: il est suggéré de démasquer l'antigène avec un tampon de TE buffer pH 9,0; (\*) À défaut, le démasquage de l'antigène peut être effectué avec un tampon citrate pH 6,0.**

Contrôles positifs:

WB : cellules A549, cellules HEK-293, cellules HeLa, cellules Jurkat, cellules NIH/3T3, cellules PC-12, tissu cérébral de rat, tissu cérébral de souris

IP : cellules HepG2,

IHC : tissu de cancer du pancréas humain, tissu de carcinome à cellules rénales humain

IF : cellules HEK-293, cellules NIH/3T3

## Informations générales

• PIN1 (Peptidyl-prolyl cis-trans isomerase NIMA-interacting 1) is essential for mitosis progression in yeast cells and is hypothesized to perform the same role in mammalian cells. It might regulate cellular processes distinct from the cell cycle itself, such as terminal differentiation through a modulation of differentiation-specific gene expression (PMID:20801874). It colocalizes with NEK6 in the nucleus. Pin1 inhibition simultaneously blocks multiple cancer pathways, disrupts the desmoplastic and immunosuppressive TME, and upregulates PD-L1 and ENT1, rendering pancreatic ductal adenocarcinoma (PDAC) eradicable by immunochemotherapy (PMID: 34388391).

## Publications notables

Autrice	Pubmed ID	Journal	Application
Di Wu	30246389	J Cell Physiol	IF
Linna Xie	30263006	Int J Biol Sci	WB
An-Ning Zhao	36250925	FASEB J	WB, IHC

## Stockage

Stockage:

Stocker à -20°C. Stable pendant un an après l'expédition.

Tampon de stockage:

PBS avec azoture de sodium à 0,02 % et glycérol à 50 % pH 7,3

L'aliquotage n'est pas nécessaire pour le stockage à -20C

\*\*\* Les 20ul contiennent 0,1% de BSA.

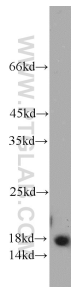
For technical support and original validation data for this product please contact:

T: 1 (888) 4PTGLAB (1-888-478-4522) (toll free in USA), or 1(312) 455-8498 (outside USA)

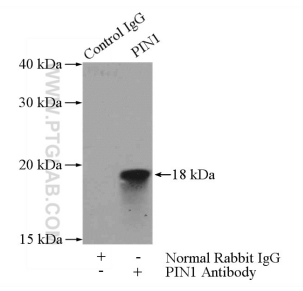
E: proteintech@ptglab.com  
W: ptglab.com

This product is exclusively available under Proteintech Group brand and is not available to purchase from any other manufacturer.

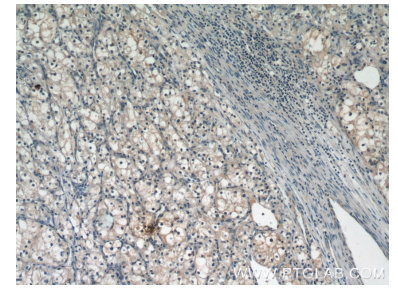
## Données de validation sélectionnées



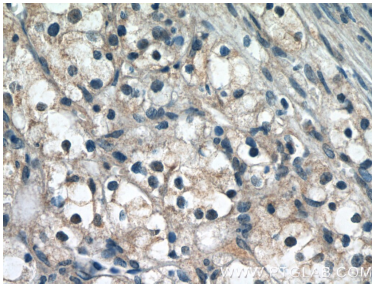
HEK-293 cells were subjected to SDS PAGE followed by western blot with 10495-1-AP (PIN1 antibody) at dilution of 1:1000 incubated at room temperature for 1.5 hours.



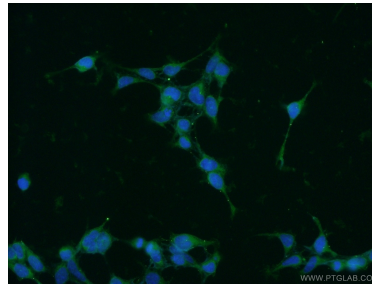
IP Result of anti-PIN1 (IP:10495-1-AP, 4ug; Detection:10495-1-AP 1:500) with HepG2 cells lysate 2400ug.



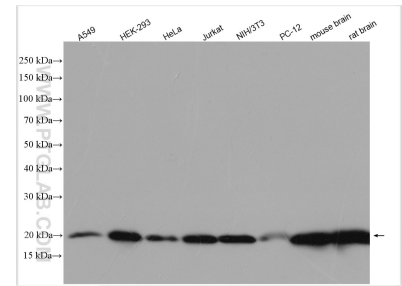
Immunohistochemical analysis of paraffin-embedded human renal cell carcinoma tissue slide using 10495-1-AP (PIN1 Antibody) at dilution of 1:50 (under 10x lens).



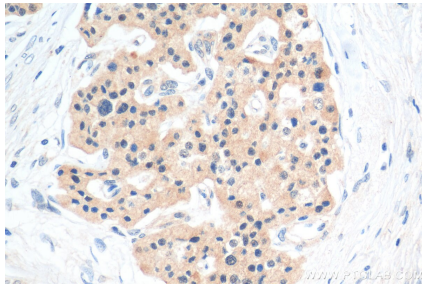
Immunohistochemical analysis of paraffin-embedded human renal cell carcinoma tissue slide using 10495-1-AP (PIN1 Antibody) at dilution of 1:50 (under 40x lens).



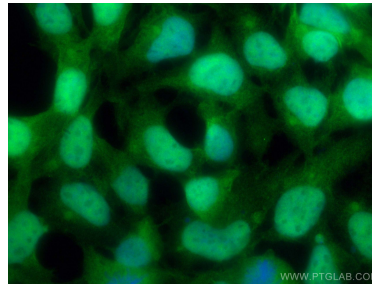
Immunofluorescent analysis of HEK-293 cells using 10495-1-AP (PIN1 antibody) at dilution of 1:50 and Alexa Fluor 488-conjugated AffiniPure Goat Anti-Rabbit IgG(H+L).



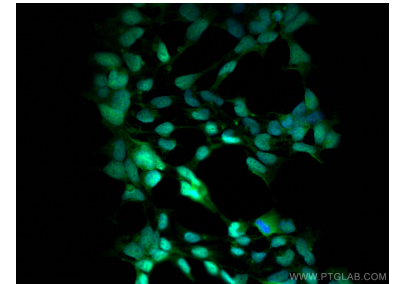
Various lysates were subjected to SDS PAGE followed by western blot with 10495-1-AP (PIN1 antibody) at dilution of 1:5000 incubated at room temperature for 1.5 hours.



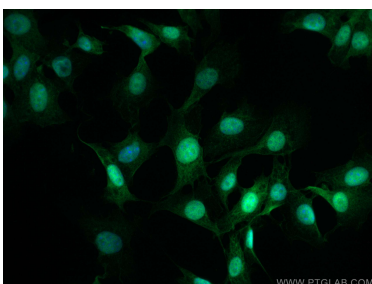
Immunohistochemical analysis of paraffin-embedded human pancreas cancer tissue slide using 10495-1-AP (PIN1 antibody) at dilution of 1:1000 (under 10x lens). Heat mediated antigen retrieval with Tris-EDTA buffer (pH 9.0).



Immunofluorescent analysis of (4% PFA) fixed HEK-293 cells using PIN1 antibody (10495-1-AP) at dilution of 1:200 and CoraLite@488-Conjugated AffiniPure Goat Anti-Rabbit IgG(H+L).



Immunofluorescent analysis of (4% PFA) fixed HEK-293 cells using PIN1 antibody (10495-1-AP) at dilution of 1:200 and CoraLite@488-Conjugated AffiniPure Goat Anti-Rabbit IgG(H+L).



Immunofluorescent analysis of (4% PFA) fixed NIH/3T3 cells using PIN1 antibody (10495-1-AP) at dilution of 1:200 and CoraLite®488-Conjugated AffiniPure Goat Anti-Rabbit IgG(H+L).