

À des fins de recherche uniquement

Anticorps Polyclonal de lapin anti-TFII



Numéro de catalogue: 10499-1-AP

2 Publications

Informations de base

Numéro de catalogue:
10499-1-AP

Taille:
150ul, Concentration: 500 µg/ml by
Nanodrop and 240 µg/ml by Bradford
method using BSA as the standard;

Hôte:
Lapin

Isotype:
IgG

Immunogen Catalog Number:
AG0773

Numéro d'acquisition GenBank:
BC004472

Identification du gène (NCBI):
2969

Nom complet:
general transcription factor II, i

MW calculé
112 kDa

MW observés:
135 kDa

Méthode de purification:
Purification par affinité contre
l'antigène

Dilutions recommandées:
WB 1:1000-1:8000
IHC 1:20-1:200
IF 1:50-1:500

Applications

Applications testées:
FC, IF, IHC, WB, ELISA

Demandes citées:
WB

Spécificité de l'espèce:
Humain, rat, souris

Espèces citées:
Humain, souris

**Remarque-IHC: il est suggéré de démasquer
l'antigène avec un tampon de TE buffer pH
9,0; (*) A défaut, 'le démasquage de
l'antigène peut être 'effectué avec un
tampon citrate pH 6,0.**

Contrôles positifs:

WB : cellules HEK-293, cellules HeLa, cellules Jurkat

IHC : tissu de tumeur ovarienne humain, tissu de
cancer du côlon humain

IF : cellules HeLa,

Informations générales

The GTF2I gene encodes a transcription factor. It negatively regulates agonist-induced calcium entry into cells by interfering with expression of the cation channel TRPC3 at the plasma membrane [PMID: 17023658]. As a transcription factor and/or as a regulator of intracellular calcium levels, GTF2I may play a role in the molecular basis of anxiety [PMID: 22578324]. It interacts with the basal transcription machinery by coordinating the formation of a multiprotein complex at the C-FOS promoter, and linking specific signal responsive activator complexes. Required for the formation of functional ARID3A DNA-binding complexes and for activation of immunoglobulin heavy-chain transcription upon B-lymphocyte activation [PMID: 16738337].

Publications notables

Autrice	Pubmed ID	Journal	Application
Jing Chen	34650978	Front Cell Dev Biol	WB
Qiang Wang	35978186	Nature	WB

Stockage

Stockage:

Stocker à -20°C. Stable pendant un an après l'expédition.

Tampon de stockage:

PBS avec azoture de sodium à 0,02 % et glycérol à 50 % pH 7,3

L'aliquotage n'est pas nécessaire pour le stockage à -20C

*** Les 20ul contiennent 0,1% de BSA.

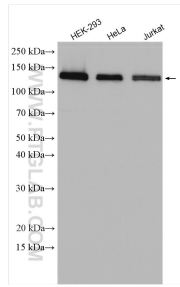
For technical support and original validation data for this product please contact:

T: 1 (888) 4PTGLAB (1-888-478-4522) (toll free
in USA), or 1(312) 455-8498 (outside USA)

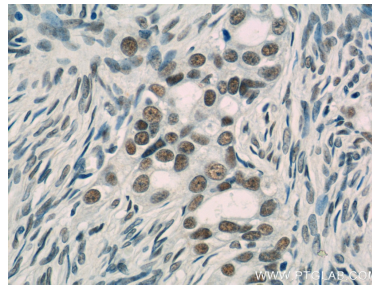
E: proteintech@ptglab.com
W: ptglab.com

This product is exclusively available under Proteintech Group brand and is not available to purchase from any other manufacturer.

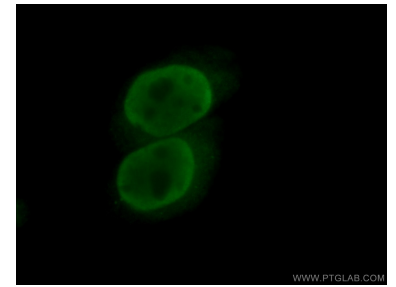
Données de validation sélectionnées



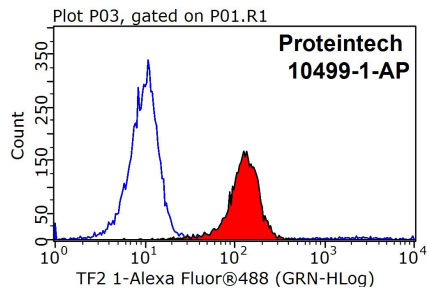
Various lysates were subjected to SDS PAGE followed by western blot with 10499-1-AP (TFII I antibody) at dilution of 1:4000 incubated at room temperature for 1.5 hours.



Immunohistochemical analysis of paraffin-embedded human ovary tumor tissue slide using 10499-1-AP (TFII I antibody) at dilution of 1:50 (under 40x lens).



Immunofluorescent analysis of (4% PFA) fixed HeLa cells using 10499-1-AP (TFII I antibody) at dilution of 1:50 and Alexa Fluor 488-conjugated AffiniPure Goat Anti-Rabbit IgG(H+L).



1×10^6 HeLa cells were stained with 0.2ug TFII I antibody (10499-1-AP, red) and control antibody (blue). Fixed with 90% MeOH blocked with 3% BSA (30 min). Alexa Fluor 488-conjugated AffiniPure Goat Anti-Rabbit IgG(H+L) with dilution 1:1000.