

À des fins de recherche uniquement

Anticorps Polyclonal de lapin anti-KEAP1



Numéro de catalogue: 10503-2-AP

Phare

505 Publications

Informations de base

Numéro de catalogue:

10503-2-AP

Taille:

150ul, Concentration: 600 µg/ml by Nanodrop;

Hôte:

Lapin

Isotype:

IgG

Immunogen Catalog Number:

AG0779

Numéro d'acquisition GenBank:

BC002930

Identification du gène (NCBI):

9817

Nom complet:

kelch-like ECH-associated protein 1

MW calculé

624 aa, 70 kDa

MW observés:

55-70 kDa

Méthode de purification:

Purification par affinité contre l'antigène

Dilutions recommandées:

WB 1:2000-1:10000

IP 0.5-4.0 ug for IP and 1:500-1:1000 for WB

IHC 1:50-1:500

IF 1:50-1:500

Applications

Applications testées:

IF, IHC, IP, WB, ELISA

Demandes citées:

CoIP, IF, IHC, IP, WB

Spécificité de l'espèce:

Humain, rat, souris

Espèces citées:

bovin, Humain, porc, poulet, rat, singe, souris

Remarque-IHC: il est suggéré de démasquer l'antigène avec un tampon de TE buffer pH 9,0; (*) À défaut, le démasquage de l'antigène peut être effectué avec un tampon citrate pH 6,0.

Contrôles positifs:

WB : cellules HEK-293, cellules HeLa, cellules HepG2, cellules Jurkat, cellules MCF-7

IP : tissu de muscle squelettique de souris,

IHC : tissu de cancer du poumon humain, tissu de cancer du sein humain, tissu de muscle squelettique humain

IF : cellules U2OS, cellules HepG2

Informations générales

KEAP1, also named as INRF2, KIAA0132 and KLHL19, is part of a multiprotein complex that contains the CUL3-ROC1 ubiquitin ligase, which can ubiquitinate the N-terminal domain of NRF2 [PMID: 20173742]. Two molecules of KEAP1 bind to two distinct sites in the N-terminal region of NRF2, the ETGE and DLG sites, which affect the KEAP1-NRF2 interaction and/or its physiological consequences [PMID: 22215675]. KEAP1 retains NFE2L2/NRF2 in the cytosol. It functions as substrate adapter protein for the E3 ubiquitin ligase complex formed by CUL3 and RBX1 [PMID: 20427290]. It also retains BPTF in the cytosol. This antibody is a rabbit polyclonal antibody raised against residues near the C terminus of human KEAP1.

Publications notables

Autrice	Pubmed ID	Journal	Application
Lin-Tao Xu	34601084	J Ethnopharmacol	WB
Zhenmao Jia	36238566	Front Pharmacol	WB
Taiwei Wang	36169181	Oncol Rep	WB

Stockage

Stockage:

Stocker à -20°C. Stable pendant un an après l'expédition.

Tampon de stockage:

PBS avec azoture de sodium à 0,02 % et glycérol à 50 % pH 7,3

L'aliquotage n'est pas nécessaire pour le stockage à -20C

*** Les 20ul contiennent 0,1% de BSA.

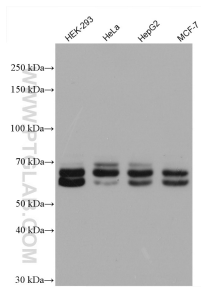
For technical support and original validation data for this product please contact:

T: 1 (888) 4PTGLAB (1-888-478-4522) (toll free in USA), or 1(312) 455-8498 (outside USA)

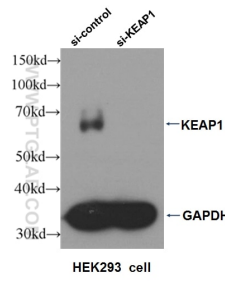
E: proteintech@ptglab.com
W: ptglab.com

This product is exclusively available under Proteintech Group brand and is not available to purchase from any other manufacturer.

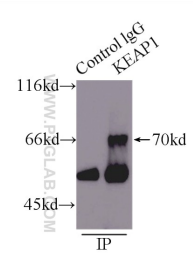
Données de validation sélectionnées



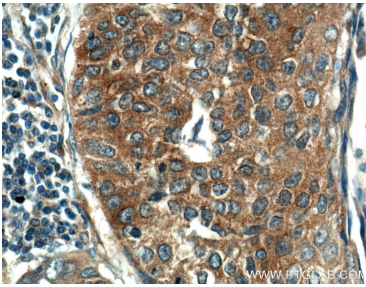
Various lysates were subjected to SDS PAGE followed by western blot with 10503-2-AP (KEAP1 antibody) at dilution of 1:5000 incubated at room temperature for 1.5 hours.



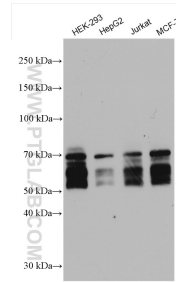
WB result of KEAP1 antibody (10503-2-AP, 1:2000) with si-control and si-KEAP1 transfected HEK293 cell.



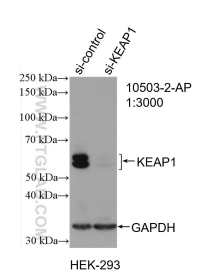
IP Result of anti-KEAP1 (IP:10503-2-AP, 5ug; Detection:10503-2-AP 1:600) with mouse skeletal muscle tissue lysate 8000ug.



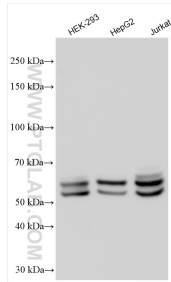
Immunohistochemical analysis of paraffin-embedded human lung cancer tissue slide using 10503-2-AP (KEAP1 Antibody) at dilution of 1:200 (under 10x lens).



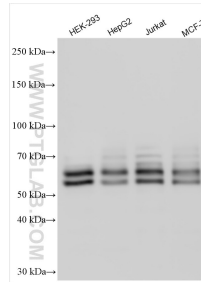
Various lysates were subjected to SDS PAGE followed by western blot with 10503-2-AP (KEAP1 antibody) at dilution of 1:10000 incubated at room temperature for 1.5 hours.



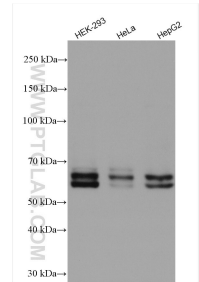
WB result of KEAP1 antibody (10503-2-AP; 1:3000; incubated at room temperature for 1.5 hours) with sh-Control and sh-KEAP1 transfected HEK-293 cells.



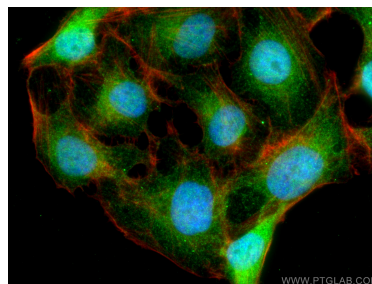
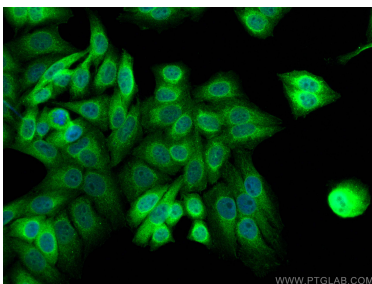
Various lysates were subjected to SDS PAGE followed by western blot with 10503-2-AP (KEAP1 antibody) at dilution of 1:10000 incubated at room temperature for 1.5 hours.



Various lysates were subjected to SDS PAGE followed by western blot with 10503-2-AP (KEAP1 antibody) at dilution of 1:8000 incubated at room temperature for 1.5 hours.



Various lysates were subjected to SDS PAGE followed by western blot with 10503-2-AP (KEAP1 antibody) at dilution of 1:6000 incubated at room temperature for 1.5 hours.



Immunofluorescent analysis of (4% PFA) fixed HepG2 cells using KEAP1 antibody (10503-2-AP) at dilution of 1:200 and CoraLite®488-Conjugated AffiniPure Goat Anti-Rabbit IgG(H+L).

Immunofluorescent analysis of (4% PFA) fixed U2OS cells using KEAP1 antibody (10503-2-AP) at dilution of 1:200 and CoraLite®488-Conjugated AffiniPure Goat Anti-Rabbit IgG(H+L), CL594-Phalloidin (red).