

À des fins de recherche uniquement

# Anticorps Polyclonal de lapin anti-RhoGDI



Numéro de catalogue: 10509-1-Ig

Phare

10 Publications

## Informations de base

Numéro de catalogue: 10509-1-Ig	Numéro d'acquisition GenBank: BC005851	Méthode de purification: Purification par protéine A
Taille: 150ul, Concentration: 2000 µg/ml by Nanodrop and 707 µg/ml by Bradford method using BSA as the standard;	Identification du gène (NCBI): 396	Dilutions recommandées: WB 1:500-1:2000 IHC 1:20-1:200
Hôte: Lapin	Nom complet: Rho GDP dissociation inhibitor (GDI)	
Isotype: IgG	alpha	
Immunogen Catalog Number: AG0791	MW calculé 28 kDa	
	MW observés: 28 kDa	

## Applications

### Applications testées:

IHC, WB, ELISA

### Demandes citées:

IHC, WB

### Spécificité de l'espèce:

Humain, souris

### Espèces citées:

Humain, rat, souris

**Remarque-IHC: il est suggéré de démasquer l'antigène avec un tampon de TE buffer pH 9,0; (\*) A défaut, 'le démasquage de l'antigène peut être effectué avec un tampon citrate pH 6,0.**

### Contrôles positifs:

WB: cellules Jurkat, cellules A431, cellules HEK-293, cellules HeLa, cellules HL-60, tissu pancréatique de souris

IHC: tissu de cancer du sein humain, tissu de cancer du côlon humain

## Informations générales

Rho GDP-dissociation inhibitor (RhoGDI), also called ARHGDI, is one member of ARHGDI, which is ubiquitously expressed and interacts with several Rho GTPases, mainly including RhoA, Rac1, and Cdc42. RhoGDI can inhibit nucleotide exchange and membrane association to downregulate the activities of Rho family GTPase. It is overexpressed in various human cancers. Activity of this protein is important in a variety of cellular processes, and it is overexpressed in various human cancers. Mutations in RhoGDI have been found in individuals with nephrotic syndrome, type 8.

## Publications notables

Autrice	Pubmed ID	Journal	Application
Wang Jing J	23028951	PLoS One	WB, IHC
Yu Lian	30326930	J Exp Clin Cancer Res	WB
Cheng Liu	25397718	J Agric Food Chem	WB

## Stockage

### Stockage:

Stocker à -20°C. Stable pendant un an après l'expédition.

### Tampon de stockage:

PBS avec azoture de sodium à 0,02 % et glycérol à 50 % pH 7,3

L'aliquotage n'est pas nécessaire pour le stockage à -20C

\*\*\* Les 20ul contiennent 0,1% de BSA.

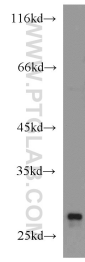
For technical support and original validation data for this product please contact:

T: 1 (888) 4PTGLAB (1-888-478-4522) (toll free in USA), or 1(312) 455-8498 (outside USA)

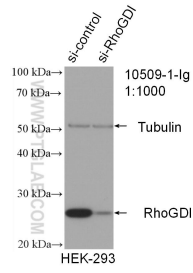
E: proteintech@ptglab.com  
W: ptglab.com

This product is exclusively available under Proteintech Group brand and is not available to purchase from any other manufacturer.

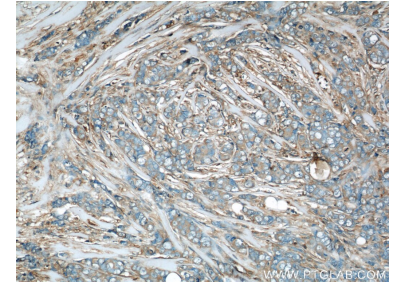
## Données de validation sélectionnées



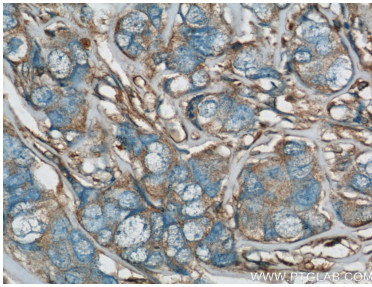
Jurkat cells were subjected to SDS PAGE followed by western blot with 10509-1-Ig (RhoGDI antibody) at dilution of 1:1000 incubated at room temperature for 1.5 hours.



WB result of RhoGDI antibody (10509-1-Ig; 1:1000; incubated at room temperature for 1.5 hours) with sh-Control and sh-RhoGDI transfected HEK-293 cells.



Immunohistochemical analysis of paraffin-embedded human breast cancer using 10509-1-Ig(RhoGDI antibody) at dilution of 1:50 (under 10x lens).



Immunohistochemical analysis of paraffin-embedded human breast cancer using 10509-1-Ig(RhoGDI antibody) at dilution of 1:50 (under 40x lens).