

À des fins de recherche uniquement

Anticorps Polyclonal de lapin anti-PACSIN2



Numéro de catalogue: 10518-2-AP

Phare

7 Publications

Informations de base

Numéro de catalogue:
10518-2-AP

Taille:
150ul, Concentration: 400 µg/ml by Nanodrop and 200 µg/ml by Bradford method using BSA as the standard;

Hôte:
Lapin

Isotype:
IgG

Immunogen Catalog Number:
AG0809

Numéro d'acquisition GenBank:
BC008037

Identification du gène (NCBI):
11252

Nom complet:
protein kinase C and casein kinase substrate in neurons 2

MW calculé:
56 kDa

MW observés:
60-65 kDa

Méthode de purification:
Purification par affinité contre l'antigène

Dilutions recommandées:
WB 1:500-1:1000
IP 0.5-4.0 ug par IP and 1:500-1:1000 for WB
IHC 1:20-1:200
IF 1:50-1:500

Applications

Applications testées:
IF, IHC, IP, WB, ELISA

Demandes citées:
IF, WB

Spécificité de l'espèce:
Humain, souris

Espèces citées:
Humain, poisson-zèbre, souris

Remarque-IHC: il est suggéré de démasquer l'antigène avec un tampon de TE buffer pH 9,0; (*) À défaut, 'le démasquage de l'antigène peut être effectué avec un tampon citrate pH 6,0.

Contrôles positifs:

WB : cellules NIH/3T3, tissu cardiaque de souris, tissu pulmonaire de souris

IP : cellules NIH/3T3,

IHC : tissu de cancer du sein humain, tissu cutané humain

IF : cellules NIH/3T3,

Informations générales

Peripheral membrane proteins of the Bin/amphiphysin/Rvs (BAR) and Fer-CIP4 homology-BAR (F-BAR) family participate in cellular membrane trafficking (PMID: 19549836). PACSIN2 (also known as syndapin-2) is a member of the protein kinase C and casein kinase substrate in neurons (PACSIN) family, which are membrane-binding proteins characterized by an amino-terminal F-BAR domain. PACSIN2 plays a role in intracellular vesicle-mediated transport. It is involved in the endocytosis of cell-surface receptors like the EGF receptor, contributing to its internalization (PMID: 23129763). PACSIN2 also has a role in caveolae membrane sculpting (PMID: 21610094).

Publications notables

Autrice	Pubmed ID	Journal	Application
Simone Laura C LC	24040268	PLoS One	WB
X Liu	36267015	J Dent Res	WB
Claudia Mattheaus	36433988	Nat Commun	WB,IF

Stockage

Stockage:

Stocker à -20°C. Stable pendant un an après l'expédition.

Tampon de stockage:

PBS avec azoture de sodium à 0,02 % et glycérol à 50 % pH 7,3

L'aliquotage n'est pas nécessaire pour le stockage à -20C

*** Les 20ul contiennent 0,1% de BSA.

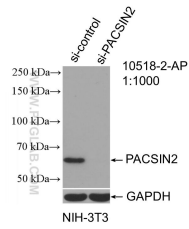
For technical support and original validation data for this product please contact:

T: 1 (888) 4PTGLAB (1-888-478-4522) (toll free in USA), or 1(312) 455-8498 (outside USA)

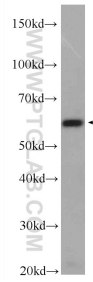
E: proteintech@ptglab.com
W: ptglab.com

This product is exclusively available under Proteintech Group brand and is not available to purchase from any other manufacturer.

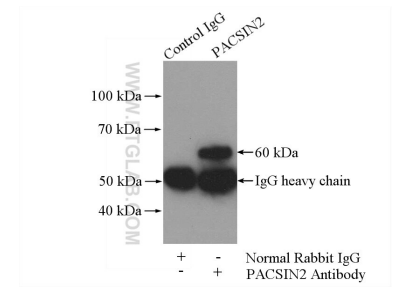
Données de validation sélectionnées



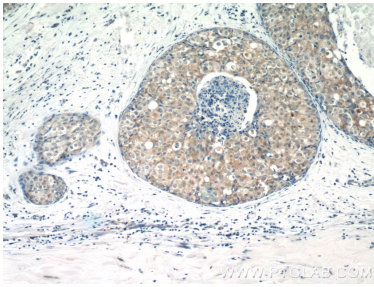
WB result of PACSIN2 antibody (10518-2-AP; 1:1000; incubated at room temperature for 1.5 hours) with sh-Control and sh-PACSIN2 transfected NIH/3T3 cells.



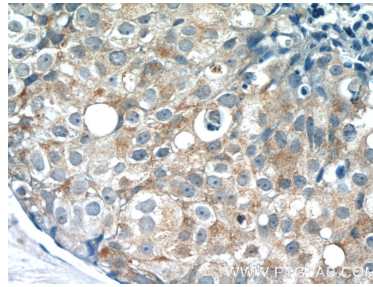
NIH/3T3 cells were subjected to SDS PAGE followed by western blot with 10518-2-AP (PACSIN2 Antibody) at dilution of 1:600 incubated at room temperature for 1.5 hours.



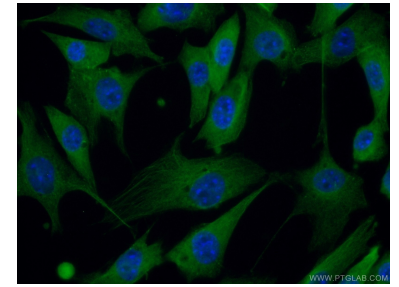
IP Result of anti-PACSIN2 (IP:10518-2-AP, 4ug; Detection:10518-2-AP 1:500) with NIH/3T3 cells lysate 1200ug.



Immunohistochemical analysis of paraffin-embedded human breast cancer tissue slide using 10518-2-AP (PACSIN2 Antibody) at dilution of 1:400 (under 10x lens).



Immunohistochemical analysis of paraffin-embedded human breast cancer tissue slide using 10518-2-AP (PACSIN2 Antibody) at dilution of 1:400 (under 40x lens).



Immunofluorescent analysis of (10% Formaldehyde) fixed NIH/3T3 cells using 10518-2-AP (PACSIN2 antibody) at dilution of 1:50 and Alexa Fluor 488-conjugated AffiniPure Goat Anti-Rabbit IgG(H+L).