

À des fins de recherche uniquement

# Anticorps Polyclonal de lapin anti-DDX21



Numéro de catalogue: 10528-1-AP

Phare

22 Publications

## Informations de base

Numéro de catalogue:

10528-1-AP

Taille:

150ul, Concentration: 900 µg/ml by Nanodrop;

Hôte:

Lapin

Isotype:

IgG

Immunogen Catalog Number:

AG0804

Numéro d'acquisition GenBank:

BC008071

Identification du gène (NCBI):

9188

Nom complet:

DEAD (Asp-Glu-Ala-Asp) box polypeptide 21

MW calculé

87 kDa

MW observés:

87 kDa

Méthode de purification:

Purification par affinité contre l'antigène

Dilutions recommandées:

WB 1:5000-1:50000

IP 0.5-4.0 µg for IP and 1:500-1:2000 for WB

IHC 1:50-1:500

IF 1:50-1:500

## Applications

Applications testées:

FC, IF, IHC, IP, WB, ELISA

Demandes citées:

ChIP, CoIP, IF, IHC, IP, WB

Spécificité de l'espèce:

Humain, rat, souris

Espèces citées:

Humain, souris

Contrôles positifs:

WB : cellules COLO 320, cellules HeLa, cellules HepG2, cellules Jurkat, cellules PC-3

IP : cellules COLO 320,

IHC : tissu de cancer du côlon humain, tissu de cancer du sein humain

IF : cellules HeLa,

**Remarque-IHC: il est suggéré de démasquer l'antigène avec un tampon de TE buffer pH 9,0; (\*) À défaut, le démasquage de l'antigène peut être effectué avec un tampon citrate pH 6,0.**

## Informations générales

DDX21 protein belongs to DEAD box protein family which is characterized by the conserved motif Asp-Glu-Ala-Asp (DEAD). As a putative RNA helicase, DDX21 unwinds double-stranded RNA, folds single-stranded RNA and is involved in process including ribosomal RNA biogenesis, RNA editing and general transcription. Interaction of DDX21 and c-Jun was reported in ribosomal RNA processing. DDX21 exists as two isoforms, molecular weight of modified isoform one is about 87-100 kDa, and the post-modified isoform is about 75-85 kDa. Catalog# 10528-1-AP is a rabbit polyclonal antibody raised against N-terminal of human DDX21.

## Publications notables

Autrice	Pubmed ID	Journal	Application
Hongyun Hao	31554690	J Virol	
Chandreyee Datta	36306353	Sci Adv	WB
Ankang Hu	36505822	Front Oncol	IHC, WB, IF

## Stockage

Stockage:

Stocker à -20°C. Stable pendant un an après l'expédition.

Tampon de stockage:

PBS avec azoture de sodium à 0,02 % et glycérol à 50 % pH 7,3

L'aliquotage n'est pas nécessaire pour le stockage à -20C

\*\*\* Les 20ul contiennent 0,1% de BSA.

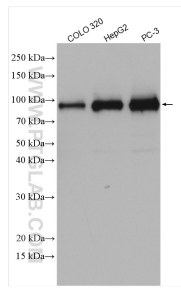
For technical support and original validation data for this product please contact:

T: 1 (888) 4PTGLAB (1-888-478-4522) (toll free in USA), or 1(312) 455-8498 (outside USA)

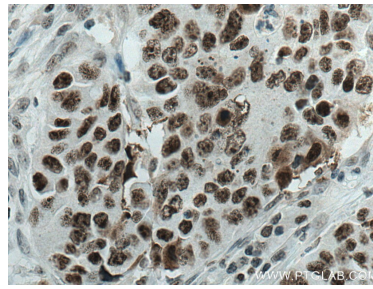
E: proteintech@ptglab.com  
W: ptglab.com

This product is exclusively available under Proteintech Group brand and is not available to purchase from any other manufacturer.

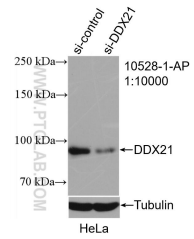
## Données de validation sélectionnées



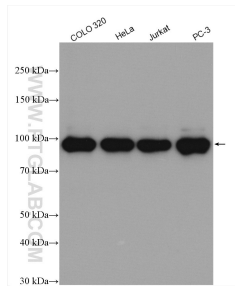
Various lysates were subjected to SDS PAGE followed by western blot with 10528-1-AP (DDX21 antibody) at dilution of 1:10000 incubated at room temperature for 1.5 hours.



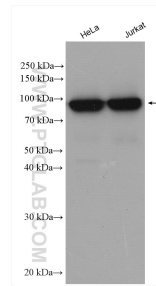
Immunohistochemical analysis of paraffin-embedded human colon cancer tissue slide using 10528-1-AP (DDX21 antibody) at dilution of 1:200 (under 40x Lens). Heat mediated antigen retrieval with Tris-EDTA buffer (pH 9.0).



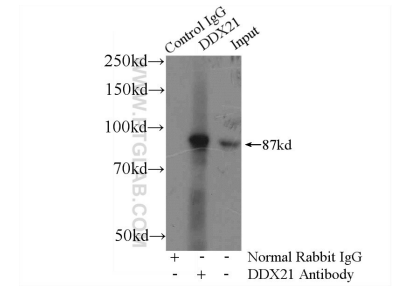
WB result of DDX21 antibody (10528-1-AP; 1:10000; incubated at room temperature for 1.5 hours) with sh-Control and sh-DDX21 transfected HeLa cells.



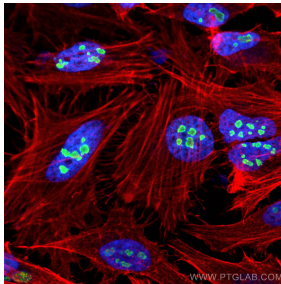
Various lysates were subjected to SDS PAGE followed by western blot with 10528-1-AP (DDX21 antibody) at dilution of 1:10000 incubated at room temperature for 1.5 hours.



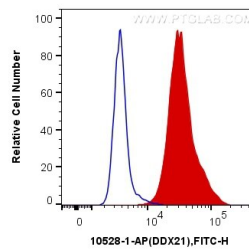
Various lysates were subjected to SDS PAGE followed by western blot with 10528-1-AP (DDX21 antibody) at dilution of 1:8000 incubated at room temperature for 1.5 hours.



IP Result of anti-DDX21 (IP:10528-1-AP, 4ug; Detection:10528-1-AP 1:1000) with COLO 320 cells lysate 2800ug.



Immunofluorescent analysis of (4% PFA) fixed HeLa cells using DDX21 antibody (10528-1-AP) at dilution of 1:200 and CoraLite®488-Conjugated AffiniPure Goat Anti-Rabbit IgG(H+L), CL594-Phalloidin (red).



1x10<sup>6</sup> HepG2 cells were intracellularly stained with 0.2 ug Anti-Human DDX21 (10528-1-AP) and CoraLite®488-Conjugated AffiniPure Goat Anti-Rabbit IgG(H+L) at dilution 1:1000 (red), or 0.2 ug Control Antibody. Cells were fixed and permeabilized with Transcription Factor Staining Buffer Kit (PF00011).