

À des fins de recherche uniquement

Anticorps Polyclonal de lapin anti-PDLIM5



Numéro de catalogue: 10530-1-AP

Phare

9 Publications

Informations de base

Numéro de catalogue:

10530-1-AP

Taille:

150ul, Concentration: 350 µg/ml by Nanodrop and 213 µg/ml by Bradford method using BSA as the standard;

Hôte:

Lapin

Isotype:

IgG

Immunogen Catalog Number:

AG0808

Numéro d'acquisition GenBank:

BC008741

Identification du gène (NCBI):

10611

Nom complet:

PDZ and LIM domain 5

MW calculé

64 kDa

MW observés:

63-68 kDa

Méthode de purification:

Purification par affinité contre l'antigène

Dilutions recommandées:

WB 1:500-1:2000

IP 0.5-4.0 ug for IP and 1:200-1:1000 for WB

IHC 1:20-1:200

Applications

Applications testées:

IHC, IP, WB, ELISA

Demandes citées:

IF, IHC, IP, WB

Spécificité de l'espèce:

Humain, rat, souris

Espèces citées:

Humain, rat, souris

Remarque-IHC: il est suggéré de démasquer l'antigène avec un tampon de TE buffer pH 9,0; (*) A défaut, le démasquage de l'antigène peut être effectué avec un tampon citrate pH 6,0.

Contrôles positifs:

WB : cellules HeLa, cellules A549, cellules HUVEC, cellules NIH/3T3

IP : cellules A549,

IHC : tissu de cancer de la prostate humain,

Informations générales

PDLIM5 (PDZ and LIM domain 5), formerly known as enigma homolog (ENH), is a cytoplasmic protein containing PDZ domain and LIM domain at N terminus and C terminus, respectively. PDLIM5 gene generates several splicing variants, EZH1 to EZH4. The long isoform, ENH1, is widely expressed in various tissues including heart, brain, spleen, liver and kidney. In comparison, shorter isoforms that lack the LIM motifs are expressed in cardiac (ENH3) and skeletal muscle (ENH2, ENH3, and ENH4). ENH1 is essential for differentiation of striated muscles through interaction with other proteins. In addition, PDLIM5 is also involved in mood disorders, such as schizophrenia, bipolar disorder, and major depression. This antibody is specific to PDLIM5, and its specificity has been confirmed by siRNA test.

Publications notables

Autrice	Pubmed ID	Journal	Application
Kento Takaya	36151111	Sci Rep	IHC
Xi Liu	29228678	Oncotarget	WB, IHC
Yanliang Li	25215606	Chem Biol Drug Des	WB

Stockage

Stockage:

Stocker à -20°C. Stable pendant un an après l'expédition.

Tampon de stockage:

PBS avec azoture de sodium à 0,02 % et glycérol à 50 % pH 7,3

L'aliquotage n'est pas nécessaire pour le stockage à -20C

*** Les 20ul contiennent 0,1% de BSA.

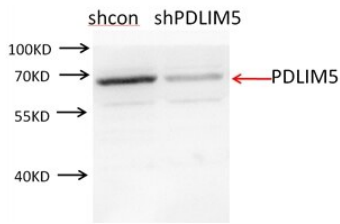
For technical support and original validation data for this product please contact:

T: 1 (888) 4PTGLAB (1-888-478-4522) (toll free in USA), or 1(312) 455-8498 (outside USA)

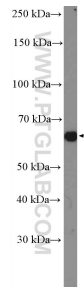
E: proteintech@ptglab.com
W: ptglab.com

This product is exclusively available under Proteintech Group brand and is not available to purchase from any other manufacturer.

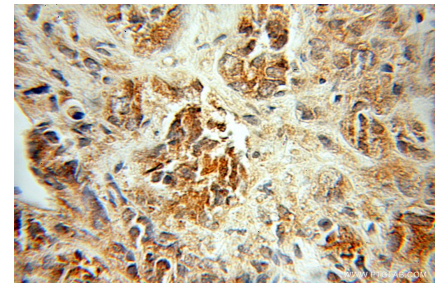
Données de validation sélectionnées



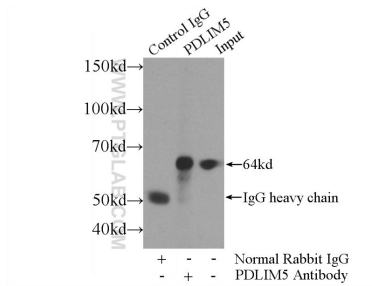
NIH3T3 cells were subjected to SDS PAGE followed by western blot with 10530-1-AP (PDLIM5 antibody) at dilution of 1:250.



HeLa cells were subjected to SDS PAGE followed by western blot with 10530-1-AP (PDLIM5 Antibody) at dilution of 1:1000 incubated at room temperature for 1.5 hours.



Immunohistochemical analysis of paraffin-embedded human prostate cancer using 10530-1-AP (PDLIM5 antibody) at dilution of 1:50 (under 10x lens).



IP Result of anti-PDLIM5 (IP:10530-1-AP, 4ug; Detection:10530-1-AP 1:300) with A549 cells lysate 2400ug.