

À des fins de recherche uniquement

Anticorps Polyclonal de lapin anti-IL-21R



Numéro de catalogue: 10533-1-AP

2 Publications

Informations de base

Numéro de catalogue:
10533-1-AP

Taille:
150ul, Concentration: 550 µg/ml by Nanodrop and 367 µg/ml by Bradford method using BSA as the standard;

Hôte:
Lapin

Isotype:
IgG

Immunogen Catalog Number:
AG0762

Numéro d'acquisition GenBank:
BC004348

Identification du gène (NCBI):
50615

Nom complet:
interleukin 21 receptor

MW calculé
59 kDa

MW observés:
68-70 kDa

Méthode de purification:
Purification par affinité contre l'antigène

Dilutions recommandées:
WB 1:1000-1:5000
IHC 1:50-1:500
IF 1:10-1:100

Applications

Applications testées:
FC, IF, IHC, WB, ELISA

Demandes citées:
IF, IHC, WB

Spécificité de l'espèce:
Humain, rat, souris

Espèces citées:
Humain

Remarque-IHC: il est suggéré de démasquer l'antigène avec un tampon de TE buffer pH 9,0; (*) A défaut, le démasquage de l'antigène peut être effectué avec un tampon citrate pH 6,0.

Contrôles positifs:

WB : cellules COLO 320, cellules K-562, cellules Raji, tissu de thymus de rat, tissu de thymus de souris

IHC : tissu de lymphome humain,

IF : cellules COLO 320,

Informations générales

IL21R, a receptor for interleukin-21, belongs to the type I cytokine receptor family. IL21R has been shown to form a heterodimeric receptor complex with the common gamma-chain, a receptor subunit also shared by the receptors for interleukin 2, 4, 7, 9, and 15. This receptor transduces the growth promoting signal of IL21, and is important for the proliferation and differentiation of T cells, B cells, and natural killer (NK) cells. The ligand binding of this receptor leads to the activation of multiple downstream signaling molecules, including JAK1, JAK3, STAT1, and STAT3.

Publications notables

| Autrice | Pubmed ID | Journal | Application |
|--------------------------|-----------|---------------------|-------------|
| Bruna Cristina Falavinha | 35047041 | Stem Cells Int | WB, IF |
| Yao Yao | 32719094 | J Immunother Cancer | IHC |

Stockage

Stockage:

Stocker à -20°C. Stable pendant un an après l'expédition.

Tampon de stockage:

PBS avec azoture de sodium à 0,02 % et glycérol à 50 % pH 7,3

L'aliquotage n'est pas nécessaire pour le stockage à -20C

*** Les 20ul contiennent 0,1% de BSA.

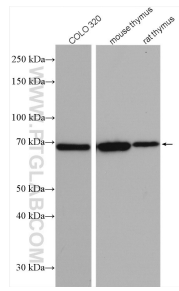
For technical support and original validation data for this product please contact:

T: 1 (888) 4PTGLAB (1-888-478-4522) (toll free in USA), or 1(312) 455-8498 (outside USA)

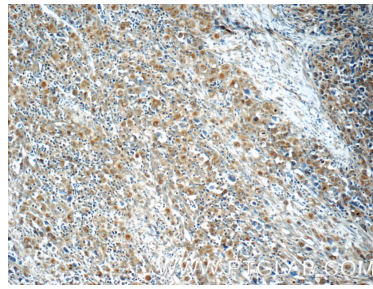
E: proteintech@ptglab.com
W: ptglab.com

This product is exclusively available under Proteintech Group brand and is not available to purchase from any other manufacturer.

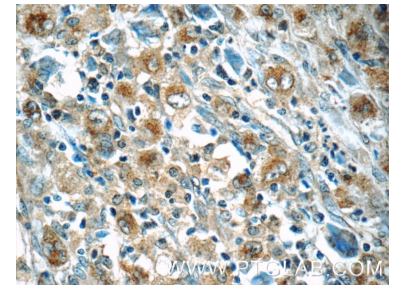
Données de validation sélectionnées



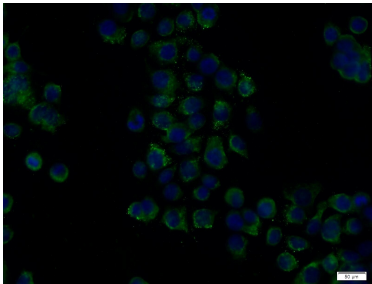
Various lysates were subjected to SDS PAGE followed by western blot with 10533-1-AP (IL21R antibody) at dilution of 1:2500 incubated at room temperature for 1.5 hours.



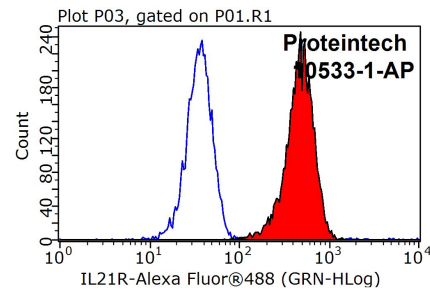
Immunohistochemical analysis of paraffin-embedded human lymphoma tissue slide using 10533-1-AP (IL21R Antibody) at dilution of 1:50 (under 10x lens).



Immunohistochemical analysis of paraffin-embedded human lymphoma tissue slide using 10533-1-AP (IL21R Antibody) at dilution of 1:50 (under 40x lens).



Immunofluorescent analysis of COLO 320 cells using 10533-1-AP (IL21R antibody) at dilution of 1:25 and Alexa Fluor 488-conjugated AffiniPure Goat Anti-Rabbit IgG(H+L).



1x10⁶ K-562 cells were stained with 0.2ug IL21R antibody (10533-1-AP, red) and control antibody (blue). Fixed with 90% MeOH blocked with 3% BSA (30 min). Alexa Fluor 488-conjugated AffiniPure Goat Anti-Rabbit IgG(H+L) with dilution 1:1000.