

À des fins de recherche uniquement

# Anticorps Polyclonal de lapin anti-Calpain 1



Numéro de catalogue: 10538-1-AP

Phare

27 Publications

## Informations de base

Numéro de catalogue:

10538-1-AP

Taille:

150ul, Concentration: 450 µg/ml by Nanodrop and 347 µg/ml by Bradford method using BSA as the standard;

Hôte:

Lapin

Isotype:

IgG

Immunogen Catalog Number:

AG0810

Numéro d'acquisition GenBank:

BC008751

Identification du gène (NCBI):

823

Nom complet:

calpain 1, (mu/l) large subunit

MW calculé

704 aa, 82 kDa

MW observés:

75 kDa

Méthode de purification:

Purification par affinité contre l'antigène

Dilutions recommandées:

WB 1:5000-1:50000

IP 0.5-4.0 ug for IP and 1:500-1:2000 for WB

IHC 1:100-1:400

IF 1:10-1:100

## Applications

Applications testées:

FC, IF, IHC, IP, WB, ELISA

Demandes citées:

CoIP, IF, IHC, WB

Spécificité de l'espèce:

Humain, rat, souris

Espèces citées:

Humain, rat, souris

**Remarque-IHC: il est suggéré de démasquer l'antigène avec un tampon de TE buffer pH 9,0; (\*) A défaut, 'le démasquage de l'antigène peut être 'effectué avec un tampon citrate pH 6,0.**

Contrôles positifs:

WB : cellules HeLa, cellules A2780, cellules A431, cellules HepG2, cellules Jurkat, cellules K-562, cellules PC-3, tissu testiculaire de souris

IP : cellules HeLa,

IHC : tissu de carcinome urothélial humain, tissu cardiaque humain, tissu testiculaire humain

IF : cellules HeLa,

## Informations générales

### Publications notables

Autrice	Pubmed ID	Journal	Application
Shuchao Wang	30240910	Ann Anat	WB,IF
Folnetti A Alvarez	36114323	Breast Cancer Res Treat	WB
Feng Gao	36341808	Neuropharmacology	WB

## Stockage

Stockage:

Stocker à -20°C. Stable pendant un an après l'expédition.

Tampon de stockage:

PBS avec azoture de sodium à 0,02 % et glycérol à 50 % pH 7,3

L'aliquotage n'est pas nécessaire pour le stockage à -20C

\*\*\* Les 20ul contiennent 0,1% de BSA.

For technical support and original validation data for this product please contact:

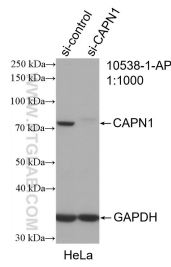
T: 1 (888) 4PTGLAB (1-888-478-4522) (toll free in USA), or 1(312) 455-8498 (outside USA)

E: proteintech@ptglab.com

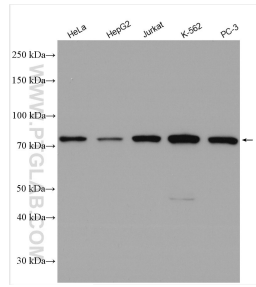
W: ptglab.com

This product is exclusively available under Proteintech Group brand and is not available to purchase from any other manufacturer.

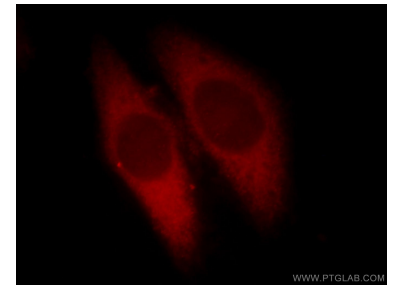
## Données de validation sélectionnées



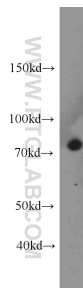
WB result of Calpain 1 antibody (10538-1-AP; 1:1000; incubated at room temperature for 1.5 hours) with sh-Control and sh-Calpain 1 transfected HeLa cells.



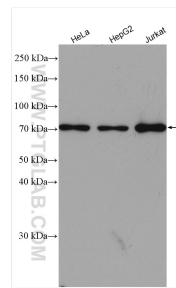
Various lysates were subjected to SDS PAGE followed by western blot with 10538-1-AP (Calpain 1 antibody) at dilution of 1:15000 incubated at room temperature for 1.5 hours.



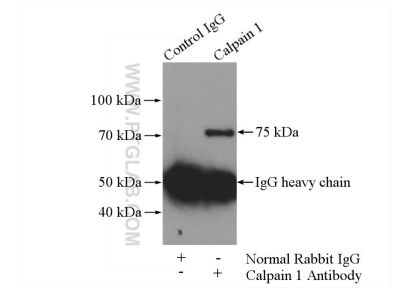
Immunofluorescent analysis of HeLa cells, using CAPN1 antibody 10538-1-AP at 1:25 dilution and Rhodamine-labeled goat anti-rabbit IgG (red).



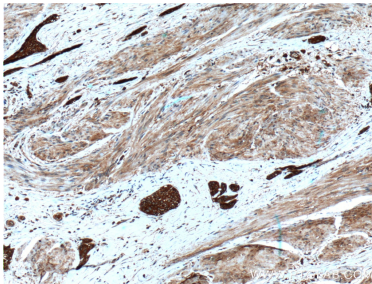
A431 cells were subjected to SDS PAGE followed by western blot with 10538-1-AP (Calpain 1 antibody) at dilution of 1:1000 incubated at room temperature for 1.5 hours.



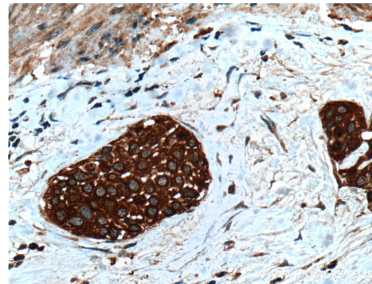
HeLa cells were subjected to SDS PAGE followed by western blot with 10538-1-AP (Calpain 1 antibody) at dilution of 1:15000 incubated at room temperature for 1.5 hours.



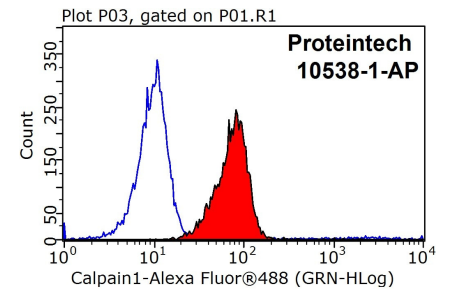
IP Result of anti-Calpain 1 (IP:10538-1-AP, 4ug; Detection:10538-1-AP 1:1000) with HeLa cells lysate 1200ug.



Immunohistochemical analysis of paraffin-embedded human urothelial carcinoma tissue slide using 10538-1-AP (Calpain 1 antibody at dilution of 1:200 (under 10x lens). Heat mediated antigen retrieval with Tris-EDTA buffer (pH 9.0).



Immunohistochemical analysis of paraffin-embedded human urothelial carcinoma tissue slide using 10538-1-AP (Calpain 1 antibody at dilution of 1:200 (under 40x lens). Heat mediated antigen retrieval with Tris-EDTA buffer (pH 9.0).



1X10<sup>6</sup> HeLa cells were stained with 0.2ug Calpain 1 antibody (10538-1-AP, red) and control antibody (blue). Fixed with 90% MeOH blocked with 3% BSA (30 min). Alexa Fluor 488-conjugated AffiniPure Goat Anti-Rabbit IgG(H+L) with dilution 1:1000.