

À des fins de recherche uniquement

Anticorps Polyclonal de lapin anti-PSME1



Numéro de catalogue: 10543-1-AP

1 Publications

Informations de base

Numéro de catalogue: 10543-1-AP	Numéro d'acquisition GenBank: BC007503	Méthode de purification: Purification par affinité contre l'antigène
Taille: 150ul , Concentration: 1000 µg/ml by Nanodrop and 467 µg/ml by Bradford method using BSA as the standard;	Identification du gène (NCBI): 5720	Dilutions recommandées: WB 1:500-1:1000 IHC 1:50-1:500
Hôte: Lapin	Nom complet: proteasome (prosome, macropain) activator subunit 1 (PA28 alpha)	
Isotype: IgG	MW calculé: 29 kDa	
Immunogen Catalog Number: AG0831	MW observés: 29-33 kDa	

Applications

Applications testées:

IHC, WB, ELISA

Demandes citées:

WB

Spécificité de l'espèce:

Humain, rat, souris

Espèces citées:

souris

Remarque-IHC: il est suggéré de démasquer l'antigène avec un tampon de TE buffer pH 9,0; (*) A défaut, 'le démasquage de l'antigène peut être effectué avec un tampon citrate pH 6,0.

Contrôles positifs:

WB : tissu splénique de souris, cellules A431, cellules RAW 264.7

IHC : tissu de cancer du poumon humain,

Informations générales

The principal function of the proteasome is targeted degradation of intracellular proteins. Activity of the 20S proteasome is controlled by regulatory complexes that bind to the ends of the cylindrical proteasome. 11S regulator (REG or PA28), is a complex of 28 kDa subunits that is thought to activate proteasomes toward the production of antigenic peptides. Human PSME1 and PSME2 genes encode the two proteasome activators PA28 alpha and beta, respectively, which have been implicated in antigen processing for loading class I MHC molecules. The PA28 activator complex enhances the generation of class I binding peptides by altering the cleavage pattern of the proteasome.

Publications notables

Autrice	Pubmed ID	Journal	Application
Zhao Dongming D	22623221	Proteomics	WB

Stockage

Stockage:

Stocker à -20°C. Stable pendant un an après l'expédition.

Tampon de stockage:

PBS avec azoture de sodium à 0,02 % et glycérol à 50 % pH 7,3

L'aliquotage n'est pas nécessaire pour le stockage à -20C

*** Les 20ul contiennent 0,1% de BSA.

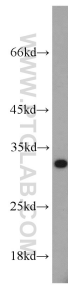
For technical support and original validation data for this product please contact:

T: 1 (888) 4PTGLAB (1-888-478-4522) (toll free in USA), or 1(312) 455-8498 (outside USA)

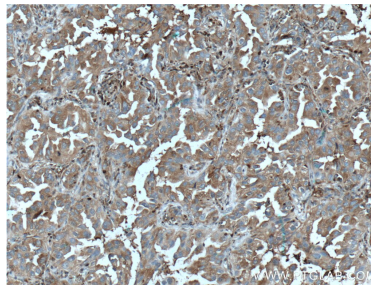
E: proteintech@ptglab.com
W: ptglab.com

This product is exclusively available under Proteintech Group brand and is not available to purchase from any other manufacturer.

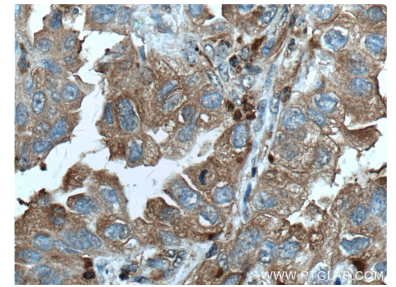
Données de validation sélectionnées



mouse spleen tissue were subjected to SDS PAGE followed by western blot with 10543-1-AP (PSME1 antibody) at dilution of 1:500 incubated at room temperature for 1.5 hours.



Immunohistochemical analysis of paraffin-embedded human lung cancer tissue slide using 10543-1-AP (PSME1 Antibody) at dilution of 1:200 (under 10x lens). Heat mediated antigen retrieval with Tris-EDTA buffer (pH 9.0).



Immunohistochemical analysis of paraffin-embedded human lung cancer tissue slide using 10543-1-AP (PSME1 Antibody) at dilution of 1:200 (under 40x lens). Heat mediated antigen retrieval with Tris-EDTA buffer (pH 9.0).