

À des fins de recherche uniquement

Anticorps Polyclonal de lapin anti-IRF5



Numéro de catalogue: 10547-1-AP

35 Publications

Informations de base

Numéro de catalogue: 10547-1-AP	Numéro d'acquisition GenBank: BC004201	Méthode de purification: Purification par affinité contre l'antigène
Taille: 150ul, Concentration: 400 µg/ml by Nanodrop;	Identification du gène (NCBI): 3663	Dilutions recommandées: WB 1:2000-1:10000 IP 0.5-4.0 ug for IP and 1:200-1:1000 for WB
Hôte: Lapin	Nom complet: interferon regulatory factor 5	IHC 1:50-1:500 IF 1:50-1:500
Isotype: IgG	MW calculé: 56 kDa	
Immunogen Catalog Number: AG0841	MW observés: 56 kDa	

Applications

Applications testées: FC, IF, IHC, IP, WB, ELISA	Contrôles positifs: WB : cellules THP-1, cellules Jurkat, cellules SH-SY5Y IP : cellules HeLa, IHC : tissu de cancer de la prostate humain, tissu de cancer du sein humain IF : cellules HepG2,
Demandes citées: FC, IF, IHC, IP, WB	
Spécificité de l'espèce: Humain, rat, souris	
Espèces citées: Humain, rat, souris	

Remarque-IHC: il est suggéré de démasquer l'antigène avec un tampon de TE buffer pH 9,0; (*) À défaut, le démasquage de l'antigène peut être effectué avec un tampon citrate pH 6,0.

Informations générales

IRF5, also named as SLEB10, contains one IRF tryptophan pentad repeat DNA-binding domain and belongs to the IRF family. It is a transcription factor involved in the induction of interferons IFNA and INFB and inflammatory cytokines upon virus infection. It is activated by TLR7 or TLR8 signaling. Genetic variations in IRF5 are associated with susceptibility to inflammatory bowel disease type 14 (IBD14) and systemic lupus erythematosus type 10 (SLEB10). Alternative splice variant encoding different isoforms exist. Catalog# 10547-1-AP is a rabbit polyclonal antibody raised against the C-terminal of human IRF5.

Publications notables

Autrice	Pubmed ID	Journal	Application
Stephanie Georgina Dakin	29118051	Br J Sports Med	IF
Deborah Cohen	36331667	Neurochem Res	WB
Hong Lu	31177020	Phytomedicine	WB,IF

Stockage

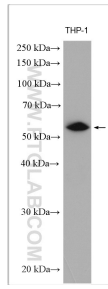
Stockage:
Stocker à -20°C. Stable pendant un an après l'expédition.
Tampon de stockage:
PBS avec azoture de sodium à 0,02 % et glycérol à 50 % pH 7,3
L'aliquotage n'est pas nécessaire pour le stockage à -20C

*** Les 20ul contiennent 0,1% de BSA.

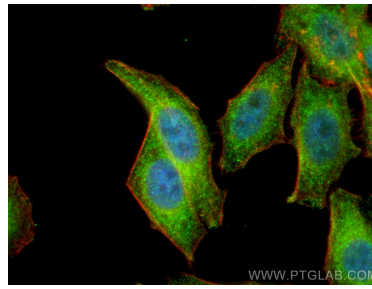
For technical support and original validation data for this product please contact:
T: 1 (888) 4PTGLAB (1-888-478-4522) (toll free in USA), or 1(312) 455-8498 (outside USA)
E: proteintech@ptglab.com
W: ptglab.com

This product is exclusively available under Proteintech Group brand and is not available to purchase from any other manufacturer.

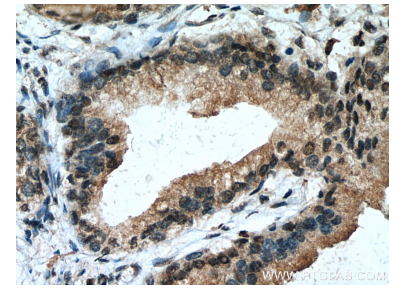
Données de validation sélectionnées



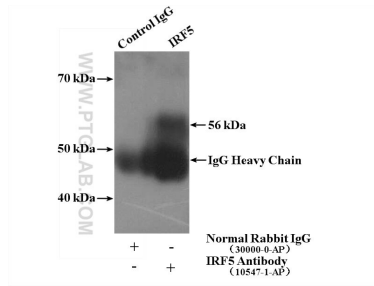
THP-1 cells were subjected to SDS PAGE followed by western blot with 10547-1-AP (IRF5 antibody) at dilution of 1:5000 incubated at room temperature for 1.5 hours.



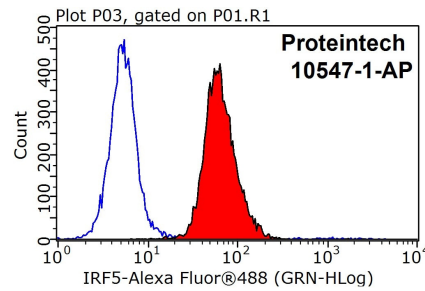
Immunofluorescent analysis of (4% PFA) fixed HepG2 cells using IRF5 antibody (10547-1-AP) at dilution of 1:200 and CoraLite@488-Conjugated AffiniPure Goat Anti-Rabbit IgG(H+L), CL594-Phalloidin (red).



Immunohistochemical analysis of paraffin-embedded human prostate cancer tissue slide using 10547-1-AP (IRF5 antibody) at dilution of 1:200 (under 40x lens). Heat mediated antigen retrieval with Tris-EDTA buffer (pH 9.0).



IP Result of anti-IRF5 (IP:10547-1-AP, 4ug; Detection:10547-1-AP 1:300) with HeLa cells lysate 1600ug.



1x10⁶ HepG2 cells were stained with 0.2ug IRF5 antibody (10547-1-AP, red) and control antibody (blue). Fixed with 90% MeOH blocked with 3% BSA (30 min). Alexa Fluor 488-conjugated AffiniPure Goat Anti-Rabbit IgG(H+L) with dilution 1:1000.