

À des fins de recherche uniquement

Anticorps Polyclonal de lapin anti-NCL



Numéro de catalogue: 10556-1-AP

Phare

32 Publications

Informations de base

Numéro de catalogue:
10556-1-AP

Taille:
150ul, Concentration: 750 µg/ml by
Nanodrop;

Hôte:
Lapin

Isotype:
IgG

Immunogen Catalog Number:
AG0859

Numéro d'acquisition GenBank:
BC006494

Identification du gène (NCBI):
4691

Nom complet:
nucleolin

MW calculé
76 kDa

MW observés:
100-110 kDa

Méthode de purification:
Purification par affinité contre
l'antigène

Dilutions recommandées:
WB 1:5000-1:50000
IP 0.5-4.0 ug for IP and 1:500-1:2000
for WB
IHC 1:50-1:500
IF 1:500-1:2000

Applications

Applications testées:
FC, IF, IHC, IP, WB, ELISA

Demandes citées:
IF, IHC, IP, WB

Spécificité de l'espèce:
Humain, rat, souris

Espèces citées:
Humain, rat, souris

Contrôles positifs:

WB : cellules HEK-293, cellules HeLa, tissu cérébral de rat

IP : cellules HeLa,

IHC : tissu de cancer de la prostate humain, tissu de cancer du col de l'utérus humain

IF : cellules HEK-293,

Remarque-IHC: il est suggéré de démasquer l'antigène avec un tampon de TE buffer pH 9,0; (*) À défaut, le démasquage de l'antigène peut être effectué avec un tampon citrate pH 6,0.

Informations générales

Nucleolin, also known as C23, involved in the control of transcription of ribosomal RNA (rRNA) genes by RNA polymerase I, in nucleocytoplasmic transportation of ribosomal components, and in ribosome maturation and assembly. It associated with intranucleolar chromatin and pre-ribosomal particles, and induced chromatin decondensation by binding to histone H1. Also it has a role in the process of transcriptional elongation. Whilst mammalian nucleolin has a predicted molecular mass of approximately 77 kDa, the apparent molecular mass is between 100 and 110 kDa, and has been attributed to the amino acid composition of the N-terminal domain, which is highly phosphorylated. (PMID: 15925566)

Publications notables

Autrice	Pubmed ID	Journal	Application
Didi-Andreas Song	36180036	Mol Cell Proteomics	IF
Chunming Gu	36109490	Oncogenesis	WB,IHC,IF,IP
Ella Doron-Mandel	34515347	EMBO J	IF

Stockage

Stockage:
Stocker à -20°C. Stable pendant un an après l'expédition.

Tampon de stockage:
PBS avec azoture de sodium à 0,02 % et glycérol à 50 % pH 7,3
L'aliquotage n'est pas nécessaire pour le stockage à -20C

*** Les 20ul contiennent 0,1% de BSA.

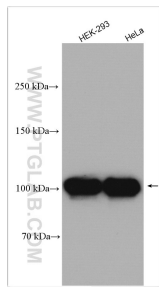
For technical support and original validation data for this product please contact:

T: 1 (888) 4PTGLAB (1-888-478-4522) (toll free in USA), or 1(312) 455-8498 (outside USA)

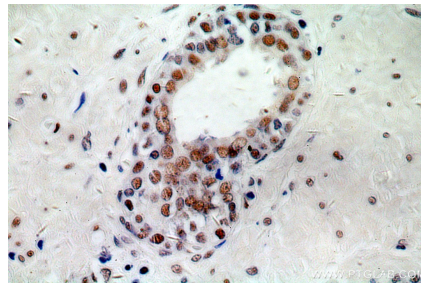
E: proteintech@ptglab.com
W: ptglab.com

This product is exclusively available under Proteintech Group brand and is not available to purchase from any other manufacturer.

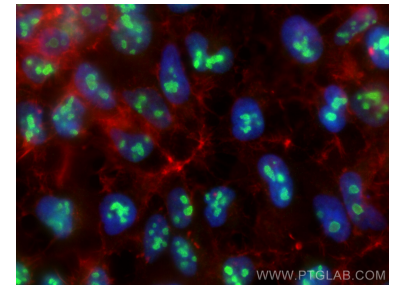
Données de validation sélectionnées



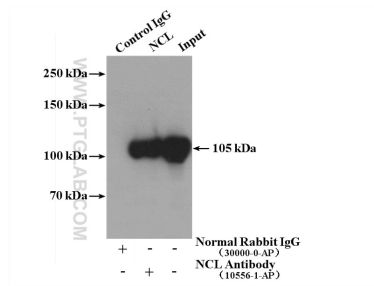
Various lysates were subjected to SDS PAGE followed by western blot with 10556-1-AP (NCL antibody) at dilution of 1:10000 incubated at room temperature for 1.5 hours.



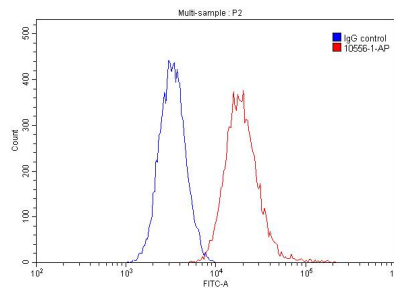
Immunohistochemical analysis of paraffin-embedded human prostate cancer using 10556-1-AP (NCL antibody) at dilution of 1:100 (under 40x lens).



Immunofluorescent analysis of (4% PFA) fixed HEK-293 cells using NCL antibody (10556-1-AP) at dilution of 1:1000 and CoraLite® 488-Conjugated AffiniPure Goat Anti-Rabbit IgG(H+L), CL594-Phalloidin (red).



IP Result of anti-NCL (IP:10556-1-AP, 4ug; Detection:10556-1-AP 1:1000) with HeLa cells lysate 3200ug.



1×10^6 HeLa cells were stained with 0.20ug NCL antibody (10556-1-AP, red) and control antibody (blue). Fixed with 90% MeOH.