

À des fins de recherche uniquement

Anticorps Polyclonal de lapin anti-CCT3



Numéro de catalogue: 10571-1-AP

Phare

11 Publications

Informations de base

Numéro de catalogue:

10571-1-AP

Taille:

150ul, Concentration: 700 µg/ml by Nanodrop and 333 µg/ml by Bradford method using BSA as the standard;

Hôte:

Lapin

Isotype:

IgG

Immunogen Catalog Number:

AG0843

Numéro d'acquisition GenBank:

BC006501

Identification du gène (NCBI):

7203

Nom complet:

chaperonin containing TCP1, subunit 3 (gamma)

MW calculé

60 kDa

MW observés:

60 kDa

Méthode de purification:

Purification par affinité contre l'antigène

Dilutions recommandées:

WB 1:500-1:1000

IP 0.5-4.0 ug for IP and 1:500-1:2000 for WB

IHC 1:50-1:500

IF 1:50-1:500

Applications

Applications testées:

FC, IF, IHC, IP, WB, ELISA

Demandes citées:

IF, WB

Spécificité de l'espèce:

Humain, rat, souris

Espèces citées:

Humain, souris

Remarque-IHC: il est suggéré de démasquer l'antigène avec un tampon de TE buffer pH 9.0; (*) A défaut, 'le démasquage de l'antigène peut être 'effectué avec un tampon citrate pH 6,0.

Contrôles positifs:

WB : cellules HEK-293, cellules HeLa, cellules Jurkat, cellules U2OS, tissu cérébral de rat, tissu cérébral de souris, tissu rénal de rat, tissu rénal de souris

IP : tissu cérébral de souris,

IHC : tissu de cancer du foie humain,

IF : cellules HepG2,

Informations générales

Publications notables

Autrice	Pubmed ID	Journal	Application
Erik McShane	27720452	Cell	WB
Yu Yanyan Y	21468425	Mol Biosyst	WB
Hongyang Shi	35182550	Toxicol Appl Pharmacol	WB

Stockage

Stockage:

Stocker à -20°C. Stable pendant un an après l'expédition.

Tampon de stockage:

PBS avec azoture de sodium à 0,02 % et glycérol à 50 % pH 7,3

L'aliquotage n'est pas nécessaire pour le stockage à -20C

*** Les 20ul contiennent 0,1% de BSA.

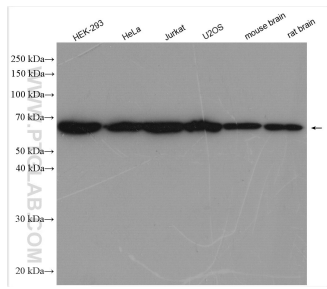
For technical support and original validation data for this product please contact:

T: 1 (888) 4PTGLAB (1-888-478-4522) (toll free in USA), or 1(312) 455-8498 (outside USA)

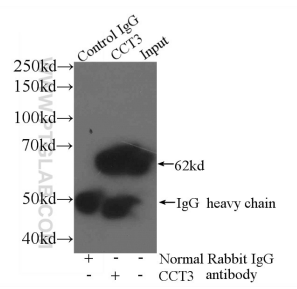
E: proteintech@ptglab.com
W: ptglab.com

This product is exclusively available under Proteintech Group brand and is not available to purchase from any other manufacturer.

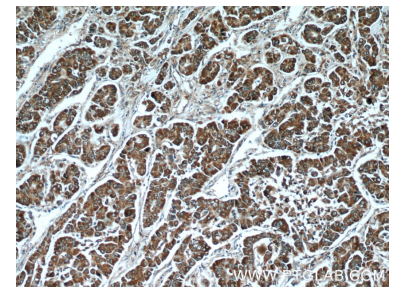
Données de validation sélectionnées



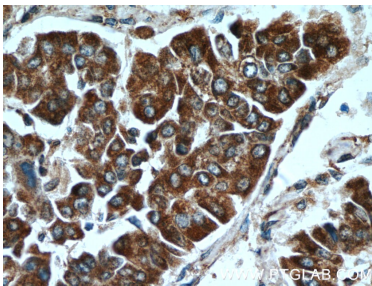
Various lysates were subjected to SDS PAGE followed by western blot with 10571-1-AP (CCT3 antibody) at dilution of 1:800 incubated at room temperature for 1.5 hours.



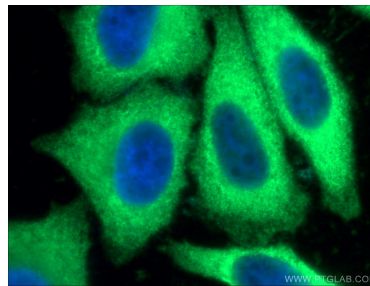
IP Result of anti-CCT3 (IP:10571-1-AP, 3ug; Detection:10571-1-AP 1:1000) with mouse brain tissue lysate 3600ug.



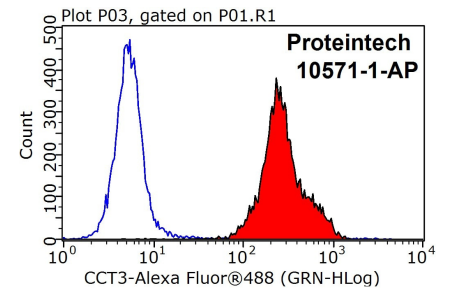
Immunohistochemical analysis of paraffin-embedded human liver cancer tissue slide using 10571-1-AP (CCT3 Antibody) at dilution of 1:50 (under 10x lens).



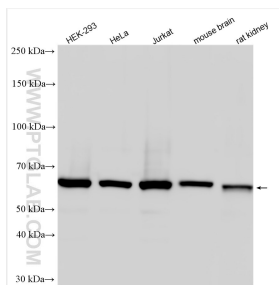
Immunohistochemical analysis of paraffin-embedded human liver cancer tissue slide using 10571-1-AP (CCT3 Antibody) at dilution of 1:50 (under 40x lens).



Immunofluorescent analysis of (-20°C Ethanol) fixed HepG2 cells using 10571-1-AP (CCT3 antibody) at dilution of 1:50 and Alexa Fluor 488-conjugated AffiniPure Goat Anti-Rabbit IgG(H+L).



1X10⁶ HepG2 cells were stained with 0.2ug CCT3 antibody (10571-1-AP, red) and control antibody (blue). Fixed with 90% MeOH blocked with 3% BSA (30 min). Alexa Fluor 488-conjugated AffiniPure Goat Anti-Rabbit IgG(H+L) with dilution 1:1000.



Various lysates were subjected to SDS PAGE followed by western blot with 10571-1-AP (CCT3 antibody) at dilution of 1:12000 incubated at room temperature for 1.5 hours.