

À des fins de recherche uniquement

Anticorps Polyclonal de lapin anti-PELO



Numéro de catalogue: 10582-1-AP

Phare

6 Publications

Informations de base

Numéro de catalogue:
10582-1-AP

Taille:
150ul, Concentration: 450 µg/ml by Nanodrop and 300 µg/ml by Bradford method using BSA as the standard;

Hôte:
Lapin

Isotype:
IgG

Immunogen Catalog Number:
AG0873

Numéro d'acquisition GenBank:
BC005889

Identification du gène (NCBI):
53918

Nom complet:
pelota homolog (Drosophila)

MW calculé
43 kDa

MW observés:
43-45 kDa

Méthode de purification:
Purification par affinité contre l'antigène

Dilutions recommandées:
WB 1:1000-1:6000
IP 0.5-4.0 ug for IP and 1:500-1:1000 for WB
IHC 1:50-1:500
IF 1:20-1:200

Applications

Applications testées:
IF, IHC, IP, WB, ELISA

Demandes citées:
WB

Spécificité de l'espèce:
Humain, rat, souris

Espèces citées:
Humain, souris

Remarque-IHC: il est suggéré de démasquer l'antigène avec un tampon de TE buffer pH 9,0; (*) A défaut, 'le démasquage de l'antigène peut être 'effectué avec un tampon citrate pH 6,0.

Contrôles positifs:

WB : cellules HEK-293, cellules HeLa, cellules SKOV-3, tissu testiculaire de souris

IP : cellules HEK-293,

IHC : tissu hépatique humain,

IF : cellules U2OS,

Informations générales

The Pelo gene was originally identified in a mutagenesis screen for spermatogenesis-specific genes of *Drosophila melanogaster*. The PELO is required for the meiotic division during the G2/M transition, and functions in recognizing stalled ribosomes and triggering endonucleolytic cleavage of the mRNA, a mechanism to release non-functional ribosomes and degrade damaged mRNAs [PMID:12556505]. It may participate in the machinery of protein synthesis or in the regulation of mRNA translation [PMID:9584085].

Publications notables

Autrice	Pubmed ID	Journal	Application
Shuai Hou	31216022	Nucleic Acids Res	WB
I-Hui Wu	34107246	Cell Rep	
Mark Stoneley	35180429	Mol Cell	WB

Stockage

Stockage:

Stocker à -20°C. Stable pendant un an après l'expédition.

Tampon de stockage:

PBS avec azoture de sodium à 0,02 % et glycérol à 50 % pH 7,3

L'aliquotage n'est pas nécessaire pour le stockage à -20C

*** Les 20ul contiennent 0,1% de BSA.

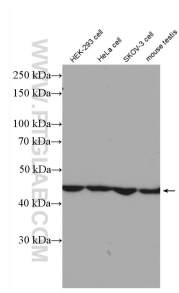
For technical support and original validation data for this product please contact:

T: 1 (888) 4PTGLAB (1-888-478-4522) (toll free in USA), or 1(312) 455-8498 (outside USA)

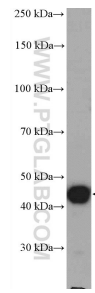
E: proteintech@ptglab.com
W: ptglab.com

This product is exclusively available under Proteintech Group brand and is not available to purchase from any other manufacturer.

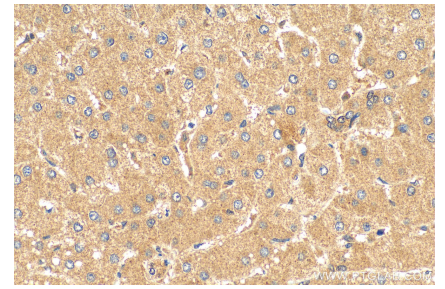
Données de validation sélectionnées



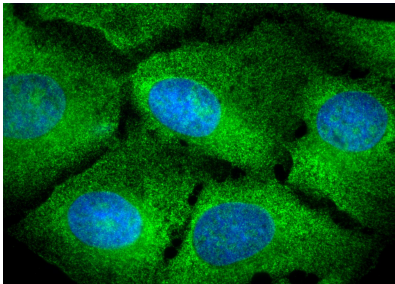
Various cells were subjected to SDS PAGE followed by western blot with 10582-1-AP (PELO antibody) at dilution of 1:3000 incubated at room temperature for 1.5 hours.



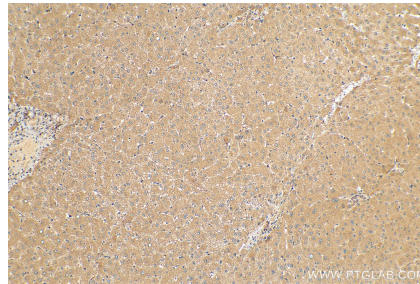
mouse testis tissue were subjected to SDS PAGE followed by western blot with 10582-1-AP (PELO antibody) at dilution of 1:3000 incubated at room temperature for 1.5 hours.



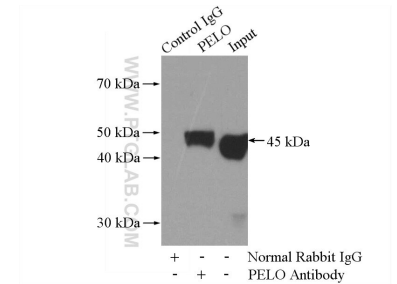
Immunohistochemical analysis of paraffin-embedded human liver tissue slide using 10582-1-AP (PELO antibody) at dilution of 1:200 (under 40x lens). Heat mediated antigen retrieval with Tris-EDTA buffer (pH 9.0).



IF result of 10582-1-AP (PELO antibody) in U2OS cell by Dr. Nancy Kedersha. (cytoplasm and nucleus; Green).



Immunohistochemical analysis of paraffin-embedded human liver tissue slide using 10582-1-AP (PELO antibody) at dilution of 1:200 (under 10x lens). Heat mediated antigen retrieval with Tris-EDTA buffer (pH 9.0).



IP Result of anti-PELO (IP:10582-1-AP, 4 μ g; Detection:10582-1-AP 1:500) with HEK-293 cells lysate 1200 μ g.