

À des fins de recherche uniquement

# Anticorps Polyclonal de lapin anti- INVS



Numéro de catalogue: 10585-1-AP

Phare

9 Publications

## Informations de base

Numéro de catalogue:  
10585-1-AP

Taille:  
150ul , Concentration: 267 µg/ml by  
Bradford method using BSA as the  
standard;

Hôte:  
Lapin

Isotype:  
IgG

Immunogen Catalog Number:  
AG0934

Numéro d'acquisition GenBank:  
BC006370

Identification du gène (NCBI):  
27130

Nom complet:  
inversin

MW calculé  
118 kDa, 100 kDa

MW observés:  
100-110 kDa

Méthode de purification:  
Purification par affinité contre  
l'antigène

Dilutions recommandées:  
WB 1:200-1:1000  
IHC 1:20-1:200  
IF 1:10-1:100

## Applications

Applications testées:  
IF, IHC, WB, ELISA

Demandes citées:  
FC, IF, IHC, WB

Spécificité de l'espèce:  
Humain, rat, souris

Espèces citées:  
Humain, rat, souris

**Remarque-IHC: il est suggéré de démasquer  
l'antigène avec un tampon de TE buffer pH  
9,0; (\*) A défaut, 'le démasquage de  
l'antigène peut être 'effectué avec un  
tampon citrate pH 6,0.**

Contrôles positifs:

WB : cellules MCF-7, cellules HepG2, cellules Jurkat,  
cellules K-562, cellules L02, cellules Raji, cellules SH-  
SY5Y, tissu de muscle squelettique de souris

IHC : tissu de cancer du sein humain, tissu de cirrhose  
hépatique humain

IF : cellules HeLa, cellules hTERT-RPE1

## Informations générales

INVS, short for inversin, plays a role in primary cilia function and involvement in the cell cycle. It is required for normal renal development and establishment of left-right axis. INVS may involve in Wnt signaling pathways by acting as a molecular switch between different them. Inhibits the canonical Wnt pathway by targeting cytoplasmic disheveled (DVL1) for degradation by the ubiquitin-proteasome. This suggests that it is required in renal development to oppose the repression of terminal differentiation of tubular epithelial cells by Wnt signaling. This antibody is a rabbit polyclonal antibody raised against part of N-terminus of human INVS. The calculated molecular weight of INVS is 80 kDa, but the modified INVS protein is about 100-110 kDa.

## Publications notables

Autrice	Pubmed ID	Journal	Application
Machteld M Oud	24677454	Am J Med Genet A	IF
Linxi Li	30808893	Cell Death Dis	WB
Ankan Gupta	35143420	JCI Insight	FC

## Stockage

Stockage:

Stocker à -20°C. Stable pendant un an après l'expédition.

Tampon de stockage:

PBS avec azoture de sodium à 0,02 % et glycérol à 50 % pH 7,3

L'aliquotage n'est pas nécessaire pour le stockage à -20C

\*\*\* Les 20ul contiennent 0,1% de BSA.

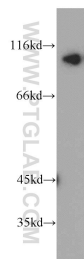
For technical support and original validation data for this product please contact:

T: 1 (888) 4PTGLAB (1-888-478-4522) (toll free  
in USA), or 1(312) 455-8498 (outside USA)

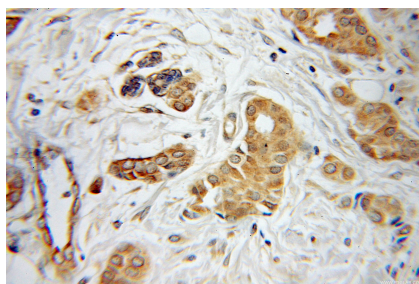
E: proteintech@ptglab.com  
W: ptglab.com

This product is exclusively available under Proteintech  
Group brand and is not available to purchase from any  
other manufacturer.

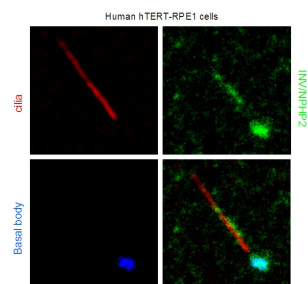
## Données de validation sélectionnées



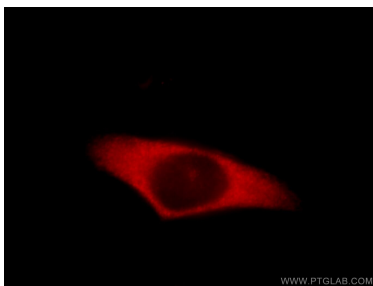
MCF7 cells were subjected to SDS PAGE followed by western blot with 10585-1-AP (INVS antibody) at dilution of 1:100 incubated at room temperature for 1.5 hours.



Immunohistochemical analysis of paraffin-embedded human breast cancer using 10585-1-AP (INVS antibody) at dilution of 1:100 (under 25x lens).



IF result from Dr. Corbit, Kevin. anti-INVS (also named as NPHP2; 10585-1-AP) marks the 'inversin compartment' and basal bodies of Human hTERT-RPE1 cells.



Immunofluorescent analysis of HeLa cells, using INVS antibody 10585-1-AP at 1:25 dilution and Rhodamine-labeled goat anti-rabbit IgG (red).