

À des fins de recherche uniquement

# Anticorps Polyclonal de lapin anti-RBM15



Numéro de catalogue: 10587-1-AP

Phare

32 Publications

## Informations de base

Numéro de catalogue: 10587-1-AP	Numéro d'acquisition GenBank: BC006397	Méthode de purification: Purification par affinité contre l'antigène
Taille: 150ul, Concentration: 1000 µg/ml by Nanodrop;	Identification du gène (NCBI): 64783	Dilutions recommandées: WB 1:2000-1:16000 IP 0.5-4.0 ug for IP and 1:500-1:1000 for WB
Hôte: Lapin	Nom complet: RNA binding motif protein 15	IHC 1:50-1:500 IF 1:1000-1:4000
Isotype: IgG	MW calculé: 105 kDa	
Immunogen Catalog Number: AG0938	MW observés: 100-107 kDa	

## Applications

### Applications testées:

IF, IHC, IP, WB, ELISA

### Demandes citées:

CoIP, IF, IHC, IP, RIP, WB

### Spécificité de l'espèce:

Humain, rat, souris

### Espèces citées:

Humain, rat, souris

### Contrôles positifs:

WB : cellules SW480, cellules HEK293, cellules HEK-293

IP : cellules HEK-293,

IHC : tissu de cancer du sein humain,

IF : cellules A431,

**Remarque-IHC: il est suggéré de démasquer l'antigène avec un tampon de TE buffer pH 9,0; (\*) À défaut, le démasquage de l'antigène peut être effectué avec un tampon citrate pH 6,0.**

## Informations générales

RNA-binding motif protein 15 (RBM15) belongs to the SPEN protein family, which have repressor function in several signaling pathway, and may bind to RNA through interaction with spliceosome components. It was first described as a 5' translocation partner of the MAL gene in t(1,22)(p13;q13) infant acute megakaryocytic leukemia, and it functions in murine hematopoiesis through modulating Notch-induced transcriptional activation, which play crucial roles in leukemogenesis. Decreasing RBM15 levels with RNA interference could inhibit the growth and proliferation, block the cell cycle, and induce apoptosis in CML cells.

## Publications notables

Autrice	Pubmed ID	Journal	Application
Vladimir Majerciak	25234929	RNA	WB
Zhenwei Li	34825733	J Clin Lab Anal	WB
Fanhua Kong	36434140	Discov Oncol	WB

## Stockage

### Stockage:

Stocker à -20°C. Stable pendant un an après l'expédition.

### Tampon de stockage:

PBS avec azoture de sodium à 0,02 % et glycérol à 50 % pH 7,3

L'aliquotage n'est pas nécessaire pour le stockage à -20C

\*\*\* Les 20ul contiennent 0,1% de BSA.

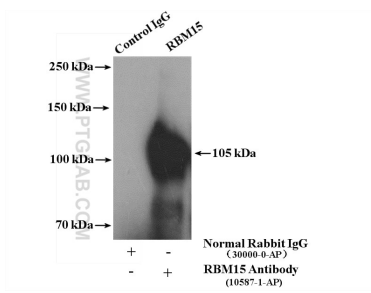
For technical support and original validation data for this product please contact:

T: 1 (888) 4PTGLAB (1-888-478-4522) (toll free in USA), or 1(312) 455-8498 (outside USA)

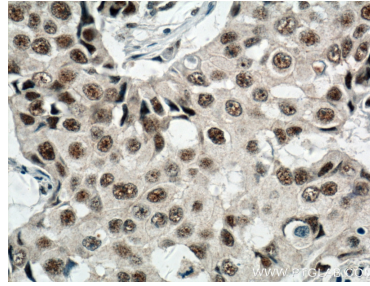
E: proteintech@ptglab.com  
W: ptglab.com

This product is exclusively available under Proteintech Group brand and is not available to purchase from any other manufacturer.

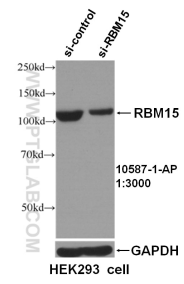
## Données de validation sélectionnées



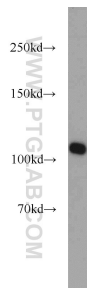
IP result of anti-RBM15 (IP:10587-1-AP, 4ug; Detection:10587-1-AP 1:500) with HEK-293 cells lysate 2600 ug.



Immunohistochemical analysis of paraffin-embedded human breast cancer tissue slide using 10587-1-AP (RBM15 antibody) at dilution of 1:200 (under 40x lens. Heat mediated antigen retrieval with Tris-EDTA buffer (pH 9.0).



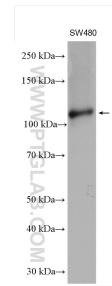
WB result of RBM15 antibody (10587-1-AP, 1:3000) with si-control and si-RBM15 transfected HEK293 cells.



HEK-293 cells were subjected to SDS PAGE followed by western blot with 10587-1-AP (RBM15 antibody) at dilution of 1:1000 incubated at room temperature for 1.5 hours.



SW480 cells were subjected to SDS PAGE followed by western blot with 10587-1-AP (RBM15 antibody) at dilution of 1:8000 incubated at room temperature for 1.5 hours.



SW480 cells were subjected to SDS PAGE followed by western blot with 10587-1-AP (RBM15 antibody) at dilution of 1:8000 incubated at room temperature for 1.5 hours.



Immunofluorescent analysis of (4% PFA) fixed A431 cells using RBM15 antibody (10587-1-AP) at dilution of 1:2000 and CoraLite@488-Conjugated AffiniPure Goat Anti-Rabbit IgG(H+L), CL594-Phalloidin (red).