

À des fins de recherche uniquement

Anticorps Polyclonal de lapin anti-Cytokeratin 6A



Numéro de catalogue: 10590-1-AP

10 Publications

Informations de base

Numéro de catalogue: 10590-1-AP	Numéro d'acquisition GenBank: BC008807	Méthode de purification: Purification par affinité contre l'antigène
Taille: 150ul, Concentration: 1000 µg/ml by Nanodrop and 433 µg/ml by Bradford method using BSA as the standard;	Identification du gène (NCBI): 3853	Dilutions recommandées: WB 1:10000-1:50000 IHC 1:200-1:800 IF 1:50-1:500
Hôte: Lapin	Nom complet: keratin 6A	
Isotype: IgG	MW calculé: 60 kDa	
Immunogen Catalog Number: AG0882	MW observés: 56 kDa	

Applications

Applications testées:
FC, IF, IHC, WB, ELISA

Demandes citées:
IF, IHC, WB

Spécificité de l'espèce:
Humain, rat, souris

Espèces citées:
Humain, rat, souris

Remarque-IHC: il est suggéré de démasquer l'antigène avec un tampon de TE buffer pH 9,0; (*) A défaut, 'le démasquage de l'antigène peut être effectué avec un tampon citrate pH 6,0.

Contrôles positifs:

WB : cellules A431, cellules A375, cellules HeLa, cellules MCF-7, cellules U-251, tissu cutané de rat

IHC : tissu de cancer de l'oesophage humain, tissu cutané humain, tissu de cancer du poumon humain, tissu de cancer du sein humain

IF : cellules A431, cellules HeLa

Informations générales

Keratins are a large family of proteins that form the intermediate filament cytoskeleton of epithelial cells, which are classified into two major sequence types. Type I keratins are a group of acidic intermediate filament proteins, including K9-K23, and the hair keratins Ha1-Ha8. Type II keratins are the basic or neutral counterparts to the acidic type I keratins, including K1-K8, and the hair keratins, Hb1-Hb6. Keratin 6 is a type II keratin. It is used as marker for epidermal hyperproliferation and differentiation. There are three keratin 6 isoforms: keratin 6A, 6B and 6C. They share more than 99% identical DNA sequence.

Publications notables

Autrice	Pubmed ID	Journal	Application
Bing Sun	27684953	PLoS One	WB
Lihua Gao	32168425	J Cell Mol Med	WB, IHC, IF
Jian Xiao	32162441	Clin Respir J	WB

Stockage

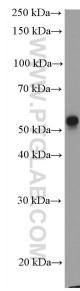
Stockage:
Stocker à -20°C. Stable pendant un an après l'expédition.
Tampon de stockage:
PBS avec azoture de sodium à 0,02 % et glycérol à 50 % pH 7,3
L'aliquotage n'est pas nécessaire pour le stockage à -20C

*** Les 20ul contiennent 0,1% de BSA.

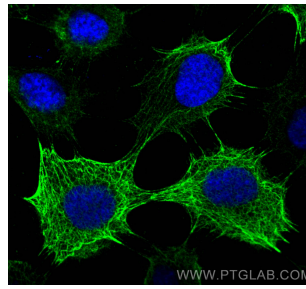
For technical support and original validation data for this product please contact:
T: 1 (888) 4PTGLAB (1-888-478-4522) (toll free in USA), or 1(312) 455-8498 (outside USA)
E: proteintech@ptglab.com
W: ptglab.com

This product is exclusively available under Proteintech Group brand and is not available to purchase from any other manufacturer.

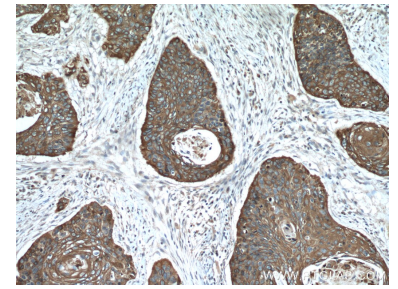
Données de validation sélectionnées



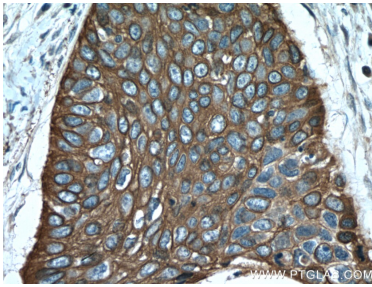
A431 cells were subjected to SDS PAGE followed by western blot with 10590-1-AP (Cytokeratin 6A antibody) at dilution of 1:50000 incubated at room temperature for 1.5 hours.



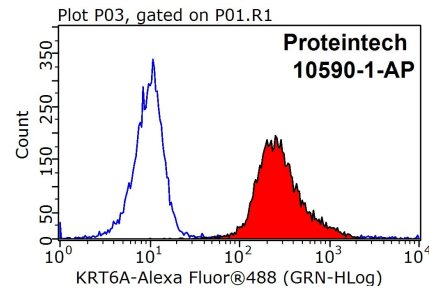
Immunofluorescent analysis of (-20°C Methanol) fixed A431 cells using Cytokeratin 6A antibody (10590-1-AP) at dilution of 1:200 and CoraLite®488-Conjugated AffiniPure Goat Anti-Rabbit IgG(H+L).



Immunohistochemical analysis of paraffin-embedded human oesophagus cancer tissue slide using 10590-1-AP (Cytokeratin 6A antibody) at dilution of 1:400 (under 10x lens. Heat mediated antigen retrieval with Tris-EDTA buffer (pH 9.0).



Immunohistochemical analysis of paraffin-embedded human oesophagus cancer tissue slide using 10590-1-AP (Cytokeratin 6A antibody) at dilution of 1:400 (under 40x lens. Heat mediated antigen retrieval with Tris-EDTA buffer (pH 9.0).



1X10⁶ HeLa cells were stained with 0.2ug Cytokeratin 6A antibody (10590-1-AP, red) and control antibody (blue). Fixed with 90% MeOH blocked with 3% BSA (30 min). Alexa Fluor 488-conjugated AffiniPure Goat Anti-Rabbit IgG(H+L) with dilution 1:1000.