

À des fins de recherche uniquement

# Anticorps Polyclonal de lapin anti-Plexin B2



Numéro de catalogue: 10602-1-AP

Phare

6 Publications

## Informations de base

Numéro de catalogue:  
10602-1-AP

Taille:  
150ul, Concentration: 1000 µg/ml by Nanodrop and 547 µg/ml by Bradford method using BSA as the standard;

Hôte:  
Lapin

Isotype:  
IgG

Immunogen Catalog Number:  
AG0941

Numéro d'acquisition GenBank:  
BC004542

Identification du gène (NCBI):

Nom complet:  
plexin B2

MW calculé  
205 kDa

MW observés:  
80 kDa, 240 kDa

Méthode de purification:  
Purification par affinité contre l'antigène

Dilutions recommandées:  
WB 1:500-1:1000  
IP 0.5-4.0 ug par IP and 1:500-1:2000 for WB  
IHC 1:400-1:1600  
IF 1:10-1:100

## Applications

Applications testées:  
IF, IHC, IP, WB, ELISA

Demandes citées:  
IF, IHC, IP, WB

Spécificité de l'espèce:  
Humain, rat, souris

Espèces citées:  
Humain, souris

**Remarque-IHC: il est suggéré de démasquer l'antigène avec un tampon de TE buffer pH 9,0; (\*) À défaut, 'le démasquage de l'antigène peut être 'effectué avec un tampon citrate pH 6,0.**

Contrôles positifs:

WB : cellules A549, cellules HEK-293, cellules HeLa, cellules HepG2, cellules MCF-7, tissu cérébral humain, tissu hépatique de souris, tissu ovarien de souris

IP : tissu hépatique de souris,

IHC : tissu d'amygdalite humaine, tissu de cancer du foie humain, tissu de cancer du sein humain, tissu de gliome humain

IF : cellules HepG2,

## Informations générales

Semaphorins, originally identified as axon guidance molecules, have also been implicated in angiogenesis, immunoregulation, and cancer (PMID: 16584533). Plexins are main receptors for semaphorins and are thought to control many of the functional effects of semaphorins. PLXNB2 is one of the three plexin-B family members which participate in axon guidance and cell migration in response to semaphorins. It has been reported that plexin B2 precursor is 240 kDa and can be cleaved into alpha subunit (~170-kDa) and beta subunit (80-kDa) (PMID: 12533544). This antibody raised against 1542-1841aa of human plexin B2 can recognize precursor and beta subunit of plexin B2.

## Publications notables

Autrice	Pubmed ID	Journal	Application
Katrin Gerstmann	36399562	Sci Adv	IF
Xiaonan Liu	33758201	Nat Commun	WB
Rongpan Bai	32510170	EMBO J	WB, IF

## Stockage

Stockage:

Stocker à -20°C. Stable pendant un an après l'expédition.

Tampon de stockage:

PBS avec azoture de sodium à 0,02 % et glycérol à 50 % pH 7,3

L'aliquotage n'est pas nécessaire pour le stockage à -20C

\*\*\* Les 20ul contiennent 0,1% de BSA.

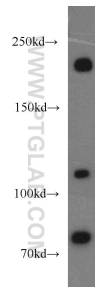
For technical support and original validation data for this product please contact:

T: 1 (888) 4PTGLAB (1-888-478-4522) (toll free in USA), or 1(312) 455-8498 (outside USA)

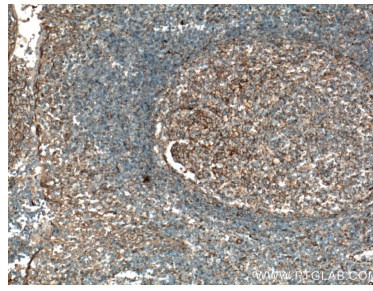
E: proteintech@ptglab.com  
W: ptglab.com

This product is exclusively available under Proteintech Group brand and is not available to purchase from any other manufacturer.

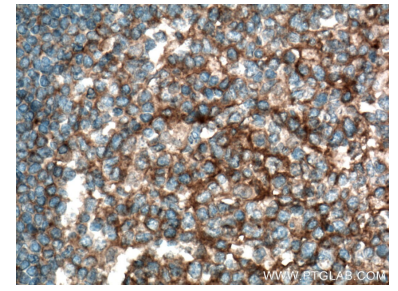
## Données de validation sélectionnées



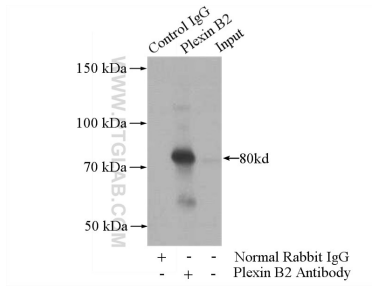
A549 cells were subjected to SDS PAGE followed by western blot with 10602-1-AP (Plexin B2 antibody) at dilution of 1:800 incubated at room temperature for 1.5 hours.



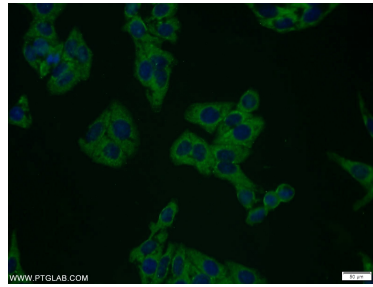
Immunohistochemical analysis of paraffin-embedded human tonsillitis tissue slide using 10602-1-AP (Plexin B2 antibody) at dilution of 1:800 (under 10x lens. Heat mediated antigen retrieval with Tris-EDTA buffer (pH 9.0).



Immunohistochemical analysis of paraffin-embedded human tonsillitis tissue slide using 10602-1-AP (Plexin B2 antibody) at dilution of 1:800 (under 40x lens. Heat mediated antigen retrieval with Tris-EDTA buffer (pH 9.0).



IP Result of anti-Plexin B2 (IP:10602-1-AP, 4ug; Detection:10602-1-AP 1:1000) with mouse liver tissue lysate 4000ug.



Immunofluorescent analysis of HepG2 cells using 10602-1-AP (Plexin B2 antibody) at dilution of 1:25 and Alexa Fluor 488-conjugated AffiniPure Goat Anti-Rabbit IgG(H+L).