

À des fins de recherche uniquement

# Anticorps Polyclonal de lapin anti-APOBEC3G



Numéro de catalogue: 10608-1-AP

3 Publications

## Informations de base

Numéro de catalogue:

10608-1-AP

Taille:

150ul, Concentration: 300 µg/ml by Bradford method using BSA as the standard;

Hôte:

Lapin

Isotype:

IgG

Immunogen Catalog Number:

AG0887

Numéro d'acquisition GenBank:

BC024268

Identification du gène (NCBI):

60489

Nom complet:

apolipoprotein B mRNA editing enzyme, catalytic polypeptide-like 3G

MW calculé

46 kDa

MW observés:

46 kDa

Méthode de purification:

Purification par affinité contre l'antigène

Dilutions recommandées:

WB 1:200-1:1000

IP 0.5-4.0 ug for IP and 1:200-1:1000 for WB

IHC 1:20-1:200

IF 1:20-1:200

## Applications

Applications testées:

IF, IHC, IP, WB, ELISA

Demandes citées:

IHC, WB

Spécificité de l'espèce:

Humain, souris

Espèces citées:

Humain

Contrôles positifs:

WB : tissu de côlon de souris,

IP : cellules COLO 320,

IHC : tissu testiculaire humain, tissu de cancer du côlon humain

IF : cellules MCF-7,

**Remarque-IHC: il est suggéré de démasquer l'antigène avec un tampon de TE buffer pH 9,0; (\*) A défaut, 'le démasquage de l'antigène peut être 'effectué avec un tampon citrate pH 6,0.**

## Informations générales

APOBEC3G (apolipoprotein B mRNA-editing enzyme, catalytic polypeptide-like 3G, also known as CEM15), a member of the APOBEC family of cytidine deaminase-editing enzymes, is a potent DNA mutator that can be packaged into budding retroviruses. HA-tagged APOBEC3G can be expressed in 293T cells, which do not express APOBEC3G endogenously, in addition 22- and 24-kDa proteolytic degradation fragments can be detected by western blot (PMID:14672928). It has 2 isoforms produced by alternative splicing.

## Publications notables

Autrice	Pubmed ID	Journal	Application
Wei Sun	35884600	Cancers (Basel)	WB
Li Jianhua J	23832071	Nat Immunol	WB
Ding Qingqing Q	21985787	J Clin Invest	WB, IHC

## Stockage

Stockage:

Stocker à -20°C. Stable pendant un an après l'expédition.

Tampon de stockage:

PBS avec azoture de sodium à 0,02 % et glycérol à 50 % pH 7,3

L'aliquotage n'est pas nécessaire pour le stockage à -20C

\*\*\* Les 20ul contiennent 0,1% de BSA.

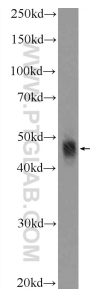
For technical support and original validation data for this product please contact:

T: 1 (888) 4PTGLAB (1-888-478-4522) (toll free in USA), or 1(312) 455-8498 (outside USA)

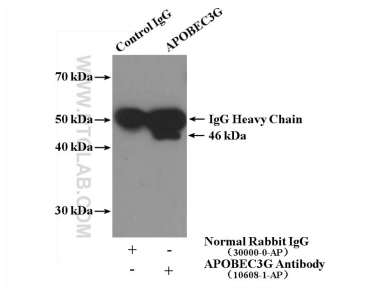
E: proteintech@ptglab.com  
W: ptglab.com

This product is exclusively available under Proteintech Group brand and is not available to purchase from any other manufacturer.

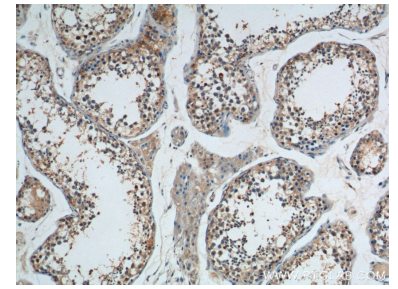
## Données de validation sélectionnées



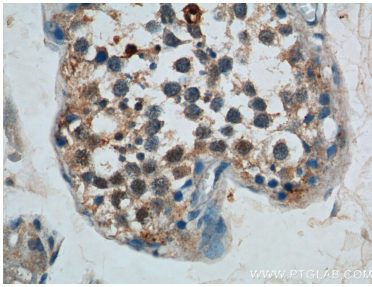
mouse colon tissue were subjected to SDS PAGE followed by western blot with 10608-1-AP (APOBEC3G Antibody) at dilution of 1:100 incubated at room temperature for 1.5 hours.



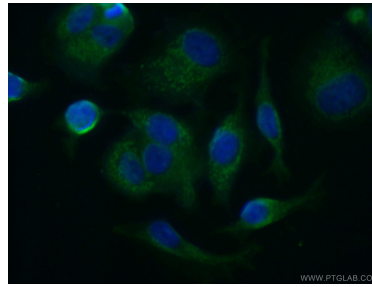
IP Result of anti-APOBEC3G (IP:10608-1-AP, 4ug; Detection:10608-1-AP 1:300) with COLO 320 cells lysate 2240ug.



Immunohistochemical analysis of paraffin-embedded human testis tissue slide using 10608-1-AP (APOBEC3G Antibody) at dilution of 1:200 (under 10x lens).



Immunohistochemical analysis of paraffin-embedded human testis tissue slide using 10608-1-AP (APOBEC3G Antibody) at dilution of 1:200 (under 40x lens).



Immunofluorescent analysis of MCF-7 cells using 10608-1-AP (APOBEC3G antibody) at dilution of 1:50 and Alexa Fluor 488-conjugated AffiniPure Goat Anti-Rabbit IgG(H+L).