

À des fins de recherche uniquement

Anticorps Polyclonal de lapin anti-RORA



Numéro de catalogue: 10616-1-AP

Phare

14 Publications

Informations de base

Numéro de catalogue:
10616-1-AP

Taille:
150ul, Concentration: 600 µg/ml by
Nanodrop;

Hôte:
Lapin

Isotype:
IgG

Immunogen Catalog Number:
AG0944

Numéro d'acquisition GenBank:
BC008831

Identification du gène (NCBI):
6095

Nom complet:
RAR-related orphan receptor A

MW calculé

59 kDa

MW observés:
65-70 kDa

Méthode de purification:
Purification par affinité contre
l'antigène

Dilutions recommandées:
WB 1:500-1:2000

Applications

Applications testées:
WB, ELISA

Demandes citées:
IHC, IP, WB

Spécificité de l'espèce:
Humain

Espèces citées:
Humain, rat, souris

Contrôles positifs:

WB : cellules DU 145, cellules HeLa, cellules Jurkat, cellules K-562, cellules L02, cellules PC-3, cellules SMMC-7721

Informations générales

RORA is a steroid hormone receptor and has been implicated in the pathology of circadian rhythms, bone growth, angiogenesis, development of cones, cellular metabolism and a mediator in the immune and lipid metabolism pathways [PMID:21998696]. It binds DNA as a monomer to hormone response elements (HRE) containing a single core motif half-site preceded by a short A-T-rich sequence, which binds to the consensus sequence 5'-[AT][TA]A[AT][CGT]TAGGTCA-3'. Regulates a number of genes involved in lipid metabolism such as apolipoproteins AI, APOA5, CIII, CYP71 and PPAR gamma, in cerebellum and photoreceptor development including PCP2, OPN1SW, OPN1SM and ARR3, in circadian rhythm with BMAL1, and skeletal muscle development with MYOD1 [PMID:11053433,14570920].

Publications notables

Autrice	Pubmed ID	Journal	Application
Guohua Ji	31585206	Free Radic Biol Med	WB
Qifeng Li	34862127	Int Immunopharmacol	WB
Bin Dai	29213214	Cancer Cell Int	WB

Stockage

Stockage:

Stocker à -20°C. Stable pendant un an après l'expédition.

Tampon de stockage:

PBS avec azoture de sodium à 0,02 % et glycérol à 50 % pH 7,3

L'aliquotage n'est pas nécessaire pour le stockage à -20C

*** Les 20ul contiennent 0,1% de BSA.

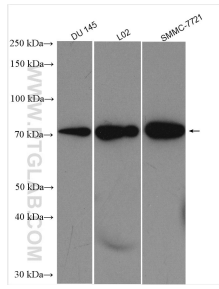
For technical support and original validation data for this product please contact:

T: 1 (888) 4PTGLAB (1-888-478-4522) (toll free in USA), or 1(312) 455-8498 (outside USA)

E: proteintech@ptglab.com
W: ptglab.com

This product is exclusively available under Proteintech Group brand and is not available to purchase from any other manufacturer.

Données de validation sélectionnées



Various lysates were subjected to SDS PAGE followed by western blot with 10616-1-AP (RORA antibody) at dilution of 1:1000 incubated at room temperature for 1.5 hours.