

À des fins de recherche uniquement

Anticorps Polyclonal de lapin anti-AP1M2



Numéro de catalogue: 10618-1-AP **Phare**

Informations de base

Numéro de catalogue: 10618-1-AP	Numéro d'acquisition GenBank: BC005021	Méthode de purification: Purification par affinité contre l'antigène
Taille: 150ul, Concentration: 400 µg/ml by Nanodrop and 213 µg/ml by Bradford method using BSA as the standard;	Identification du gène (NCBI): 10053	Dilutions recommandées: WB 1:500-1:1000 IHC 1:50-1:500
Hôte: Lapin	Nom complet: adaptor-related protein complex 1, mu 2 subunit	
Isotype: IgG	MW calculé: 48 kDa	
Immunogen Catalog Number: AG0961	MW observés: 50-55 kDa	

Applications

Applications testées:

IHC, WB, ELISA

Spécificité de l'espèce:

Humain, rat, souris

Remarque-IHC: il est suggéré de démasquer l'antigène avec un tampon de TE buffer pH 9,0; (*) À défaut, le démasquage de l'antigène peut être effectué avec un tampon citrate pH 6,0.

Contrôles positifs:

WB : tissu de côlon de souris, cellules HaCaT

IHC : tissu de cancer du pancréas humain, tissu rénal humain

Informations générales

AP1M2 is a subunit of the adaptor complex AP-1. It belongs to the adaptor complexes medium subunit family. Adaptor protein (AP) complexes are cytosolic heterotetramers that mediate the sorting of membrane proteins in the secretory and endocytic pathways. AP-1 is found at the cytoplasmic face of coated vesicles located at the Golgi complex, where it mediates both the recruitment of clathrin to the membrane and the recognition of sorting signals within the cytosolic tails of transmembrane receptors.

Stockage

Stockage:

Stocker à -20°C. Stable pendant un an après l'expédition.

Tampon de stockage:

PBS avec azoture de sodium à 0,02 % et glycérol à 50 % pH 7,3

L'aliquotage n'est pas nécessaire pour le stockage à -20C

*** Les 20ul contiennent 0,1% de BSA.

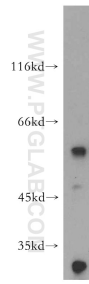
For technical support and original validation data for this product please contact:

T: 1 (888) 4PTGLAB (1-888-478-4522) (toll free in USA), or 1(312) 455-8498 (outside USA)

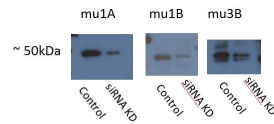
E: proteintech@ptglab.com
W: ptglab.com

This product is exclusively available under Proteintech Group brand and is not available to purchase from any other manufacturer.

Données de validation sélectionnées

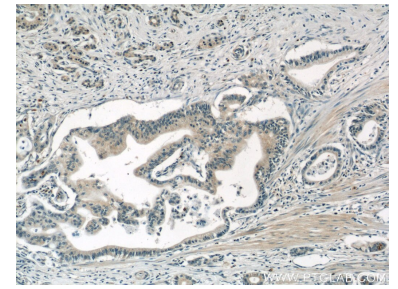


mouse colon tissue were subjected to SDS PAGE followed by western blot with 10618-1-AP (AP1M2 antibody) at dilution of 1:500 incubated at room temperature for 1.5 hours.

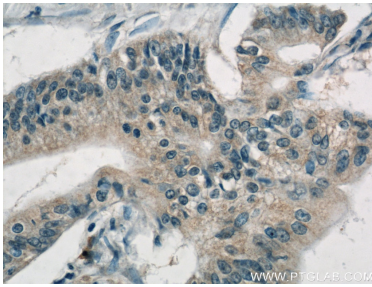


AP1M1 is mu1A: 12112-1-AP,
AP1M2 is mu1B: 10618-1-AP,
Ap3M2 is mu3B: 11925-1-AP,
acceptable bands ~50 kDa showing
some degree of siRNA
knockdown

WB result of AP1M2 antibody (10618-1-AP;1:500) with siRNA cell lysate.



Immunohistochemical analysis of paraffin-embedded human pancreas cancer tissue slide using 10618-1-AP (AP1M2 Antibody) at dilution of 1:50 (under 10x lens).



Immunohistochemical analysis of paraffin-embedded human pancreas cancer tissue slide using 10618-1-AP (AP1M2 Antibody) at dilution of 1:50 (under 40x lens).