

À des fins de recherche uniquement

# Anticorps Polyclonal de lapin anti-SDHB



Numéro de catalogue: 10620-1-AP

Phare

37 Publications

## Informations de base

<b>Numéro de catalogue:</b> 10620-1-AP	<b>Numéro d'acquisition GenBank:</b> BC007840	<b>Méthode de purification:</b> Purification par affinité contre l'antigène
<b>Taille:</b> 150ul , Concentration: 400 µg/ml by Nanodrop and 300 µg/ml by Bradford method using BSA as the standard;	<b>Identification du gène (NCBI):</b> 6390	<b>Dilutions recommandées:</b> WB 1:5000-1:50000 IP 0.5-4.0 ug for IP and 1:2000-1:10000 for WB IHC 1:100-1:400 IF 1:50-1:500
<b>Hôte:</b> Lapin	<b>Nom complet:</b> succinate dehydrogenase complex, subunit B, iron sulfur (Ip)	
<b>Isotype:</b> IgG	<b>MW calculé:</b> 32 kDa	
<b>Immunogen Catalog Number:</b> AG0968	<b>MW observés:</b> 28-32 kDa	

## Applications

### Applications testées:

IF, IHC, IP, WB, ELISA

### Demandes citées:

FC (Intra), IF, IHC, IP, WB

### Spécificité de l'espèce:

Humain, rat, souris

### Espèces citées:

Humain, poisson-zèbre, rat, souris

**Remarque-IHC: il est suggéré de démasquer l'antigène avec un tampon de TE buffer pH 9,0; (\*) A défaut, 'le démasquage de l'antigène peut être 'effectué avec un tampon citrate pH 6,0.**

### Contrôles positifs:

WB : tissu cardiaque de souris, cellules HEK-293, cellules HeLa, cellules HepG2, tissu cardiaque de rat, tissu hépatique de souris

IP : cellules HEK-293,

IHC : tissu cardiaque humain, tissu de carcinome à cellules rénales humain, tissu rénal de souris, tissu rénal humain

IF : cellules HepG2,

## Informations générales

SDHB(Succinate dehydrogenase [ubiquinone] iron-sulfur subunit, mitochondrial) is also named as SDH, SDH1 and belongs to the succinate dehydrogenase/fumarate reductase iron-sulfur protein family. The SDHD, SDHB, and SDHC genes encode subunits of mitochondrial complex II (succinate dehydrogenase). Mitochondrial complex II is a heterotetrameric complex involved in the aerobic electron transport chain and catalyses the oxidation of succinate to fumarate (Krebs cycle) with transport of electrons to the ubiquinone pool. SDHA and SDHB are the hydrophilic catalytic part of the complex and are highly conserved(J Med Genet 2004;41:e99). Defects in SDHB are a cause of susceptibility to pheochromocytoma (PCC), paragangliomas type 4 (PGL4), paraganglioma and gastric stromal sarcoma (PGSS) and Cowden-like syndrome (CWDLS).

## Publications notables

Autrice	Pubmed ID	Journal	Application
Wen-Kuan Huang	34638938	Int J Mol Sci	WB
Teresa W-M Fan	36150727	J Immunol	
Beiwu Lan	36116558	Exp Cell Res	WB

## Stockage

### Stockage:

Stocker à -20°C. Stable pendant un an après l'expédition.

### Tampon de stockage:

PBS avec azoture de sodium à 0,02 % et glycérol à 50 % pH 7,3

L'aliquotage n'est pas nécessaire pour le stockage à -20C

\*\*\* Les 20ul contiennent 0,1% de BSA.

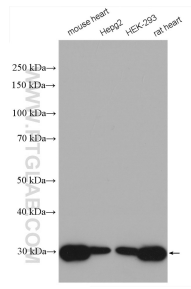
For technical support and original validation data for this product please contact:

T: 1 (888) 4PTGLAB (1-888-478-4522) (toll free in USA), or 1(312) 455-8498 (outside USA)

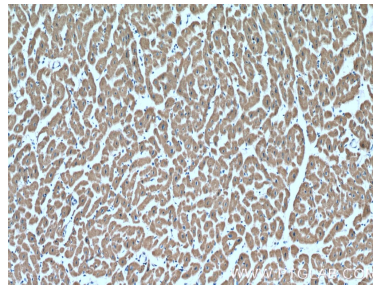
E: proteintech@ptglab.com  
W: ptglab.com

This product is exclusively available under Proteintech Group brand and is not available to purchase from any other manufacturer.

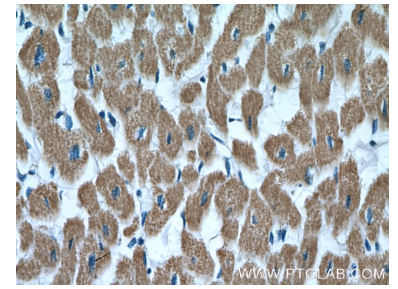
## Données de validation sélectionnées



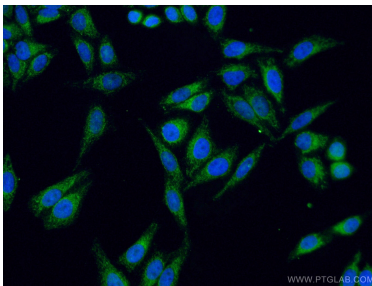
Various lysates were subjected to SDS PAGE followed by western blot with 10620-1-AP (SDHB antibody) at dilution of 1:20000 incubated at room temperature for 1.5 hours.



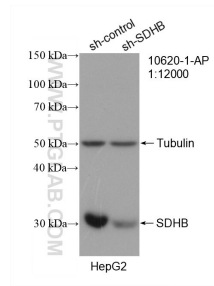
Immunohistochemical analysis of paraffin-embedded human heart tissue slide using 10620-1-AP (SDHB Antibody) at dilution of 1:200 (under 10x lens).



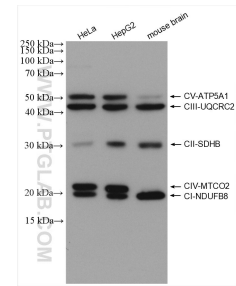
Immunohistochemical analysis of paraffin-embedded human heart tissue slide using 10620-1-AP (SDHB Antibody) at dilution of 1:200 (under 40x lens).



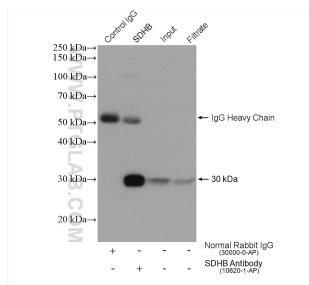
Immunofluorescent analysis of (4% PFA) fixed HepG2 cells using 10620-1-AP (SDHB antibody) at dilution of 1:100 and CoralLite488-Conjugated AffiniPure Goat Anti-Rabbit IgG(H+L).



WB result of SDHB antibody (10620-1-AP; 1:12000; incubated at room temperature for 1.5 hours) with sh-Control and sh-SDHB transfected HepG2 cells.



These five antibodies, ATP5A1 (14676-1-AP, 1:8000), UQCRC2 (14742-1-AP, 1:4000), SDHB (10620-1-AP, 1:8000), MTCO2 (55070-1-AP, 1:1000), NDUF8B (14794-1-AP, 1:5000), can be assembled OXPHOS kit to detect the relative levels of the 5 OXPHOS complexes in mitochondrial preparations.



IP result of anti-SDHB(IP:10620-1-AP, 4ug; Detection:10620-1-AP 1:5000) with HEK-293 cells lysate 1360 ug.