

À des fins de recherche uniquement

Anticorps Polyclonal de lapin anti-14-3-3 Sigma



Numéro de catalogue: 10622-1-AP

1 Publications

Informations de base

Numéro de catalogue:

10622-1-AP

Taille:

150ul , Concentration: 650 µg/ml by Nanodrop and 367 µg/ml by Bradford method using BSA as the standard;

Hôte:

Lapin

Isotype:

IgG

Immunogen Catalog Number:

AG0973

Numéro d'acquisition GenBank:

BC002995

Identification du gène (NCBI):

2810

Nom complet:

stratifin

MW calculé

28 kDa

MW observés:

28-30 kDa

Méthode de purification:

Purification par affinité contre l'antigène

Dilutions recommandées:

WB 1:5000-1:50000

IHC 1:250-1:1000

Applications

Applications testées:

FC, IHC, WB, ELISA

Demandes citées:

WB

Spécificité de l'espèce:

Humain, rat, souris

Espèces citées:

Humain

Remarque-IHC: il est suggéré de démasquer l'antigène avec un tampon de TE buffer pH 9,0; (*) A défaut, 'le démasquage de l'antigène peut être effectué avec un tampon citrate pH 6,0.

Contrôles positifs:

WB : cellules A431, cellules A549, cellules HeLa, cellules U2OS

IHC : tissu cutané de souris, tissu de cancer de l'estomac humain

Informations générales

14-3-3 Sigma is a member 14-3-3 family of highly conserved proteins participating in diverse cellular processes including cell cycle progression. It is exclusively present in various epithelial cells, and alternatively named as human epithelial marker (HEM), or stratifin. Alteration of its expression has been linked to cancer.

Publications notables

Autrice	Pubmed ID	Journal	Application
Thomas J Nelson	37221295	Sci Rep	WB

Stockage

Stockage:

Stocker à -20°C. Stable pendant un an après l'expédition.

Tampon de stockage:

PBS avec azoture de sodium à 0,02 % et glycérol à 50 % pH 7,3

L'aliquotage n'est pas nécessaire pour le stockage à -20C

*** Les 20ul contiennent 0,1% de BSA.

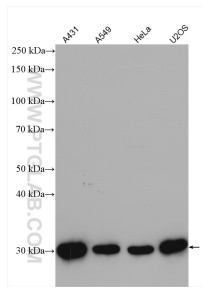
For technical support and original validation data for this product please contact:

T: 1 (888) 4PTGLAB (1-888-478-4522) (toll free in USA), or 1(312) 455-8498 (outside USA)

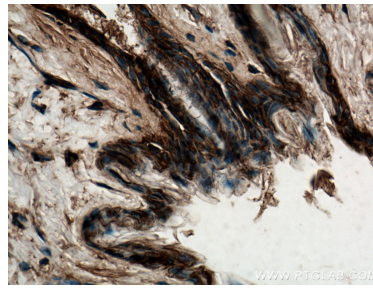
E: proteintech@ptglab.com
W: ptglab.com

This product is exclusively available under Proteintech Group brand and is not available to purchase from any other manufacturer.

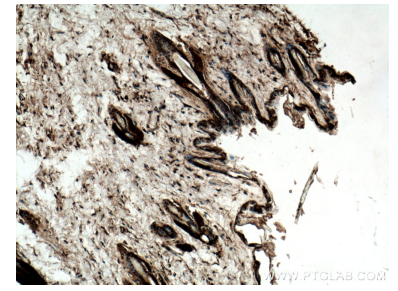
Données de validation sélectionnées



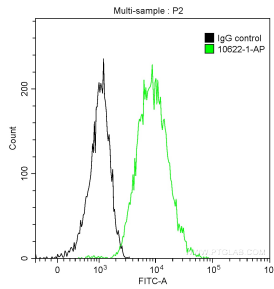
Various lysates were subjected to SDS PAGE followed by western blot with 10622-1-AP (14-3-3 sigma antibody) at dilution of 1:10000 incubated at room temperature for 1.5 hours.



Immunohistochemical analysis of paraffin-embedded mouse skin tissue slide using 10622-1-AP (14-3-3 sigma antibody) at dilution of 1:500 (under 40x lens).



Immunohistochemical analysis of paraffin-embedded mouse skin tissue slide using 10622-1-AP (14-3-3 sigma antibody) at dilution of 1:500 (under 10x lens).



1×10^6 A431 cells were intracellularly stained with 0.2 μ g Anti-Human 14-3-3 Sigma (10622-1-AP) and CoraLite[®]488-Conjugated AffiniPure Goat Anti-Rabbit IgG(H+L) at dilution 1:1000 (green), and 0.2 μ g Control Antibody. Cells were fixed with 90% MeOH.