

À des fins de recherche uniquement

Anticorps Polyclonal de lapin anti-RHOC



Numéro de catalogue: 10632-1-AP

17 Publications

Informations de base

Numéro de catalogue: 10632-1-AP	Numéro d'acquisition GenBank: BC007245	Méthode de purification: Purification par affinité contre l'antigène
Taille: 150ul , Concentration: 300 µg/ml by Nanodrop and 200 µg/ml by Bradford method using BSA as the standard;	Identification du gène (NCBI): 389	Dilutions recommandées: WB 1:2000-1:16000
Hôte: Lapin	Nom complet: ras homolog gene family, member C	
Isotype: IgG	MW calculé: 22 kDa	
Immunogen Catalog Number: AG0988	MW observés: 22 kDa	

Applications

Applications testées: WB, ELISA	Contrôles positifs: WB : cellules A549, cellules C6, cellules HeLa, cellules NIH/3T3
Demandes citées: IHC, WB	
Spécificité de l'espèce: Humain, rat, souris	
Espèces citées: Humain, rat	

Informations générales

Ras homolog family member C (RHOC) encodes a Rho-related GTP-binding protein, which belongs to small GTPase superfamily and also Rho family. RHOC. Regulates a signal transduction pathway linking plasma membrane receptors to the assembly of focal adhesions and actin stress fibers. Expression of RHOC contributes to metastatic phenotype of melanoma cells and is associated with multiple cancers including gastric carcinomas, ovarian carcinomas and breast cancer as well.

Publications notables

Autrice	Pubmed ID	Journal	Application
Yu Lian	30326930	J Exp Clin Cancer Res	WB
Xiu-Bo Sang	27748937	Oncol Rep	
Shuo Chen	28984384	Mol Carcinog	WB, IHC

Stockage

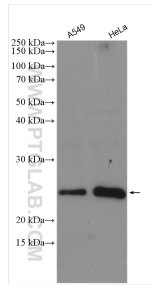
Stockage:
Stocker à -20°C. Stable pendant un an après l'expédition.
Tampon de stockage:
PBS avec azoture de sodium à 0,02 % et glycérol à 50 % pH 7,3
L'aliquotage n'est pas nécessaire pour le stockage à -20C

*** Les 20ul contiennent 0,1% de BSA.

For technical support and original validation data for this product please contact:
T: 1 (888) 4PTGLAB (1-888-478-4522) (toll free in USA), or 1(312) 455-8498 (outside USA)
E: proteintech@ptglab.com
W: ptglab.com

This product is exclusively available under Proteintech Group brand and is not available to purchase from any other manufacturer.

Données de validation sélectionnées



Various lysates were subjected to SDS PAGE followed by western blot with 10632-1-AP (RHOC antibody) at dilution of 1:8000 incubated at room temperature for 1.5 hours.