

À des fins de recherche uniquement

Anticorps Polyclonal de lapin anti-Inhibin Beta A



Numéro de catalogue: 10651-1-AP

Phare

16 Publications

Informations de base

Numéro de catalogue:
10651-1-AP

Taille:
150ul, Concentration: 250 µg/ml by Nanodrop and 133 µg/ml by Bradford method using BSA as the standard;

Hôte:
Lapin

Isotype:
IgG

Immunogen Catalog Number:
AG1001

Numéro d'acquisition GenBank:
BC007858

Identification du gène (NCBI):
3624

Nom complet:
inhibin, beta A

MW calculé
47 kDa

MW observés:
47 kDa

Méthode de purification:
Purification par affinité contre l'antigène

Dilutions recommandées:
WB 1:500-1:1000
IHC 1:20-1:200
IF 1:20-1:200

Applications

Applications testées:
IF, IHC, WB, ELISA

Demandes citées:
IF, IHC, WB

Spécificité de l'espèce:
Humain

Espèces citées:
Humain, souris

Remarque-IHC: il est suggéré de démasquer l'antigène avec un tampon de TE buffer pH 9,0; (*) A défaut, 'le démasquage de l'antigène peut être 'effectué avec un tampon citrate pH 6,0.

Contrôles positifs:

WB : cellules HeLa, cellules A549, cellules BGC-823, cellules HepG2, cellules MCF-7, cellules SGC-7901

IHC : tissu de cancer du poumon humain,

IF : cellules A549,

Informations générales

Inhibin is a 32-kD dimeric glycoprotein consisting of an alpha subunit and one of two beta subunits (beta A or beta B) leading to inhibin A or B, respectively, which was isolated and cloned on the basis of its ability to inhibit FSH release from the pituitary. Inhibin beta A forms a disulfide-linked homo-dimer known as activin A, which has been implicated in multiple biologic processes, including neoplastic progression. The inhibin beta A can also bind the beta B and A isoforms to form activin AB and inhibin, respectively.

Publications notables

Autrice	Pubmed ID	Journal	Application
Yongjin Bao	34537472	Theriogenology	WB,IHC
Cai Kailai K	21998670	PLoS One	WB
Xiaoting Li	31827640	Dis Markers	WB, IHC

Stockage

Stockage:

Stocker à -20°C. Stable pendant un an après l'expédition.

Tampon de stockage:

PBS avec azoture de sodium à 0,02 % et glycérol à 50 % pH 7,3

L'aliquotage n'est pas nécessaire pour le stockage à -20C

*** Les 20ul contiennent 0,1% de BSA.

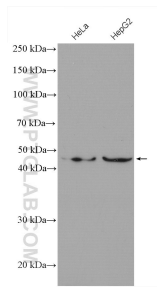
For technical support and original validation data for this product please contact:

T: 1 (888) 4PTGLAB (1-888-478-4522) (toll free in USA), or 1(312) 455-8498 (outside USA)

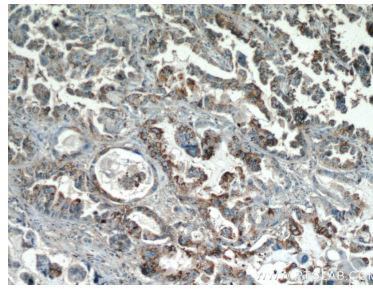
E: proteintech@ptglab.com
W: ptglab.com

This product is exclusively available under Proteintech Group brand and is not available to purchase from any other manufacturer.

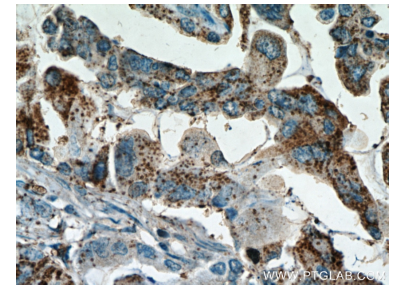
Données de validation sélectionnées



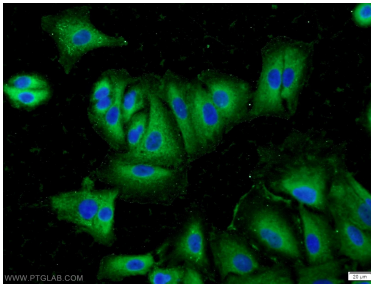
Various lysates were subjected to SDS PAGE followed by western blot with 10651-1-AP (Inhibin beta A antibody) at dilution of 1:600 incubated at room temperature for 1.5 hours.



Immunohistochemical analysis of paraffin-embedded human lung cancer using 10651-1-AP (Inhibin beta A antibody) at dilution of 1:50 (under 10x lens).



Immunohistochemical analysis of paraffin-embedded human lung cancer using 10651-1-AP (Inhibin beta A antibody) at dilution of 1:50 (under 40x lens).



Immunofluorescent analysis of A549 cells using 10651-1-AP (Inhibin beta A antibody) at dilution of 1:50 and Alexa Fluor 488-conjugated AffiniPure Goat Anti-Rabbit IgG(H+L).