

À des fins de recherche uniquement

# Anticorps Polyclonal de lapin anti-FKBP52



Numéro de catalogue: 10655-1-AP

Phare

14 Publications

## Informations de base

Numéro de catalogue:  
10655-1-AP

Taille:  
150ul, Concentration: 800 µg/ml by Nanodrop and 333 µg/ml by Bradford method using BSA as the standard;

Hôte:  
Lapin

Isotype:  
IgG

Immunogen Catalog Number:  
AG1019

Numéro d'acquisition GenBank:  
BC007924

Identification du gène (NCBI):  
2288  
Nom complet:  
FK506 binding protein 4, 59kDa

MW calculé  
59 kDa

MW observés:  
56-59 kDa

Méthode de purification:  
Purification par affinité contre l'antigène

Dilutions recommandées:  
WB 1:1000-1:8000  
IP 0.5-4.0 ug for IP and 1:500-1:2000 for WB  
IHC 1:20-1:200  
IF 1:10-1:100

## Applications

Applications testées:  
FC, IF, IHC, IP, WB, ELISA

Demandes citées:  
IHC, IP, WB

Spécificité de l'espèce:  
Humain, souris

Espèces citées:  
Humain, poulet, souris

**Remarque-IHC: il est suggéré de démasquer l'antigène avec un tampon de TE buffer pH 9.0; (\*) A défaut, le démasquage de l'antigène peut être effectué avec un tampon citrate pH 6,0.**

Contrôles positifs:

WB : cellules HeLa, cellules Jurkat, cellules MCF-7, cellules NIH/3T3, cellules PC-3

IP : cellules HeLa,

IHC : tissu de cancer de la prostate humain,

IF : cellules MCF-7,

## Informations générales

FKBP52 (FK506 binding protein 4) is a member of the immunophilin protein family that comprises intracellular protein effectors of immunosuppressive drugs, and it is known as a steroid receptor-associated protein. As a novel regulator of microtubule dynamics, FKBP52 is associated with the motor protein dynein and with the cytoskeleton during mitosis. FKBP52 is highly expressed in CNS regions susceptible to Alzheimer's, and plays a role in modulating toxicity of Abeta peptides. The protein can associate with the Tau function, and may help to decipher and modulate the events involved in Tau-induced neurodegeneration. In addition, FKBP52 is likely to play a role in growth and development of the male genitalia.

## Publications notables

Autrice	Pubmed ID	Journal	Application
Alain Mangé	31660083	Theranostics	WB
Chun-Yan Wu	27594807	Proteome Sci	WB
Keisuke Maeda	34057812	Mol Oncol	WB IP

## Stockage

Stockage:

Stocker à -20°C. Stable pendant un an après l'expédition.

Tampon de stockage:

PBS avec azoture de sodium à 0,02 % et glycérol à 50 % pH 7,3

L'aliquote n'est pas nécessaire pour le stockage à -20C

\*\*\* Les 20ul contiennent 0,1% de BSA.

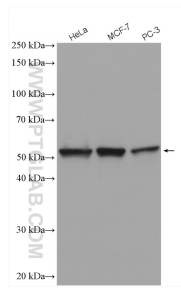
For technical support and original validation data for this product please contact:

T: 1 (888) 4PTGLAB (1-888-478-4522) (toll free in USA), or 1(312) 455-8498 (outside USA)

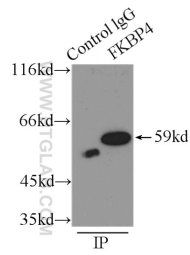
E: proteintech@ptglab.com  
W: ptglab.com

This product is exclusively available under Proteintech Group brand and is not available to purchase from any other manufacturer.

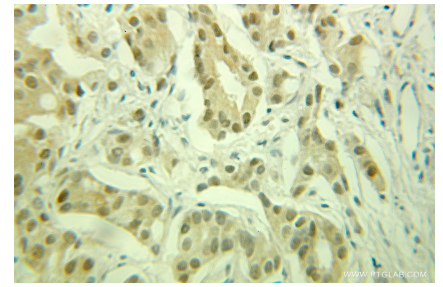
## Données de validation sélectionnées



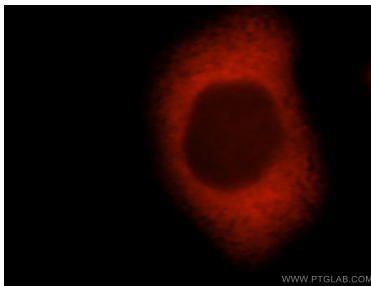
Various lysates were subjected to SDS PAGE followed by western blot with 10655-1-AP (FKBP52 antibody) at dilution of 1:4000 incubated at room temperature for 1.5 hours.



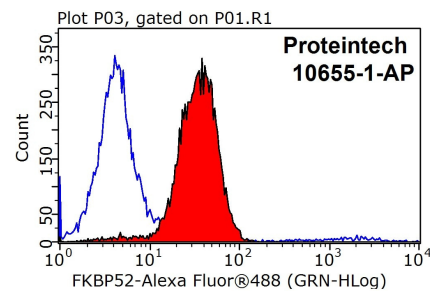
IP Result of anti-FKBP52 (IP:10655-1-AP, 3ug; Detection:10655-1-AP 1:1000) with HeLa cells lysate 3000ug.



Immunohistochemical analysis of paraffin-embedded human prostate cancer using 10655-1-AP (FKBP52 antibody) at dilution of 1:100 (under 25x lens).



Immunofluorescent analysis of MCF-7 cells, using FKBP4 antibody 10655-1-AP at 1:25 dilution and Rhodamine-labeled goat anti-rabbit IgG (red).



1x10<sup>6</sup> MCF-7 cells were stained with 0.2ug FKBP52 antibody (10655-1-AP, red) and control antibody (blue). Fixed with 90% MeOH blocked with 3% BSA (30 min). Alexa Fluor 488-conjugated AffiniPure Goat Anti-Rabbit IgG(H+L) with dilution 1:1000.