

À des fins de recherche uniquement

Anticorps Polyclonal de lapin anti-PMM2



Numéro de catalogue: 10666-1-AP

Phare

8 Publications

Informations de base

Numéro de catalogue:
10666-1-AP

Taille:
150ul, Concentration: 400 µg/ml by Nanodrop and 200 µg/ml by Bradford method using BSA as the standard;

Hôte:
Lapin

Isotype:
IgG

Immunogen Catalog Number:
AG1031

Numéro d'acquisition GenBank:
BC008310

Identification du gène (NCBI):
5373

Nom complet:
phosphomannomutase 2

MW calculé
28 kDa

MW observés:
28-30 kDa

Méthode de purification:
Purification par affinité contre l'antigène

Dilutions recommandées:
WB 1:500-1:2000
IP 0.5-4.0 ug for IP and 1:500-1:2000 for WB
IHC 1:200-1:800
IF 1:20-1:200

Applications

Applications testées:
IF, IHC, IP, WB, ELISA

Demandes citées:
IF, IHC, WB

Spécificité de l'espèce:
Humain, rat, souris

Espèces citées:
Humain, souris

Remarque-IHC: il est suggéré de démasquer l'antigène avec un tampon de TE buffer pH 9,0; (*) A défaut, le démasquage de l'antigène peut être effectué avec un tampon citrate pH 6,0.

Contrôles positifs:

WB : cellules HepG2, multi-tissu

IP : tissu pulmonaire de souris,

IHC : tissu de cancer du sein humain,

IF : cellules HepG2,

Informations générales

PMM2(Phosphomannomutase 2) belongs to the eukaryotic PMM family. It is involved in the synthesis of the GDP-mannose and dolichol-phosphate-mannose required for a number of critical mannosyl transfer reactions. PMM2 catalyzes the second step in the conversion of fructose-6P to GDP-mannose.

Publications notables

Autrice	Pubmed ID	Journal	Application
Giuseppina Andreotti	26488408	PLoS One	WB
Sangeetha Iyer	31636082	Dis Model Mech	WB
Marlen Görlacher	33209585	Mol Genet Metab Rep	WB,IF

Stockage

Stockage:

Stocker à -20°C. Stable pendant un an après l'expédition.

Tampon de stockage:

PBS avec azoture de sodium à 0,02 % et glycérol à 50 % pH 7,3

L'aliquotage n'est pas nécessaire pour le stockage à -20C

*** Les 20ul contiennent 0,1% de BSA.

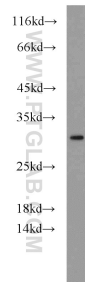
For technical support and original validation data for this product please contact:

T: 1 (888) 4PTGLAB (1-888-478-4522) (toll free in USA), or 1(312) 455-8498 (outside USA)

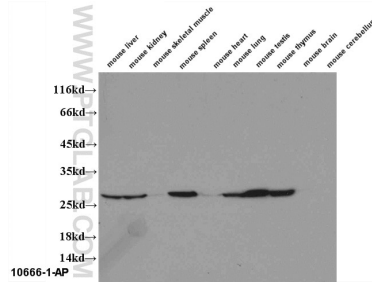
E: proteintech@ptglab.com
W: ptglab.com

This product is exclusively available under Proteintech Group brand and is not available to purchase from any other manufacturer.

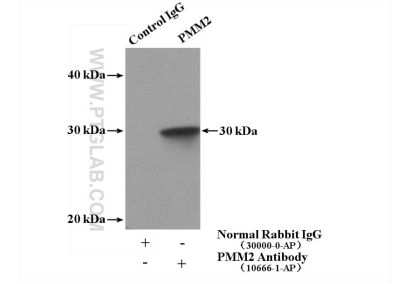
Données de validation sélectionnées



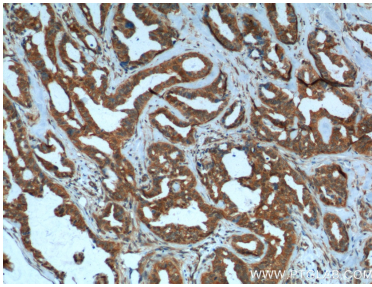
HepG2 cells were subjected to SDS PAGE followed by western blot with 10666-1-AP (PMM2 antibody) at dilution of 1:1000 incubated at room temperature for 1.5 hours.



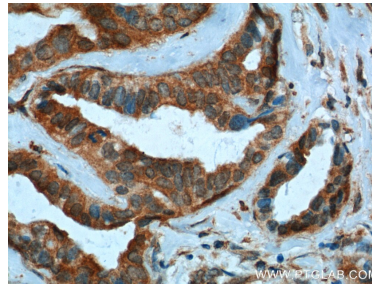
WB results of 10666-1-AP (PMM2 antibody) on several lysates.



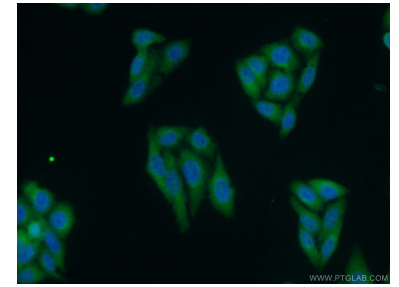
IP Result of anti-PMM2 (IP:10666-1-AP, 4ug; Detection:10666-1-AP 1:1000) with mouse lung tissue lysate 3600ug.



Immunohistochemical analysis of paraffin-embedded human breast cancer tissue slide using 10666-1-AP (PMM2 Antibody) at dilution of 1:400 (under 10x lens). Heat mediated antigen retrieval with Tris-EDTA buffer (pH 9.0).



Immunohistochemical analysis of paraffin-embedded human breast cancer tissue slide using 10666-1-AP (PMM2 Antibody) at dilution of 1:400 (under 40x lens). Heat mediated antigen retrieval with Tris-EDTA buffer (pH 9.0).



Immunofluorescent analysis of HepG2 cells using 10666-1-AP (PMM2 antibody) at dilution of 1:50 and Alexa Fluor 488-conjugated AffiniPure Goat Anti-Rabbit IgG(H+L).