

À des fins de recherche uniquement

# Anticorps Polyclonal de lapin anti-Protein C inhibitor



Numéro de catalogue: 10673-1-AP

4 Publications

## Informations de base

Numéro de catalogue: 10673-1-AP	Numéro d'acquisition GenBank: BC008915	Méthode de purification: Purification par affinité contre l'antigène
Taille: 150ul , Concentration: 200 µg/ml by Nanodrop and 133 µg/ml by Bradford method using BSA as the standard;	Identification du gène (NCBI): 5104	Dilutions recommandées: WB 1:500-1:2000 IHC 1:20-1:200 IF 1:50-1:500
Hôte: Lapin	Nom complet: serpin peptidase inhibitor, clade A (alpha-1 antiproteinase, antitrypsin), member 5	
Isotype: IgG	MW calculé 46 kDa	
Immunogen Catalog Number: AG1078	MW observés: 46 kDa	

## Applications

### Applications testées:

IF, IHC, WB, ELISA

### Demandes citées:

ColP, IHC, WB

### Spécificité de l'espèce:

Humain

### Espèces citées:

Humain, rat

**Remarque-IHC: il est suggéré de démasquer l'antigène avec un tampon de TE buffer pH 9,0; (\*) A défaut, 'le démasquage de l'antigène peut être effectué avec un tampon citrate pH 6,0.**

### Contrôles positifs:

WB : cellules HepG2, cellules A549, cellules HeLa, cellules Jurkat, cellules LO2, cellules PC-3

IHC : tissu de tumeur ovarienne humain, tissu de cancer du sein humain, tissu testiculaire humain

IF : cellules HepG2,

## Informations générales

SERPINA5 (also called Protein C Inhibitor, PCI ) is a serpin type of serine protease inhibitor that is found in many tissues and fluids in human, including blood plasma, seminal plasma and urine. PCI found in blood originates from the liver and is capable of inhibiting several serine proteases involved in the regulation of coagulation and fibrinolysis, including activated protein C, thrombin, factor Xa, various kallikreins and plasminogen activators. PCI has been found to have antimicrobial and antitumor properties and thus appears to be a multi-functional protein.

## Publications notables

Autrice	Pubmed ID	Journal	Application
Tengjiao Zhu	34964303	Proteomics Clin Appl	IHC
Meiyang Fan	36000536	J Cell Mol Med	WB, ColP
Bijsmans Ingrid T G WIT	21102419	Mod Pathol	IHC

## Stockage

### Stockage:

Stocker à -20°C. Stable pendant un an après l'expédition.

### Tampon de stockage:

PBS avec azoture de sodium à 0,02 % et glycérol à 50 % pH 7,3

L'aliquotage n'est pas nécessaire pour le stockage à -20C

\*\*\* Les 20ul contiennent 0,1% de BSA.

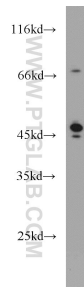
For technical support and original validation data for this product please contact:

T: 1 (888) 4PTGLAB (1-888-478-4522) (toll free in USA), or 1(312) 455-8498 (outside USA)

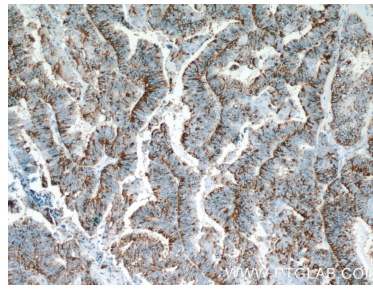
E: proteintech@ptglab.com  
W: ptglab.com

This product is exclusively available under Proteintech Group brand and is not available to purchase from any other manufacturer.

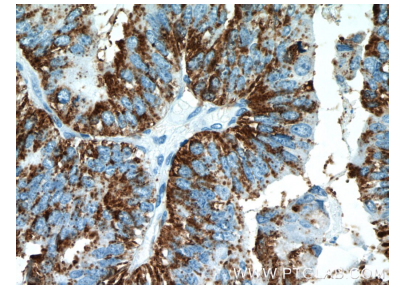
## Données de validation sélectionnées



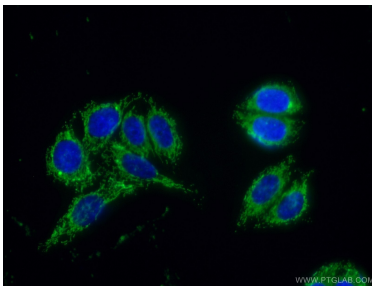
HepG2 cells were subjected to SDS PAGE followed by western blot with 10673-1-AP (Protein C inhibitor antibody) at dilution of 1:1000 incubated at room temperature for 1.5 hours.



Immunohistochemical analysis of paraffin-embedded human ovary tumor tissue slide using 10673-1-AP (Protein C inhibitor antibody) at dilution of 1:50 (under 10x lens).



Immunohistochemical analysis of paraffin-embedded human ovary tumor tissue slide using 10673-1-AP (Protein C inhibitor antibody) at dilution of 1:50 (under 40x lens).



Immunofluorescent analysis of (10% Formaldehyde) fixed HepG2 cells using 10673-1-AP (Protein C inhibitor antibody) at dilution of 1:50 and Alexa Fluor 488-conjugated AffiniPure Goat Anti-Rabbit IgG(H+L).