

À des fins de recherche uniquement

Anticorps Polyclonal de lapin anti-PAIP1



Numéro de catalogue: 10675-1-AP

Phare

5 Publications

Informations de base

Numéro de catalogue:
10675-1-AP

Taille:
150ul, Concentration: 650 µg/ml by Nanodrop and 253 µg/ml by Bradford method using BSA as the standard;

Hôte:
Lapin

Isotype:
IgG

Immunogen Catalog Number:
AG1070

Numéro d'acquisition GenBank:
BC005295

Identification du gène (NCBI):
10605

Nom complet:
poly(A) binding protein interacting protein 1

MW calculé:
70 kDa

MW observés:
60 kDa, 51 kDa, 40 kDa

Méthode de purification:
Purification par affinité contre l'antigène

Dilutions recommandées:
WB 1:500-1:2000
IP 0.5-4.0 ug for IP and 1:200-1:1000 for WB
IF 1:20-1:200

Applications

Applications testées:
IF, IP, WB, ELISA

Demandes citées:
IF, IHC, WB

Spécificité de l'espèce:
Humain, singe

Espèces citées:
Humain

Contrôles positifs:

WB : cellules HeLa, cellules BxPC-3, cellules COS-7

IP : cellules HeLa,

IF : cellules MCF-7,

Informations générales

In initiation of translation in eukaryotes, binding of the small ribosomal subunit to mRNA requires recognition of the 5-prime cap structure by the cap-binding complex eIF4F. eIF4F consists of eIF4E, eIF4A, and eIF4G. Translation initiation is further regulated by the mRNA 3-prime poly(A) tail and the poly(A)-binding protein (PABC1). PAIP1 interacts with PABC1 and some eIF4 complexes [PMID:9548260]. It is a coactivator in the regulation of translation initiation of poly(A)-containing mRNAs, and associates with EIF4A and PABPC1 may potentiate contacts between mRNA termini [PMID:11051545].

Publications notables

Autrice	Pubmed ID	Journal	Application
Emma Jane Mead	26420881	Biochem J	WB
Yue He	30295753	Biol Reprod	WB, IHC, IF
Yixuan Wang	30496797	Hum Pathol	WB, IHC

Stockage

Stockage:

Stocker à -20°C. Stable pendant un an après l'expédition.

Tampon de stockage:

PBS avec azoture de sodium à 0,02 % et glycérol à 50 % pH 7,3

L'aliquotage n'est pas nécessaire pour le stockage à -20C

*** Les 20ul contiennent 0,1% de BSA.

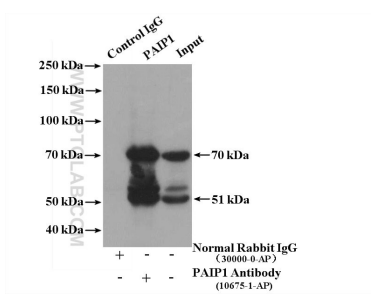
For technical support and original validation data for this product please contact:

T: 1 (888) 4PTGLAB (1-888-478-4522) (toll free in USA), or 1(312) 455-8498 (outside USA)

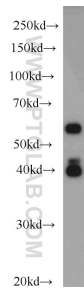
E: proteintech@ptglab.com
W: ptglab.com

This product is exclusively available under Proteintech Group brand and is not available to purchase from any other manufacturer.

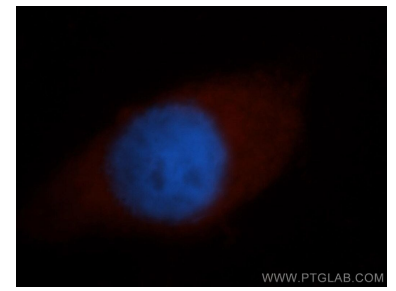
Données de validation sélectionnées



IP result of anti-PAIP1 (IP:10675-1-AP, 4 μ g; Detection:10675-1-AP 1:300) with HeLa cells lysate 3000 μ g.



HeLa cells were subjected to SDS PAGE followed by western blot with 10675-1-AP (PAIP1 antibody) at dilution of 1:1000 incubated at room temperature for 1.5 hours.



Immunofluorescent analysis of MCF-7 cells, using PAIP1 antibody 10675-1-AP at 1:50 dilution and Rhodamine-labeled goat anti-rabbit IgG (red). Blue pseudocolor = DAPI (fluorescent DNA dye).