

À des fins de recherche uniquement

# Anticorps Polyclonal de lapin anti-Lumican



Numéro de catalogue: 10677-1-AP

3 Publications

## Informations de base

Numéro de catalogue:  
10677-1-AP

Taille:  
150ul, Concentration: 260 µg/ml by Nanodrop and 153 µg/ml by Bradford method using BSA as the standard;

Hôte:  
Lapin

Isotype:  
IgG

Immunogen Catalog Number:  
AG1106

Numéro d'acquisition GenBank:  
BC007038

Identification du gène (NCBI):  
4060

Nom complet:  
lumican

MW calculé  
38 kDa

MW observés:  
65-90 kDa

Méthode de purification:  
Purification par affinité contre l'antigène

Dilutions recommandées:  
WB 1:500-1:1000  
IF 1:200-1:800

## Applications

Applications testées:  
IF, WB, ELISA

Demandes citées:  
WB

Spécificité de l'espèce:  
Humain, rat, souris

Espèces citées:  
Humain, rat

Contrôles positifs:

WB : cellules Jurkat,

IF : tissu de côlon humain,

## Informations générales

Lumican (LUM), a member of the small leucine-rich proteoglycan (SLRP) family, is one of the major extracellular components in interstitial collagenous matrices of the corneal stroma, aorta, skin, skeletal muscle, lung, kidney, bone, cartilage, and intervertebral discs. SLRPs constitute an important fraction of noncollagenous extracellular matrix proteins and have important effects on cell behavior. Lumican regulates collagenous matrix assembly as a keratan sulfate proteoglycan in the cornea and may exist as a glycoprotein in the connective tissues of other organs. Posttranslational modifications lumican goes through can increase its apparent molecular weight to 50-90 kDa. Studies show that lumican participates in the maintenance of tissue homeostasis and modulates cellular functions including cell proliferation, migration, and differentiation. (PMID: 18949819; 22252641; 9761754; 22365843)

## Publications notables

Autrice	Pubmed ID	Journal	Application
Huafeng Song	35300115	Front Mol Biosci	WB
He Wang	30556904	J Cell Physiol	WB
Clement Cristina C CC	23202415	J Proteomics	WB

## Stockage

Stockage:

Stocker à -20°C. Stable pendant un an après l'expédition.

Tampon de stockage:

PBS avec azoture de sodium à 0,02 % et glycérol à 50 % pH 7,3

L'aliquotage n'est pas nécessaire pour le stockage à -20C

\*\*\* Les 20ul contiennent 0,1% de BSA.

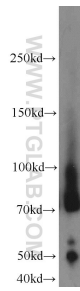
For technical support and original validation data for this product please contact:

T: 1 (888) 4PTGLAB (1-888-478-4522) (toll free in USA), or 1(312) 455-8498 (outside USA)

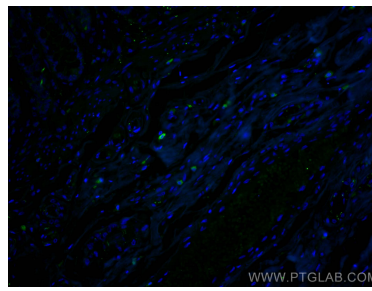
E: [proteintech@ptglab.com](mailto:proteintech@ptglab.com)  
W: [ptglab.com](http://ptglab.com)

This product is exclusively available under Proteintech Group brand and is not available to purchase from any other manufacturer.

## Données de validation sélectionnées



Jurkat cells were subjected to SDS PAGE followed by western blot with 10677-1-AP (Lumican antibody) at dilution of 1:800 incubated at room temperature for 1.5 hours.



Immunofluorescent analysis of (4% PFA) fixed human colon tissue using Lumican antibody (10677-1-AP) at dilution of 1:400 and CoraLite®488-Conjugated AffiniPure Goat Anti-Rabbit IgG(H+L).