

À des fins de recherche uniquement

Anticorps Polyclonal de lapin anti-KLK3/PSA



Numéro de catalogue: 10679-1-AP

17 Publications

Informations de base

Numéro de catalogue:	10679-1-AP	Numéro d'acquisition GenBank:	BC005307	Méthode de purification:	Purification par affinité contre l'antigène
Taille:	150ul, Concentration: 700 µg/ml by Nanodrop;	Identification du gène (NCBI):	354	Dilutions recommandées:	WB 1:1000-1:8000 IHC 1:100-1:400
Hôte:	Lapin	Nom complet:	kallikrein-related peptidase 3		
Isotype:	IgG	MW calculé:	29 kDa		
Immunogen Catalog Number:	AG1060	MW observés:	30-34 kDa		

Applications

Applications testées:	IHC, WB, ELISA	Contrôles positifs:	WB : cellules LNCaP, cellules HEK-293 transfectées IHC : tissu de cancer de la prostate humain,
Demandes citées:	IF, IHC, WB		
Spécificité de l'espèce:	Humain		
Espèces citées:	Humain, rat, souris		

Remarque-IHC: il est suggéré de démasquer l'antigène avec un tampon de TE buffer pH 9,0; (*) À défaut, le démasquage de l'antigène peut être effectué avec un tampon citrate pH 6,0.

Informations générales

Kallikreins are a subgroup of serine proteases having diverse physiological functions. Growing evidence suggests that many kallikreins are implicated in carcinogenesis and some have potential as novel cancer and other disease biomarkers. kallikrein-related peptidase 3, which is also called PSA (prostate-specific antigen) in the clinical setting, is useful in the diagnosis and monitoring of prostatic carcinoma. KLK3 has 5 isoforms produced by alternative splicing.

Publications notables

Autrice	Pubmed ID	Journal	Application
Yalcin Erzurumlu	36445513	Mol Biol Rep	WB
Yalan Xu	36434710	Stem Cell Res Ther	IHC,IF
Hui Ma	31127646	J Cell Biochem	IHC

Stockage

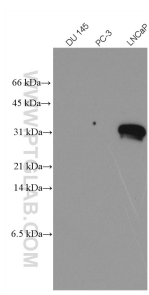
Stockage:
Stocker à -20°C. Stable pendant un an après l'expédition.
Tampon de stockage:
PBS avec azoture de sodium à 0,02 % et glycérol à 50 % pH 7,3
L'aliquotage n'est pas nécessaire pour le stockage à -20C

*** Les 20ul contiennent 0,1% de BSA.

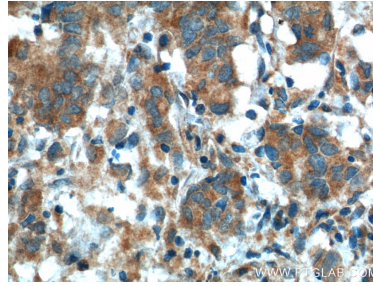
For technical support and original validation data for this product please contact:
T: 1 (888) 4PTGLAB (1-888-478-4522) (toll free in USA), or 1(312) 455-8498 (outside USA)
E: proteintech@ptglab.com
W: ptglab.com

This product is exclusively available under Proteintech Group brand and is not available to purchase from any other manufacturer.

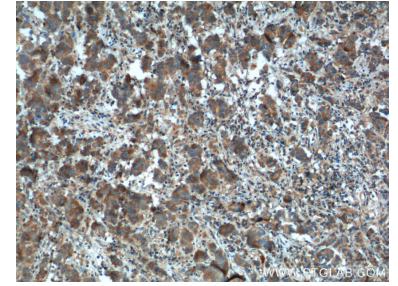
Données de validation sélectionnées



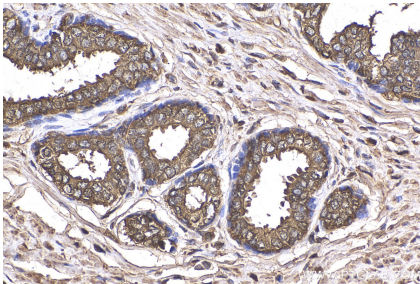
DU 145(PSA-), PC-3(PSA-) and LNCaP (PSA+) cell lysates were subjected to SDS PAGE followed by western blot with 10679-1-AP (KLK3/PSA antibody) at dilution of 1:4000 incubated at room temperature for 1.5 hours.



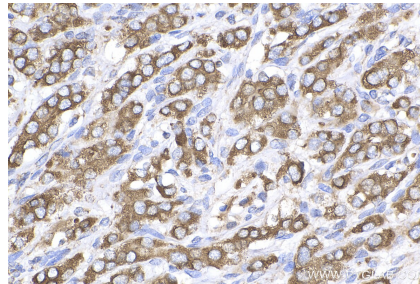
Immunohistochemical analysis of paraffin-embedded human prostate cancer tissue slide using 10679-1-AP (KLK3/PSA antibody) at dilution of 1:200 (under 40x lens). Heat mediated antigen retrieval with Tris-EDTA buffer (pH 9.0).



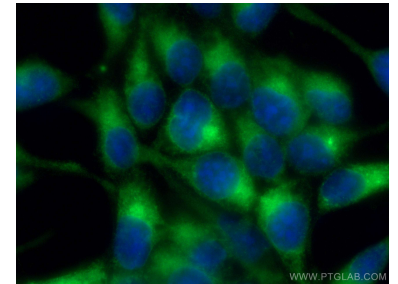
Immunohistochemical analysis of paraffin-embedded human prostate cancer tissue slide using 10679-1-AP (KLK3/PSA antibody) at dilution of 1:200 (under 10x lens). Heat mediated antigen retrieval with Tris-EDTA buffer (pH 9.0).



Immunohistochemical analysis of paraffin-embedded human prostate cancer tissue slide using 10679-1-AP (KLK3/PSA antibody) at dilution of 1:500 (under 40x lens). Heat mediated antigen retrieval with Tris-EDTA buffer (pH 9.0).



Immunohistochemical analysis of paraffin-embedded human prostate cancer tissue slide using 10679-1-AP (KLK3/PSA antibody) at dilution of 1:500 (under 40x lens). Heat mediated antigen retrieval with Tris-EDTA buffer (pH 9.0).



Immunofluorescent analysis of (-20°C Methanol) fixed LNCaP cells using KLK3/PSA antibody (10679-1-AP) at dilution of 1:200 and CoraLite®488-Conjugated AffiniPure Goat Anti-Rabbit IgG(H+L).